

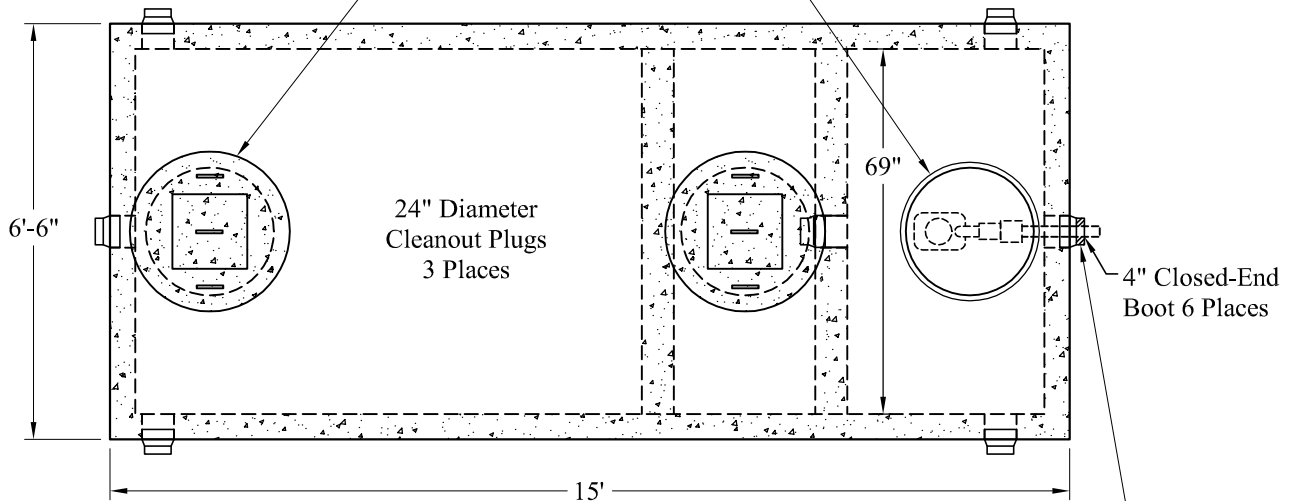
1-800-639-2199

Fax (603) 224-2927

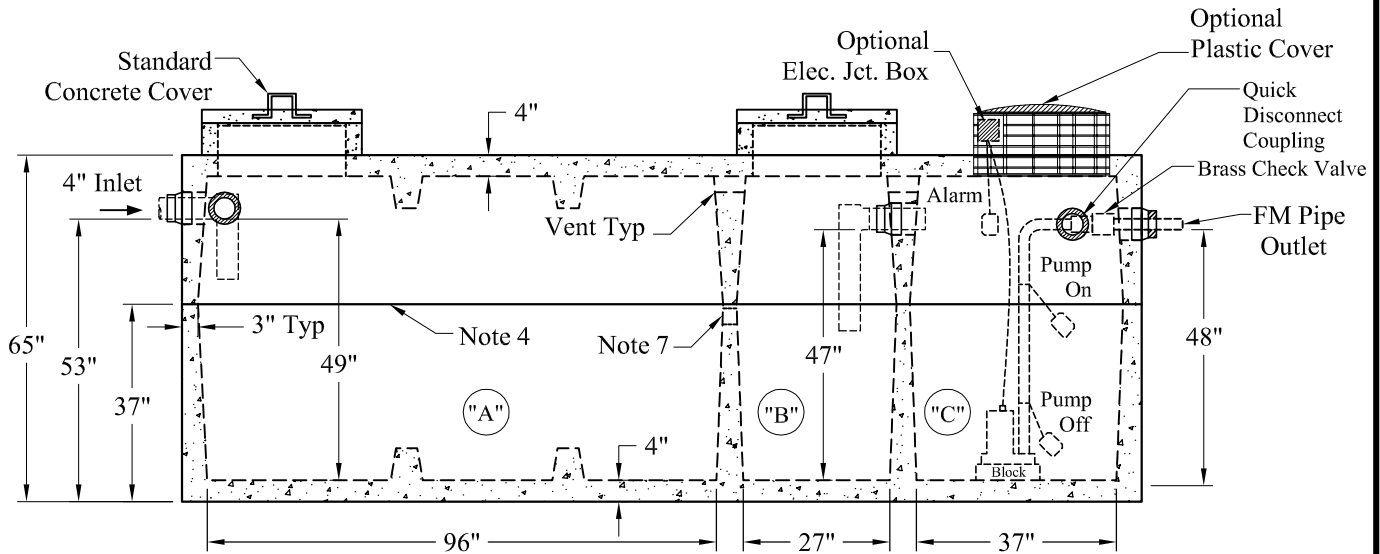
Tanks\Compartment3 Comp\Med_LD_3_Comp_Pump Tank Sales

Standard Cover Configuration
Is (3) 24" Dia Concrete Covers

Optional Cover Configuration
Is (3) 24" Dia Plastic Risers
Cast In, With Plastic Covers



NOTE: A Pipe Bushing Will Be Required
On All Boots with Pipes Less Than 4"



Pumps and Related Accessories are Optional.
Junction Box And Electrical Connections
Installed By Others

General Notes

1. Steel Reinforcement Conforms to Latest ASTM Specifications: ASTM-A615 Grade 60 Rebar
2. Concrete: $f_c = 4,000$ psi @ 28 Days Minimum
3. Flexible Sleeves Used On All Pipe Openings
4. Butyl Rubber Joint Sealant Provided
5. Internal PVC Baffles Available
- Inlet: Shall Penetrate at Least 9" Below the Liquid Level, But Not Deeper Than the Outlet Baffle.
- Outlet: Shall Extend Below the Surface of the Liquid Equal to 40% of the Liquid Depth (19").
6. "A" Liquid Level = 355 Gals/VF (30 Gals/In) "A" = 1,391 Gals
 "B" Liquid Level = 105 Gals/VF (9 Gals/In) "B" = 411 Gals
 "C" Liquid Level = 143 Gals/VF (12 Gals/In) "C" = 548 Gals
 Total = 2,350 Gals
7. Flow-Through Opening Between Compartments A & B
8. LD Tanks: 3' Cover Max, Non-Traffic

Elevations:	
Rim:	
Invert In:	
Alarm On:	
Pump On:	
Pump Off:	
Inside Floor:	

Est Weight:
Upper: 10,270 Lbs
Lower: 12,500 Lbs
Total: 22,770 Lbs

Phoenix
Precast
Products

Medium LD
3 Compartment
Pump Tank

P/N:

Phoenix Precast Products

Phoenix Precast Products