

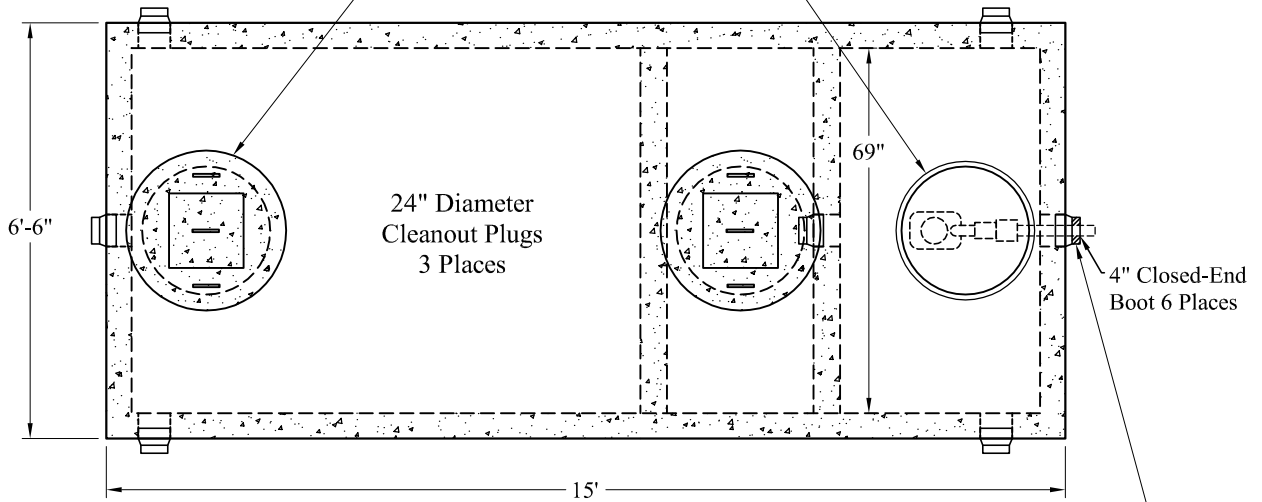
1-800-639-2199

Fax (603) 224-2927

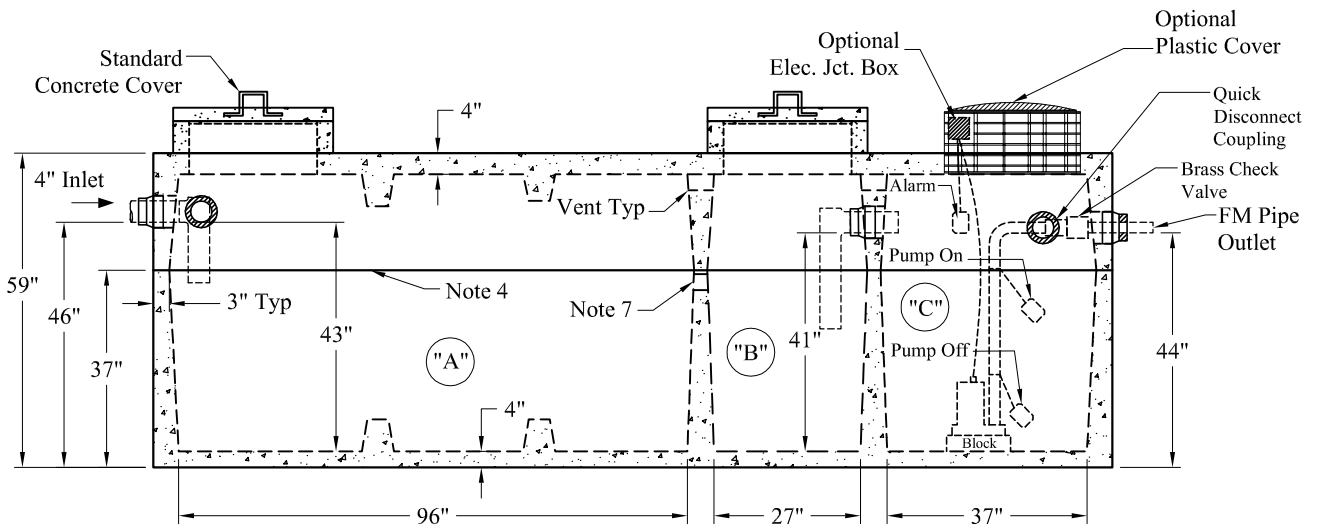
Tanks\Compartment\3 Comp\Small HD 3\_Comp\_Tank

Standard Cover Configuration  
Is (3) 24" Dia Concrete Covers

Optional Cover Configuration  
Is (3) 24" Dia Plastic Risers  
Cast In, With Plastic Covers



NOTE: A Pipe Bushing Will Be Required  
On All Boots with Pipes Less Than 4"



Pumps and Related Accessories are Optional.  
Junction Box And Electrical Connections  
Installed By Others

**General Notes**

- Steel Reinforcement Conforms to Latest ASTM Specifications: ASTM-A615 Grade 60 Rebar
  - Concrete:  $f_c = 4,000$  psi @ 28 Days Minimum
  - Flexible Sleeves Used On All Pipe Openings
  - Butyl Rubber Joint Sealant Provided
  - Internal PVC Baffles Available
- Inlet: Shall Penetrate at Least 9" Below the Liquid Level, But Not Deeper Than the Outlet Baffle.  
Outlet: Shall Extend Below the Surface of the Liquid Equal to 40% of the Liquid Depth (17").
6. "A" Liquid Level = 355 Gals/VF (30 Gals/In) "A" = 1,214 Gals  
"B" Liquid Level = 105 Gals/VF (9 Gals/In) "B" = 359 Gals  
"C" Liquid Level = 143 Gals/VF (12 Gals/In) "C" = 476 Gals  
Total = 2,049 Gals
- Flow-Through Opening Between Compartments A & B
  - HD Tanks: 3' -6' Cover Max, Non-Traffic

**Elevations:**

Rim:	
Invert In:	
Alarm On:	
Pump On:	
Pump Off:	
Inside Floor:	

Est Weight:

Top: 9,750 Lbs

Base: 12,500 Lbs

Total: 22,250 Lbs

Phoenix  
Precast  
Products

Small HD  
3 Compartment  
Pump Tank

P/N:

Phoenix Precast Products

Phoenix Precast Products