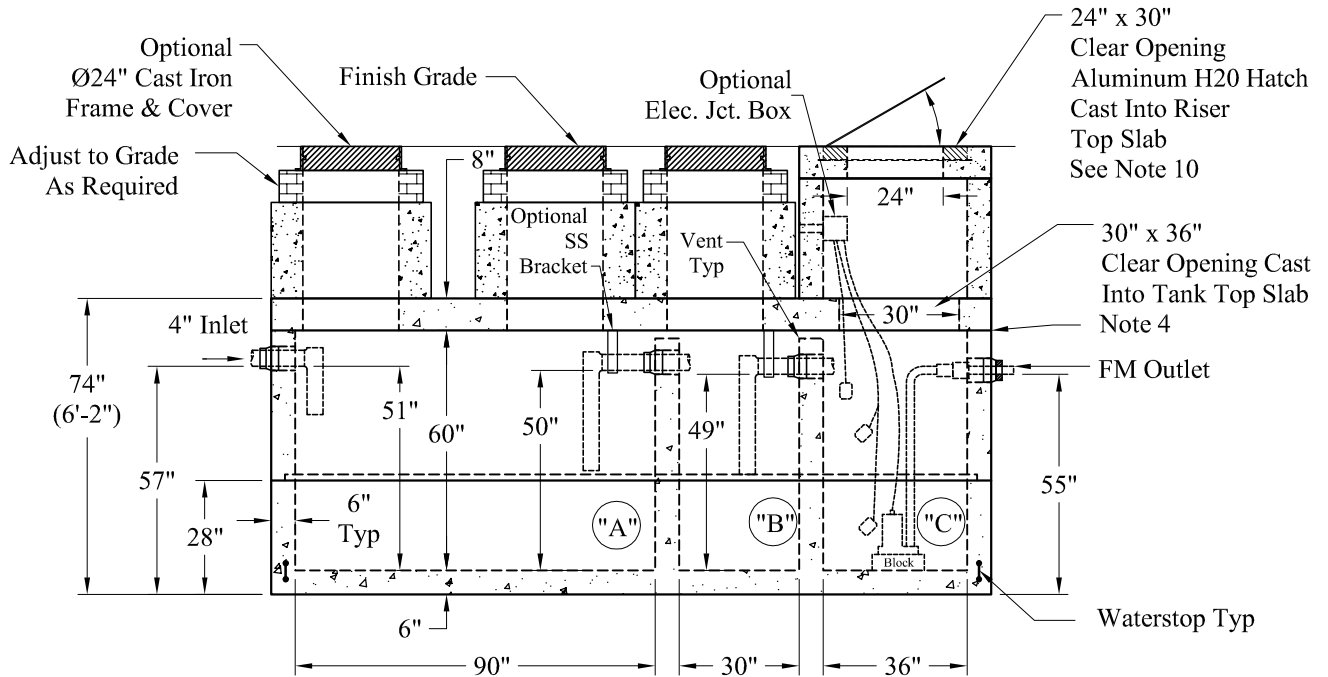


NOTE: A Pipe Bushing Will Be Required on all Boots with Pipes Less Than 4"



General Notes:

1. Steel Reinforcement Conforms to Latest ASTM Specifications: ASTM-A615 Grade 60 Rebar
2. Concrete: $f_c = 5,000$ psi @ 28 Days Minimum
3. Flexible Sleeves Provided On All Pipe Connections
4. Butyl Rubber Joint Sealant Provided
5. Internal PVC Baffles Available Upon Request
- Inlet: Shall Penetrate at Least 9" Below the Liquid Level, But Not Deeper Than the Outlet Baffle.
- Outlet: Shall Extend Below the Surface of the Liquid Equal to 40% of the Liquid Depth. (19")
6. Design Loading: AASHTO-HS20-44, ASTM C-890-06
7. Design Specified As: ASTM C-1227-08, ASTM C-913-08
8. Other Inlet/Outlet Pipe Sizes Available
9. "A" Liquid Levels: = 337 Gals/VF (28 Gals/In)
 "B" Liquid Levels: = 112 Gals/VF (9 Gals/In)
 "C" Liquid Levels: = 135 Gals/VF (11 Gals/In)
 4": "A" = 1,432 Gallons 6": "A" = 1,405 Gallons
 "B" = 457 Gallons "B" = 448 Gallons
 "C" = 540 Gallons "C" = 529 Gallons
10. Larger Hatch Sizes Are Available

Pumps and Related Accessories are Optional. Junction Box And Electrical Connections Installed By Others

Est Weights:

Top Slab -	10,375 Lbs
3' Riser -	12,000 Lbs
Base -	15,575 Lbs
Total:	38,150 Lbs

Elevations:	
Rim:	
Invert In:	
Alarm On:	
Pump On:	
Pump Off:	
Inside Floor:	

<p>Phoenix Precast Products</p>	<p>1,430 / 450 / 500 Gallon 3 Compartment HS-20 Duplex Pump Tank</p>