

1-800-639-2199

Fax (603) 224-2927

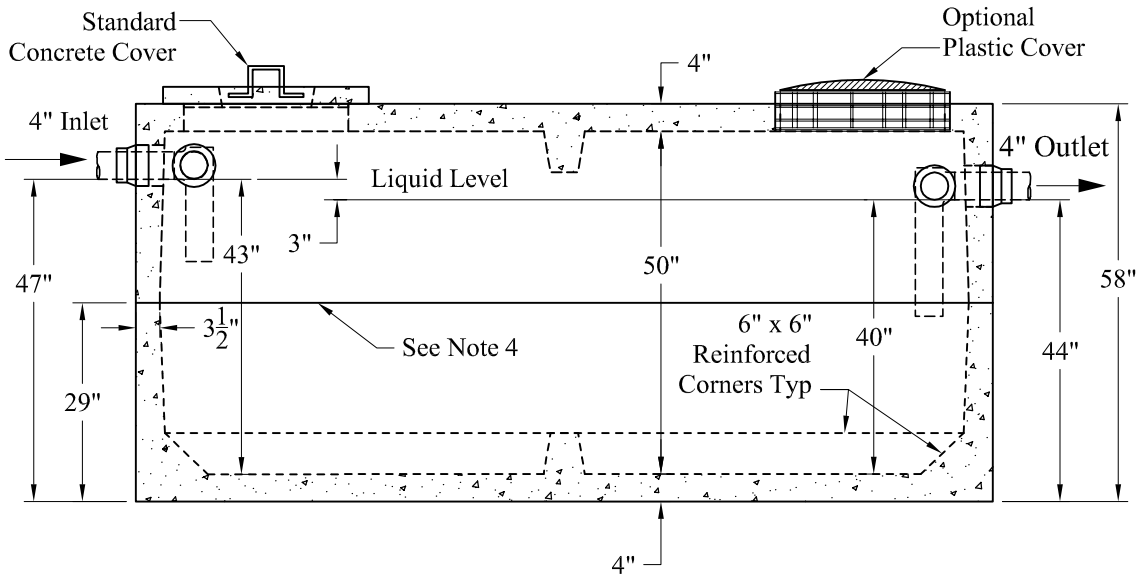
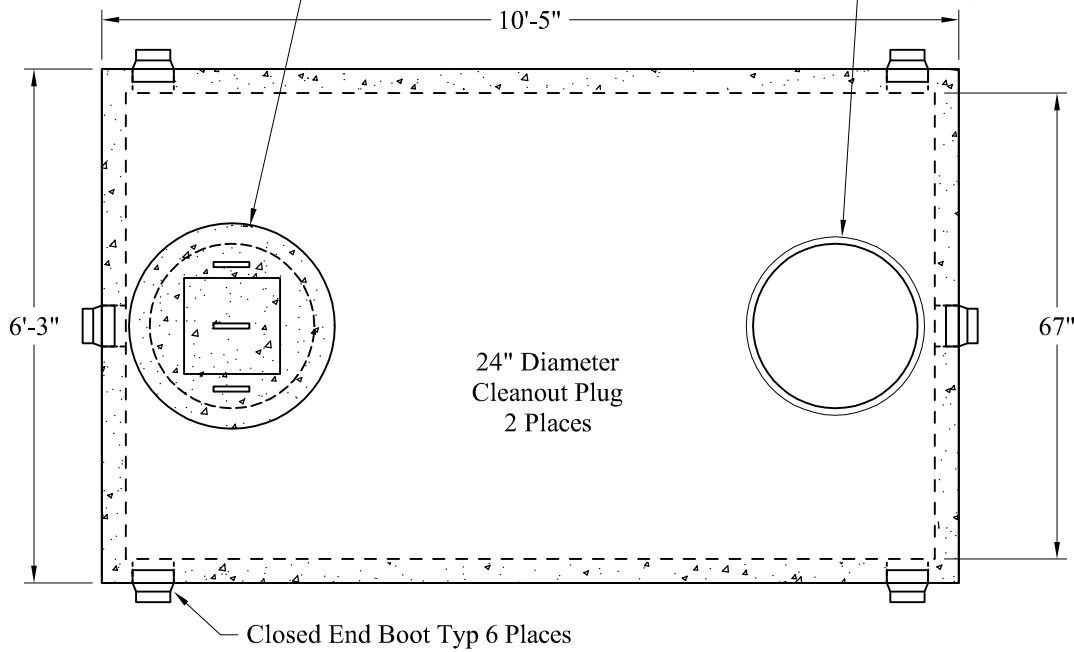
Tanks\Standard\1,250 Gal\1250 Gal HD Short Septic Tank

Phoenix Precast Products

Phoenix Precast Products

Standard Cover Configuration  
Is (2) 24" Dia Concrete Covers

Optional Cover Configuration  
Is (2) 24" Dia Plastic Risers  
Cast In, With Plastic Covers



**General Notes**

1. Steel Reinforcement Conforms to Latest ASTM Specifications: ASTM-A615 Grade 60 Rebar
  2. Concrete: fc = 4,000 psi @ 28 Days Minimum
  3. Flexible Sleeves Used On All Pipe Openings
  4. Butyl Rubber Joint Sealant Provided
  5. Internal PVC Baffles Available
- Inlet: Shall Penetrate at Least 9" Below the Liquid Level, But Not Deeper Than the Outlet Baffle.
- Outlet: Shall Extend Below the Surface of the Liquid Equal to 40% of the Liquid Depth (16").
6. HD Tanks: 3' -6' Cover Max, Non-Traffic

**Est Weight:**

Upper: 5,710 Lbs  
Lower: 6,570 Lbs  
Total: 12,280 Lbs

Phoenix  
Precast  
Products

1250 Gallon  
Heavy Duty  
Septic Tank (Short)

P/N: ST-1250SHD