

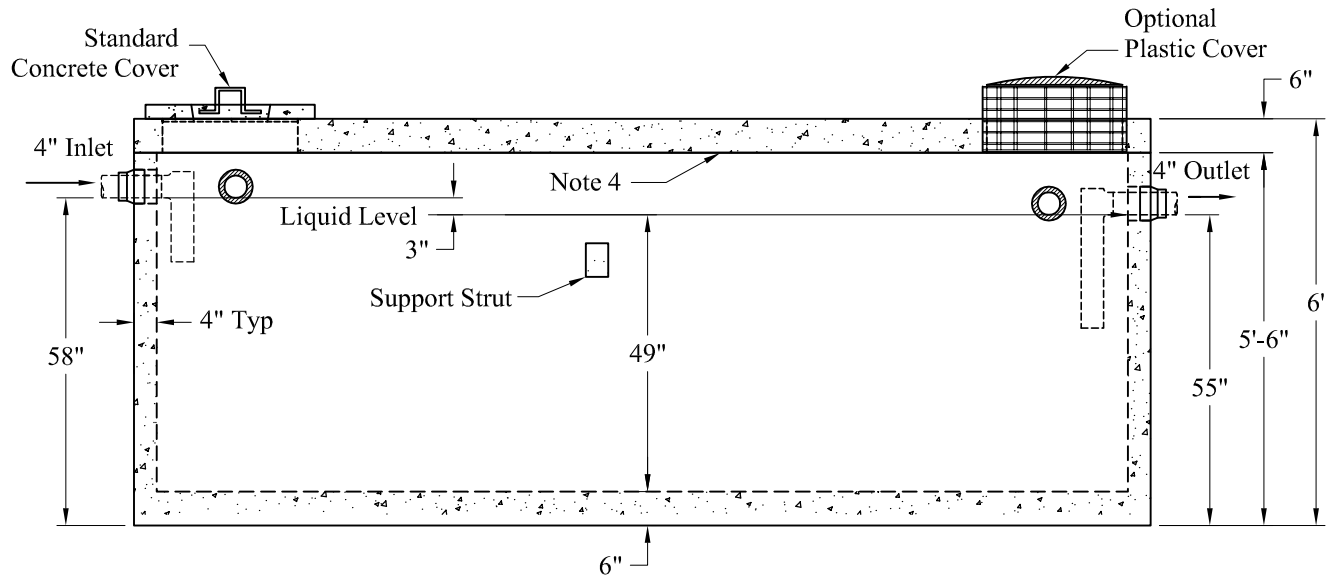
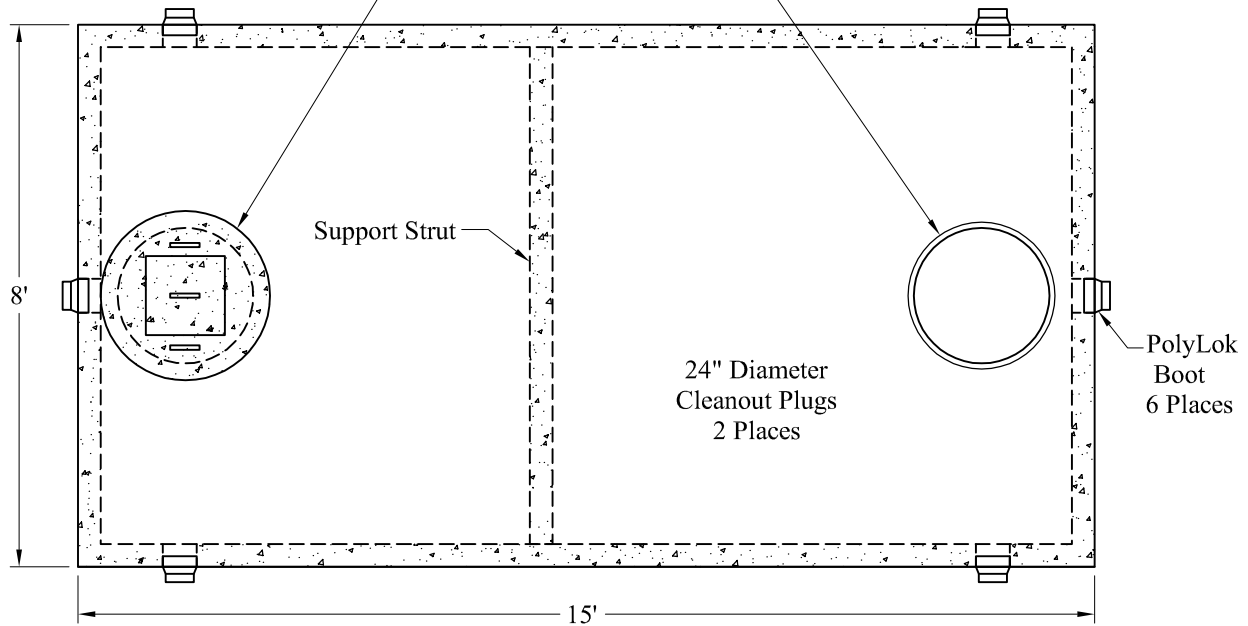
1-800-639-2199

Fax (603) 224-2927

Tanks\Standard\3000 Gal\HD Top Seam Septic Tank

Standard Cover Configuration  
Is (2) 24" Dia Concrete Covers

Optional Cover Configuration  
Is (2) 24" Dia Plastic Risers  
Cast In, With Plastic Covers



**General Notes**

1. Steel Reinforcement Conforms to Latest ASTM Specifications: ASTM-A615 Grade 60 Rebar
2. Concrete:  $f_c = 4,000$  psi @ 28 Days Minimum
3. Flexible Sleeves Used On All Pipe Openings
4. Butyl Rubber Joint Sealant Provided
5. Internal PVC Baffles Available
- Inlet: Shall Penetrate at Least 9" Below the Liquid Level, But Not Deeper Than the Outlet Baffle.
- Outlet: Shall Extend Below the Surface of the Liquid Equal to 40% of the Liquid Depth (20").
6. HD Tanks: 3' - 6' Cover Max, Non-Traffic

Est Weights:  
 Top Slab: 8,500 Lbs  
 Base: 20,000 Lbs  
 Total: 28,500 Lbs

Phoenix  
Precast  
Products

3,000 Gallon  
Top Seam  
HD Septic Tank

P/N: MST-3000RHD

Phoenix Precast Products

Phoenix Precast Products