

1-800-639-2199

Fax (603) 224-2927

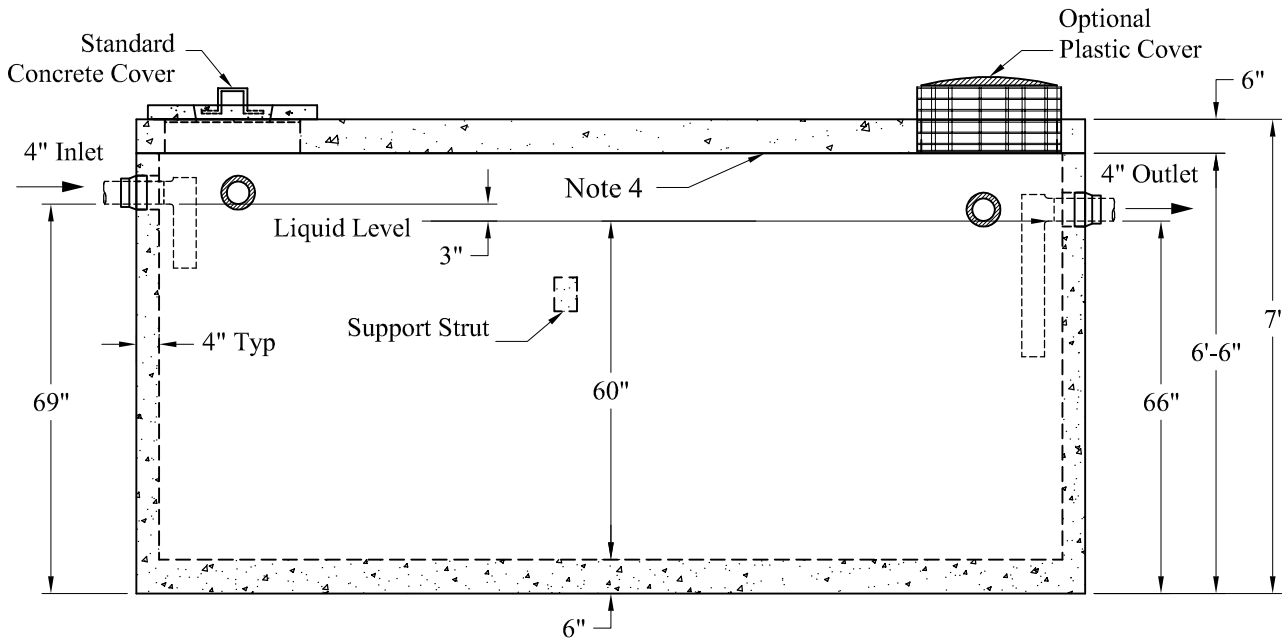
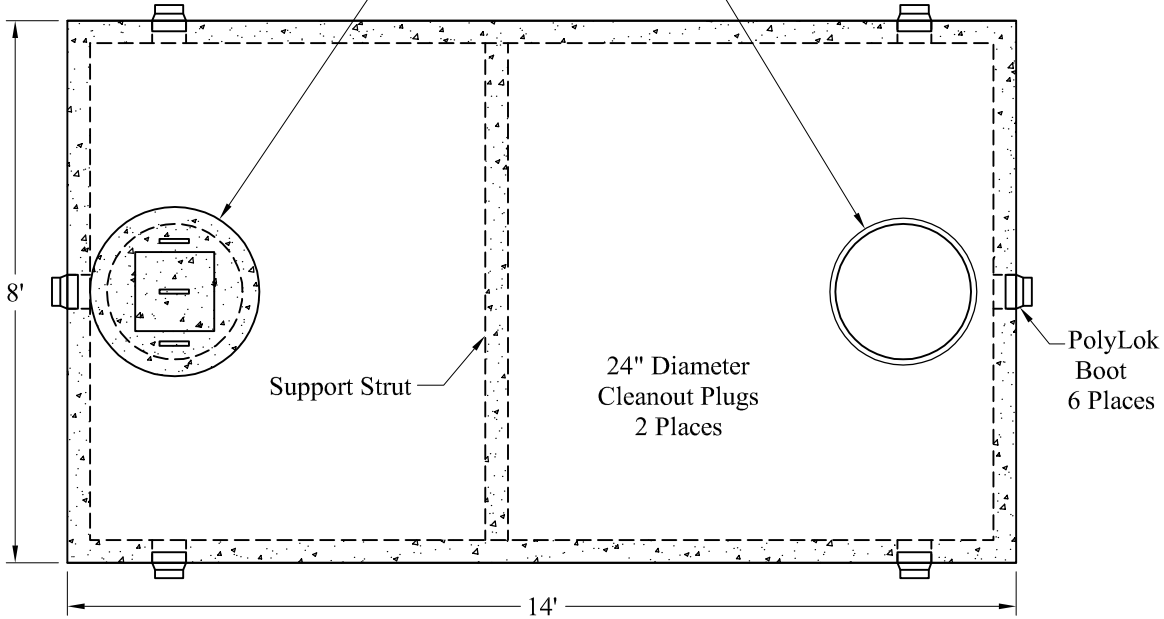
Tanks Standard 3500 Gal HD Top Seam Septic Tank

Phoenix Precast Products

Phoenix Precast Products

Standard Cover Configuration
Is (2) 24" Dia Concrete Covers

Optional Cover Configuration
Is (2) 24" Dia Plastic Risers
Cast In, With Plastic Covers



General Notes

1. Steel Reinforcement Conforms to Latest ASTM Specifications: ASTM-A615 Grade 60 Rebar
2. Concrete: $f_c = 4,000$ psi @ 28 Days Minimum
3. Flexible Sleeves Used On All Pipe Openings
4. Butyl Rubber Joint Sealant Provided
5. Internal PVC Baffles Available
- Inlet: Shall Penetrate at Least 9" Below the Liquid Level, But Not Deeper Than the Outlet Baffle.
- Outlet: Shall Extend Below the Surface of the Liquid Equal to 40% of the Liquid Depth (24").
6. HD Tanks: 3' - 6' Cover Max, Non-Traffic

Est Weights:

Top Slab:	7,850 Lbs
Base:	20,970 Lbs
Total:	28,820 Lbs

Phoenix
Precast
Products

3,500 Gallon
Top Seam
HD Septic Tank

P/N: MST-3500RHD

Concord, NH 03301