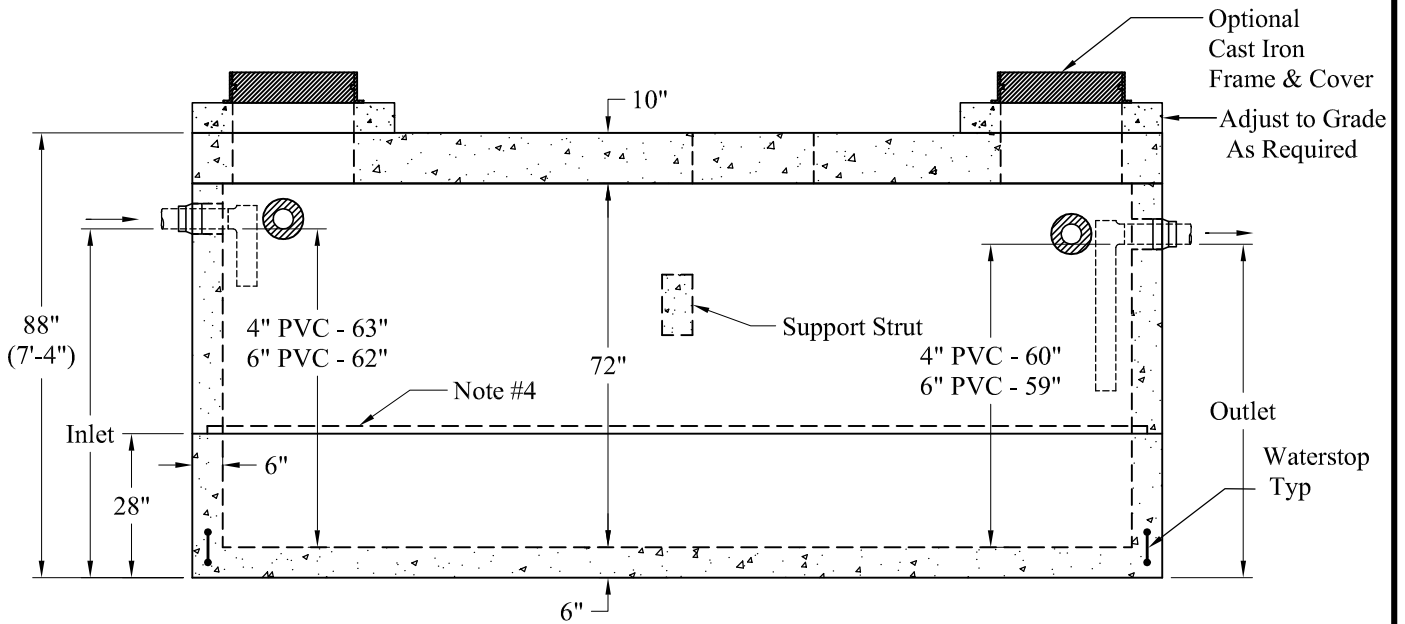
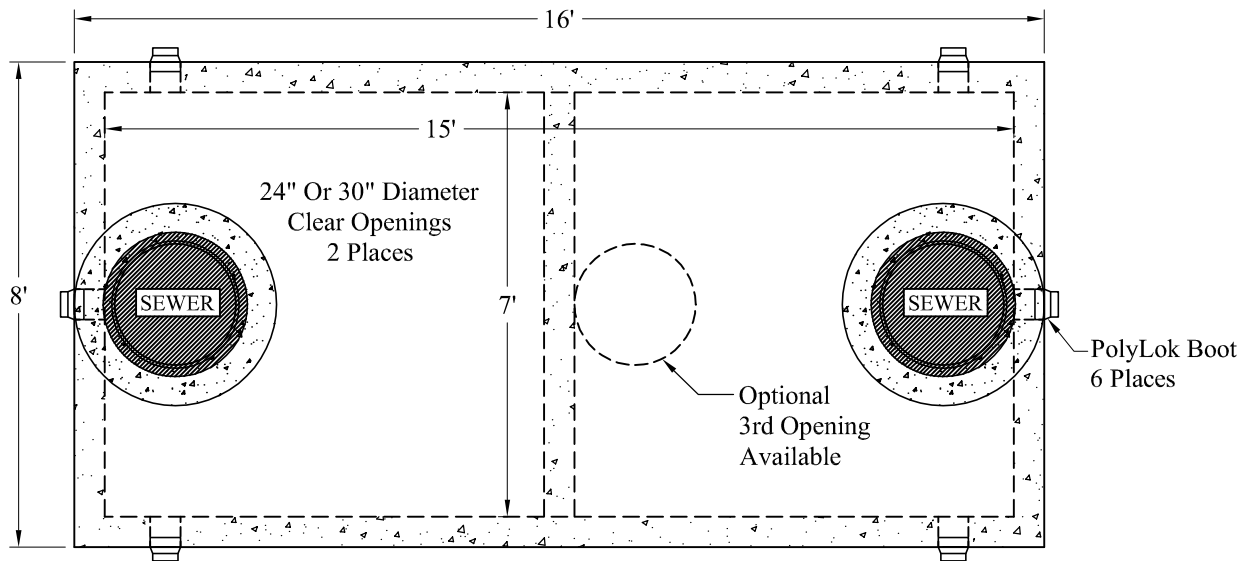


1-800-639-2199

Fax (603) 224-2927

Tanks/Standard/3,500\_Gal\_H2O/3500 Gallon H2O Tank Sales



**Liquid Levels: 7' x 15' = 787 Gals/VF**  
 4" PVC = 3,935 Gals Inverts: Inlet-69" Outlet-66"  
 6" PVC = 3,872 Gals Inverts: Inlet-68" Outlet-65"

General Notes:

1. Steel Reinforcement Conforms to Latest ASTM Specifications: ASTM-A615 Grade 60 Rebar
2. Concrete:  $f_c = 5,000$  psi @ 28 Days Minimum
3. Flexible Sleeves Provided On All Pipe Connections
4. Butyl Rubber Joint Sealant Provided
5. Internal PVC Baffles Available Upon Request
- Inlet: Shall Penetrate at Least 9" Below the Liquid Level, But Not Deeper Than the Outlet Baffle.
- Outlet: Shall Extend Below the Surface of the Liquid Equal to 40% of the Liquid Depth (24").
6. Design Loading: AASHTO-HS20-44, ASTM C-890-06
7. Design Specified As: ASTM C-1227-08, ASTM C-913-08
8. Other Inlet/Outlet Pipe Sizes Available

Est. Weights:  
 Top Slab - 15,050 Lbs  
 4' Riser - 14,200 Lbs  
 Base - 16,300 Lbs  
 Total: 45,550 Lbs

Phoenix  
Precast  
Products

3500 Gallon  
H-20 Tank

P/N: ST-3500H20

Phoenix Precast Products

Phoenix Precast Products