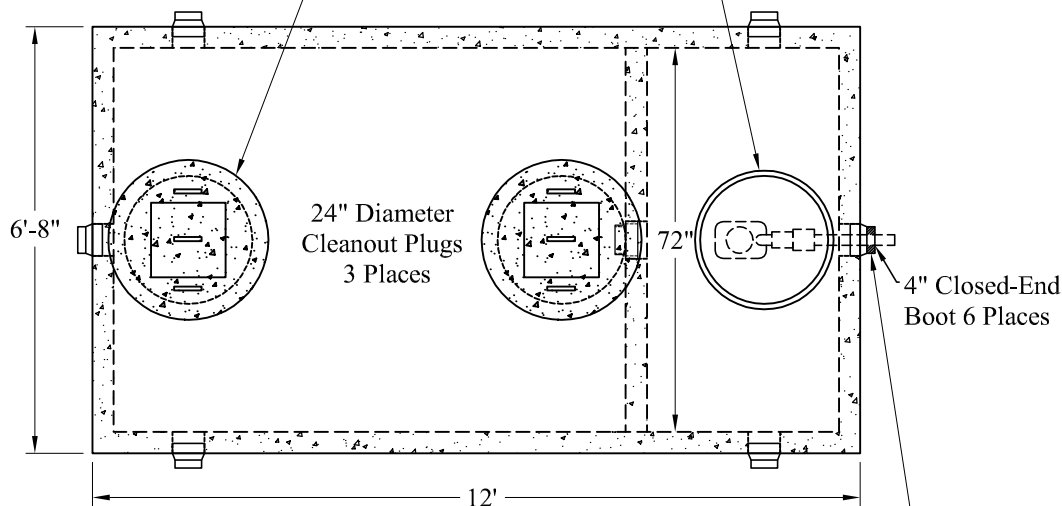
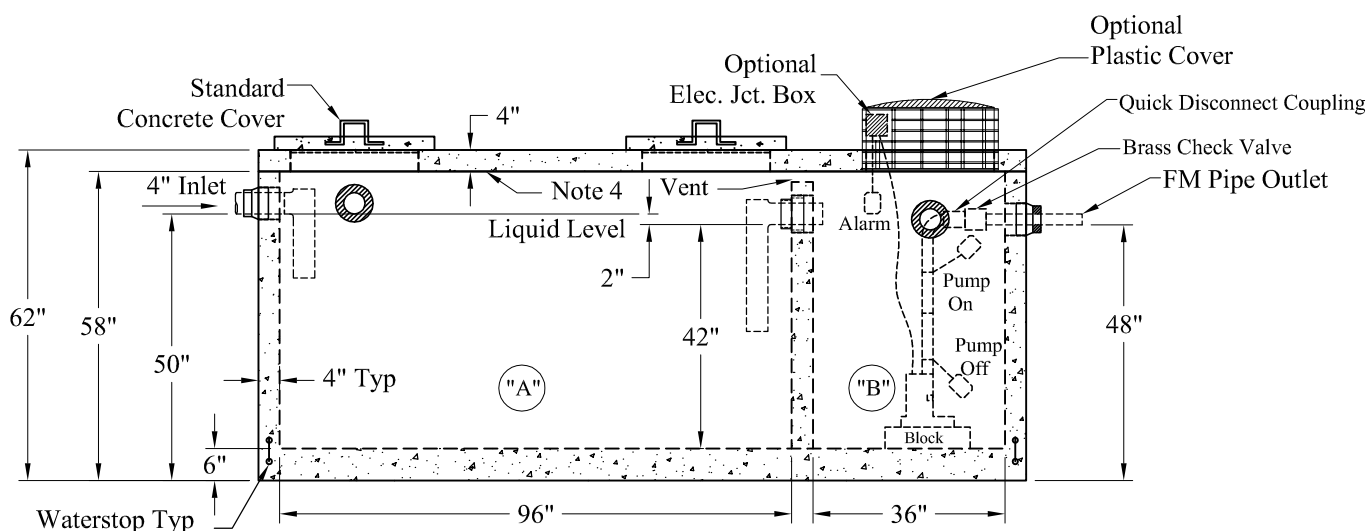


Standard Cover Configuration
Is (3) 24" Dia Concrete Covers

Optional Cover Configuration
Is (3) 24" Dia Plastic Risers
Cast In, With Plastic Covers



NOTE: A Pipe Bushing Will Be Required
On All Boots With Pipes Less Than 4"



Pumps and Related Accessories are Optional.
Junction Box And Electrical Connections
Installed By Others

General Notes

- Steel Reinforcement Conforms to Latest ASTM Specifications: ASTM-A615 Grade 60 Rebar
- Concrete: $f_c = 4,000$ psi @ 28 Days Minimum
- Flexible Sleeves Used On All Pipe Openings
- Butyl Rubber Joint Sealant Provided
- Internal PVC Baffles Available
- Inlet: Shall Penetrate at Least 9" Below the Liquid Level, But Not Deeper Than the Outlet Baffle.
Outlet: Shall Extend Below the Surface of the Liquid Equal to 40% of the Liquid Depth (16")
- "A" Liquid Level = 360 Gals/VF(30Gals/In) "A" = 1,260 Gals
"B" Liquid Level = 135 Gals/VF(11Gals/In) "B" = 472 Gals
Total = 1,732 Gals
- LD Tanks: 3' Cover Max, Non-Traffic

Est Weights:

Top Slab: 3,900 Lbs
Base: 14,900 Lbs
Total: 18,800 Lbs

Elevations:

Rim:
Invert In:
Alarm On:
Pump On:
Pump Off:
Inside Floor:

Phoenix
Precast
Products

1,250 / 500 Gallon
LD 2 Compartment
Top Seam Pump Tank

P/N: PT-1250/500MLD

Concord, NH 03301