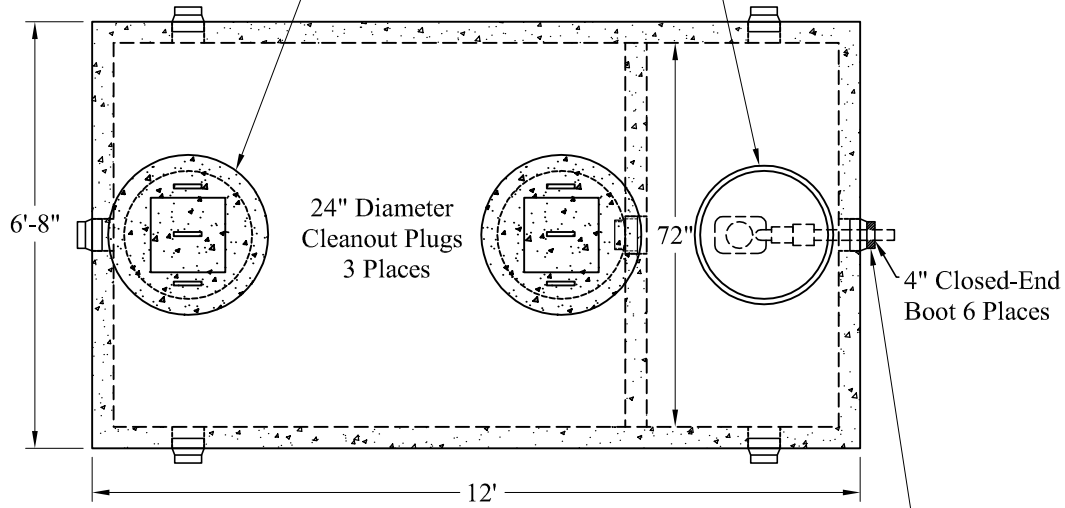
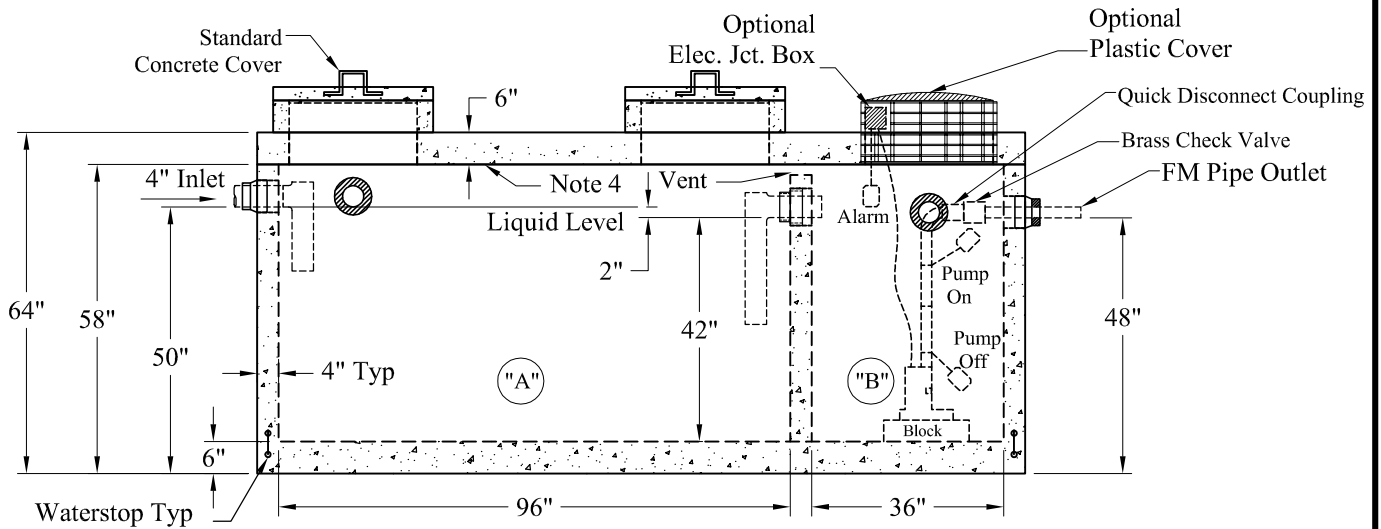


Standard Cover Configuration Is (3) 24" Dia Concrete Covers

Optional Cover Configuration Is (3) 24" Dia Plastic Risers Cast In, With Plastic Covers



NOTE: A Pipe Bushing Will Be Required On All Boots With Pipes Less Than 4"



Pumps and Related Accessories are Optional.
Junction Box And Electrical Connections
Installed By Others

General Notes

1. Steel Reinforcement Conforms to Latest ASTM Specifications: ASTM-A615 Grade 60 Rebar
2. Concrete: $f_c = 4,000$ psi @ 28 Days Minimum
3. Flexible Sleeves Used On All Pipe Openings
4. Butyl Rubber Joint Sealant Provided
5. Internal PVC Baffles Available
- Inlet: Shall Penetrate at Least 9" Below the Liquid Level, But Not Deeper Than the Outlet Baffle.
- Outlet: Shall Extend Below the Surface of the Liquid Equal to 40% of the Liquid Depth (16")
6. "A" Liquid Level = 360 Gals/VF(30Gals/In) "A" = 1,260 Gals
"B" Liquid Level = 135 Gals/VF(11Gals/In) "B" = 472 Gals
Total = 1,732 Gals
7. HD Tanks: 3' - 6' Cover Max, Non-Traffic

Est Weights:
Top Slab: 5,240 Lbs
Base: 14,900 Lbs
Total: 20,140 Lbs

Elevations:	
Rim:	
Invert In:	
Alarm On:	
Pump On:	
Pump Off:	
Inside Floor:	

Phoenix
Precast
Products

1,250 / 500 Gallon
HD 2 Compartment
Top Seam Pump Tank

P/N: PT-1250/500MHD