

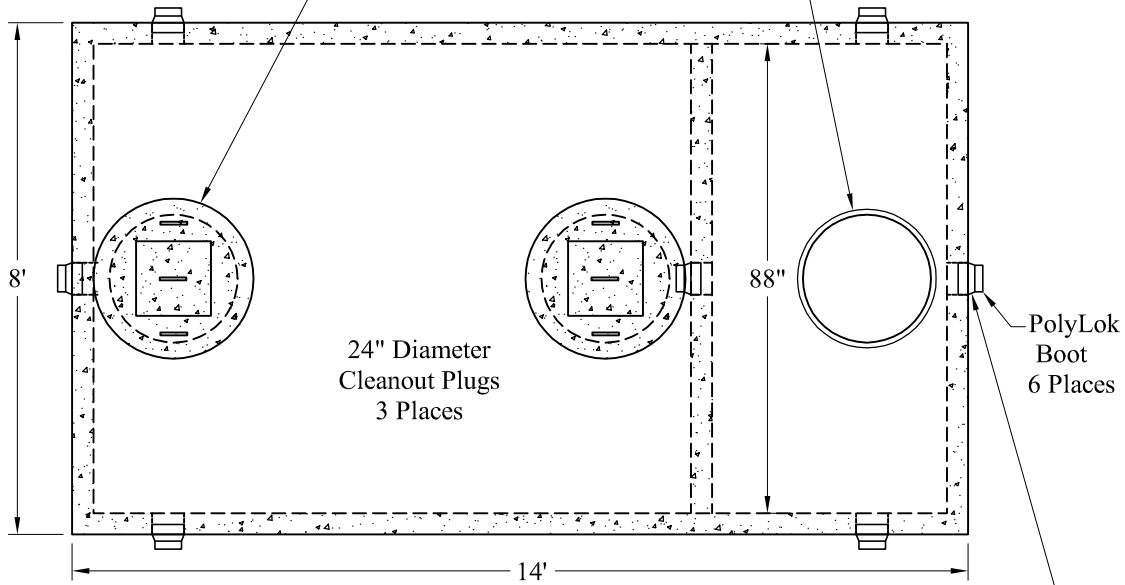
1-800-639-2199

Fax (603) 224-2927

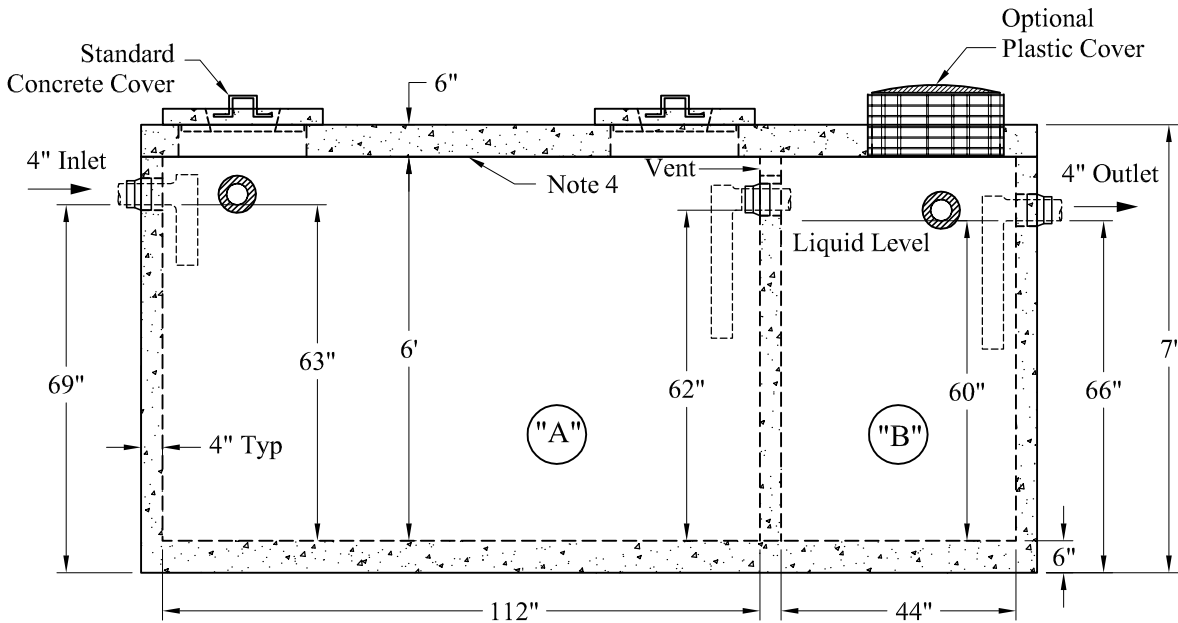
Tanks\Compartment2\_Comp\3500 HD\_2650-1000\_2 Comp Tank Sales

Standard Cover Configuration  
Is (3) 24" Dia Concrete Covers

Optional Cover Configuration  
Is (3) 24" Dia Plastic Risers  
Cast In, With Plastic Covers



NOTE: A Pipe Bushing Will Be Required  
On All Boots with Pipes Less Than 4"



**General Notes**

1. Steel Reinforcement Conforms to Latest ASTM Specifications: ASTM-A615 Grade 60 Rebar
2. Concrete:  $f_c = 4,000$  psi @ 28 Days Minimum
3. Flexible Sleeves Used On All Pipe Openings
4. Butyl Rubber Joint Sealant Provided
5. Internal PVC Baffles Available
- Inlet: Shall Penetrate at Least 9" Below the Liquid Level, But Not Deeper Than the Outlet Baffle.
- Outlet: Shall Extend Below the Surface of the Liquid Equal to 40% of the Liquid Depth (24").
6. HD Tanks: 3' -6' Cover Max, Non-Traffic

"A" Liquid Level = 513 Gals/VF (43 Gals/In)

"B" Liquid Level = 202 Gals/VF (17 Gals/In)

"A" = 2,651 Gallons

"B" = 1,008 Gallons

3,659 Gallons

Est. Weights:

Top Slab: 7,600 Lbs

Base: 23,100 Lbs

Total: 30,700 Lbs

<b>Phoenix Precast Products</b>	<b>2,650/1,000 Gallon HD 2 Compartment Top Seam Tank</b>
	<b>P/N: ST-2650/1000HD</b>

Phoenix Precast Products

Phoenix Precast Products