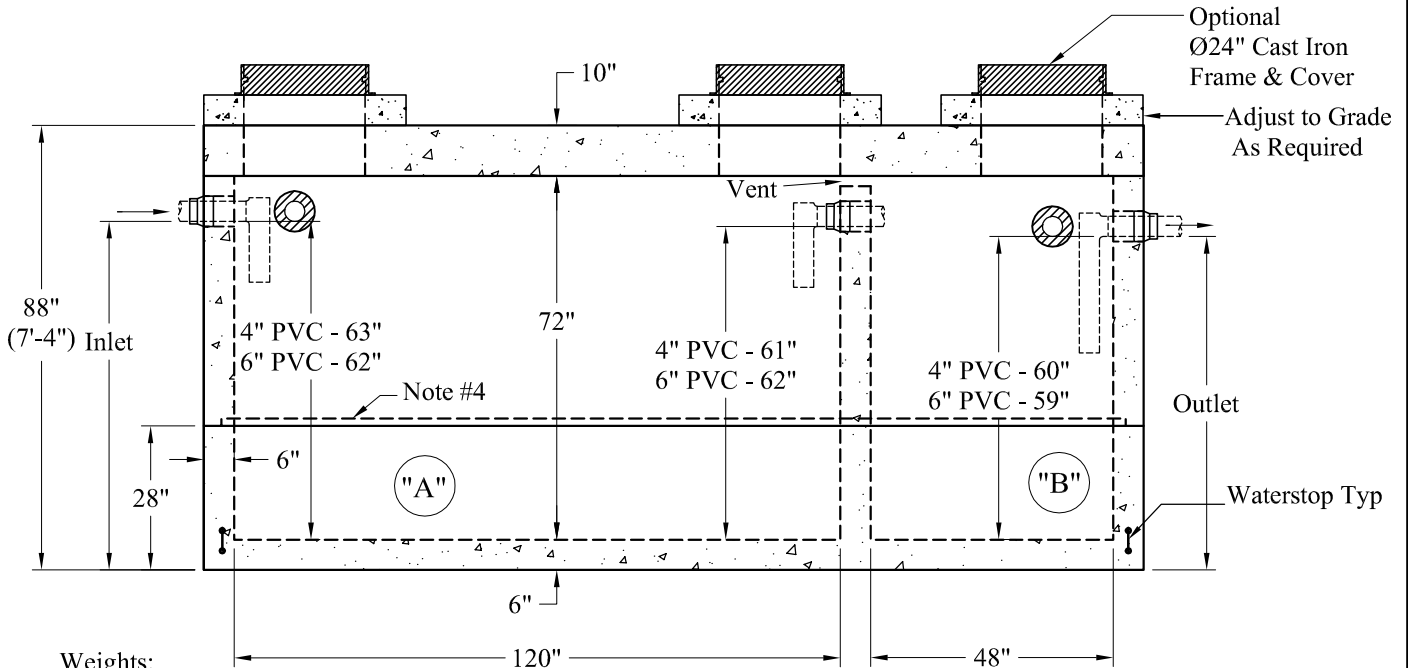
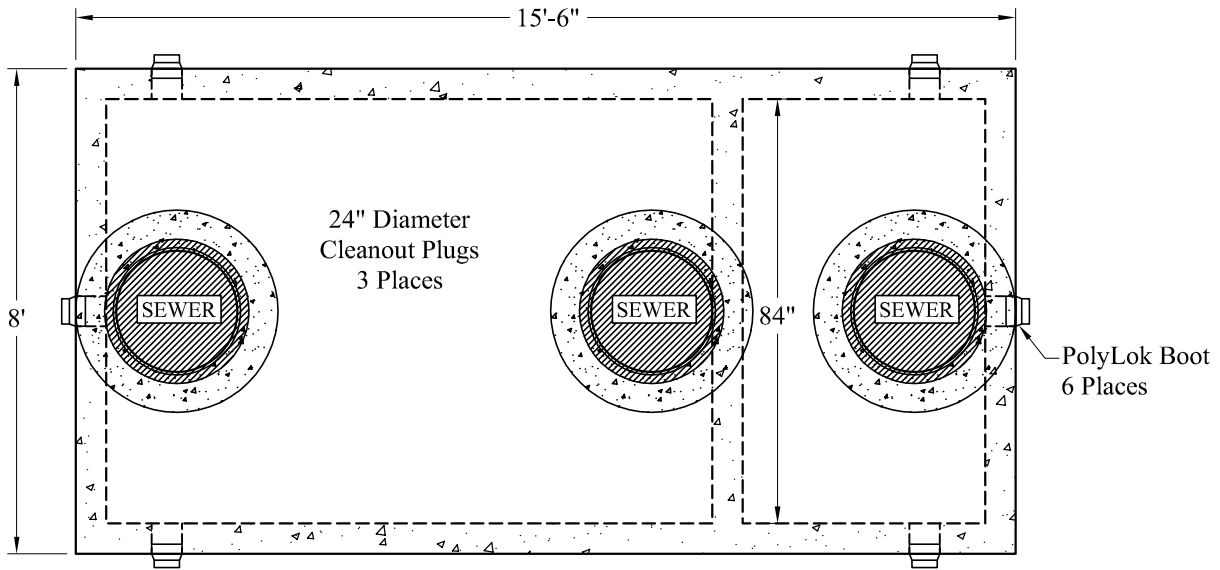


Tanks/Compartment2-Comp_H20/2500-1000_Gallon_2-Comp_H20_Tank_Sales



Weights:
 Top Slab - 15,300 Lbs
 Riser - 15,400 Lbs
 Base - 16,900 Lbs
 Total Weight: 47,600 Lbs

General Notes:

1. Steel Reinforcement Conforms to Latest ASTM Specifications: ASTM-A615 Grade 60 Rebar
2. Concrete: $f_c = 5,000$ psi @ 28 Days Minimum
3. Flexible Sleeves Provided On All Pipe Connections
4. Butyl Rubber Joint Sealant Provided
5. Internal PVC Baffles Available Upon Request
- Inlet: Shall Penetrate at Least 9" Below the Liquid Level, But Not Deeper Than the Outlet Baffle.
- Outlet: Shall Extend Below the Surface of the Liquid Equal to 40% of the Liquid Depth (24").
6. Design Loading: AASHTO-HS20-44, ASTM C-890-06
7. Design Specified As: ASTM C-1227-08, ASTM C-913-08
8. Other Inlet/Outlet Pipe Sizes Available

"A" Liquid Levels: = 525 Gals/VF(44Gals/In)
 "B" Liquid Levels: = 210 Gals/VF(18Gals/In)

4": "A"= 2,667 Gallons
 "B" = 1,050 Gallons
 6": "A"= 2,625 Gallons
 "B" = 1,033 Gallons

4" PVC Inverts:
 Inlet-69"
 Outlet-66"
 6" PVC Inverts:
 Inlet-68"
 Outlet-65"

**Phoenix
 Precast
 Products**

**2500 / 1000
 2 Compartment
 H-20 Tank**

P/N: ST-2500/1000H20

Concord, NH 03301

Phoenix Precast Products

Phoenix Precast Products