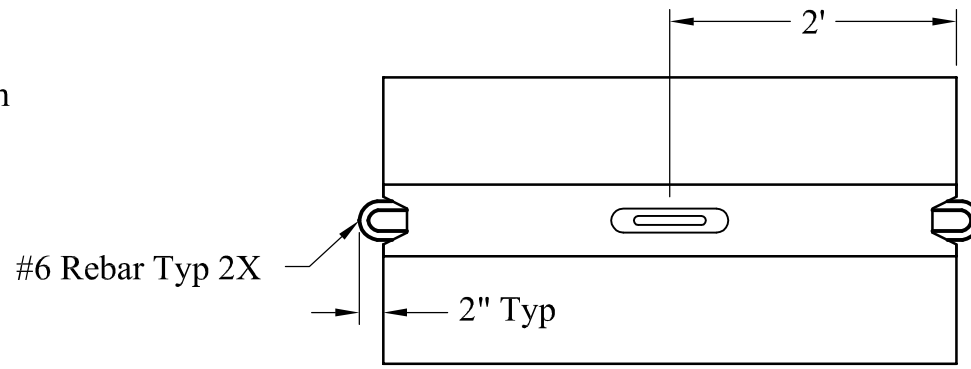
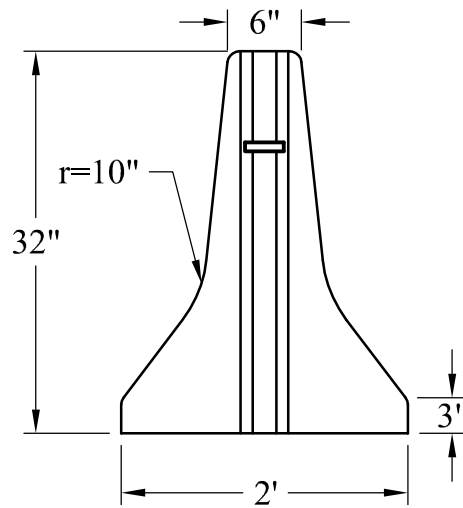


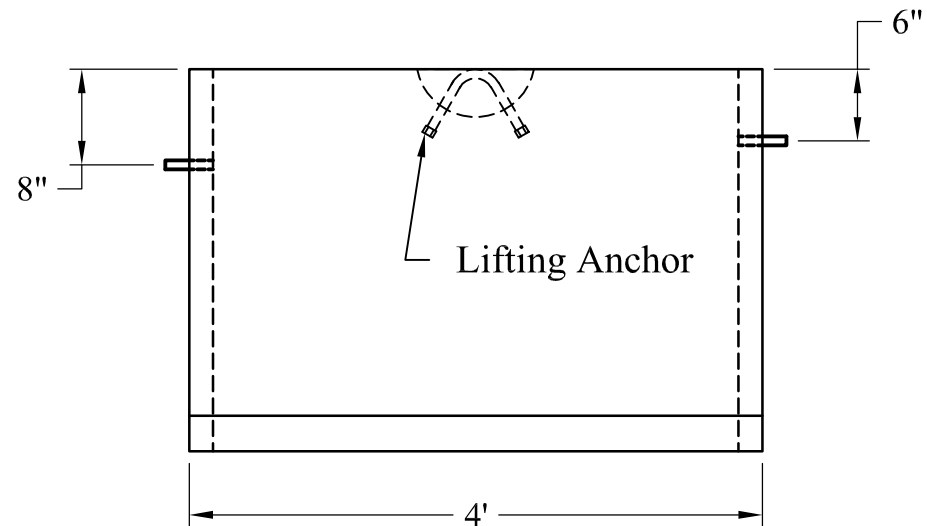
- 1.) Reinforcement: ASTM A-615  
Grade 60 With Minimum 2" Cover
- 2.) Concrete:  $f_c = 4,000$  psi @ 28 Days Minimum
- 3.) Est Weight: 1,600 Lbs



Plan View



End View



Elevation View

Phoenix  
Precast  
Products

Portable Concrete  
Barrier - 4'