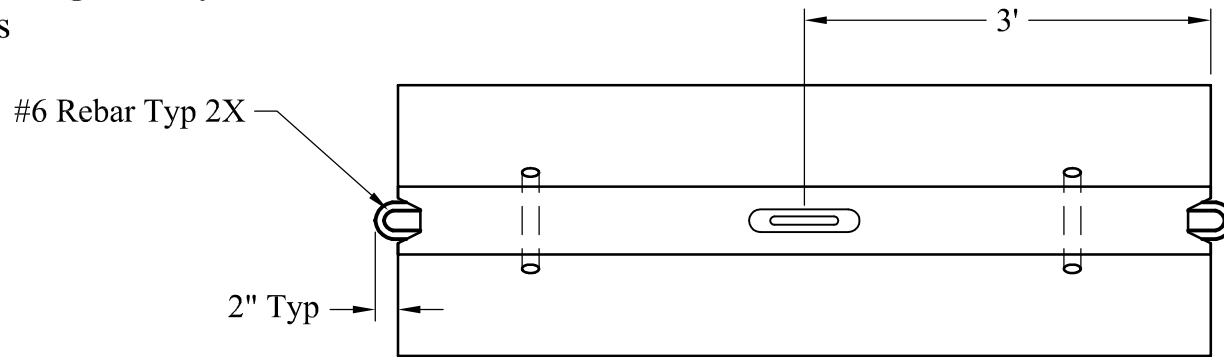
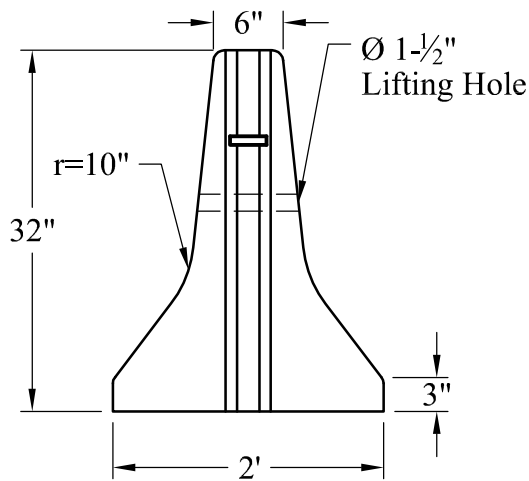


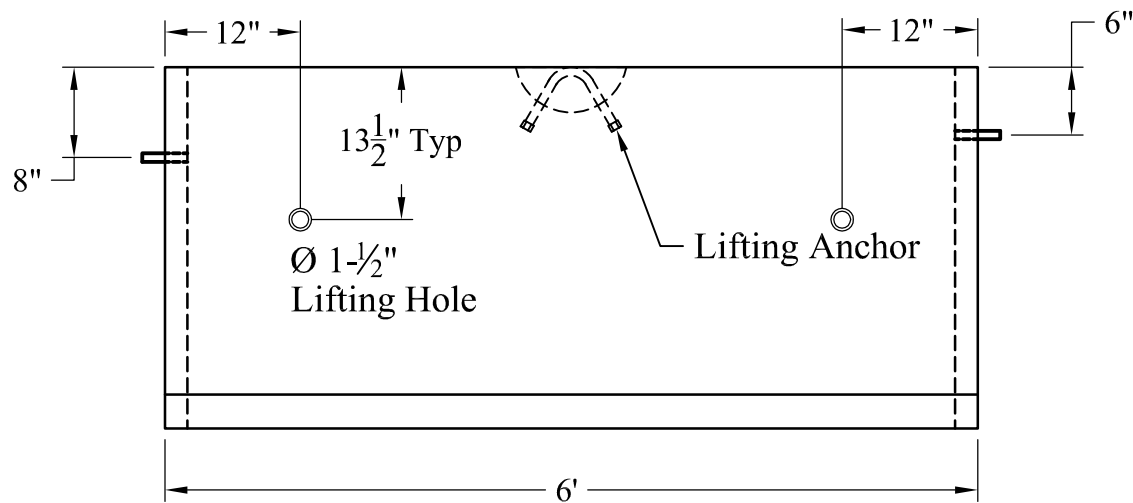
- 1.) Reinforcement: ASTM A-615, Grade 60 With Minimum 2" Cover
- 2.) Concrete: $f_c = 4,000$ PSI @ 28 Days Minimum
- 3.) Est Weight: 2,400 Lbs



Plan View



End View



Elevation View

Phoenix
Precast
Products

Portable Concrete
Barrier - 6'