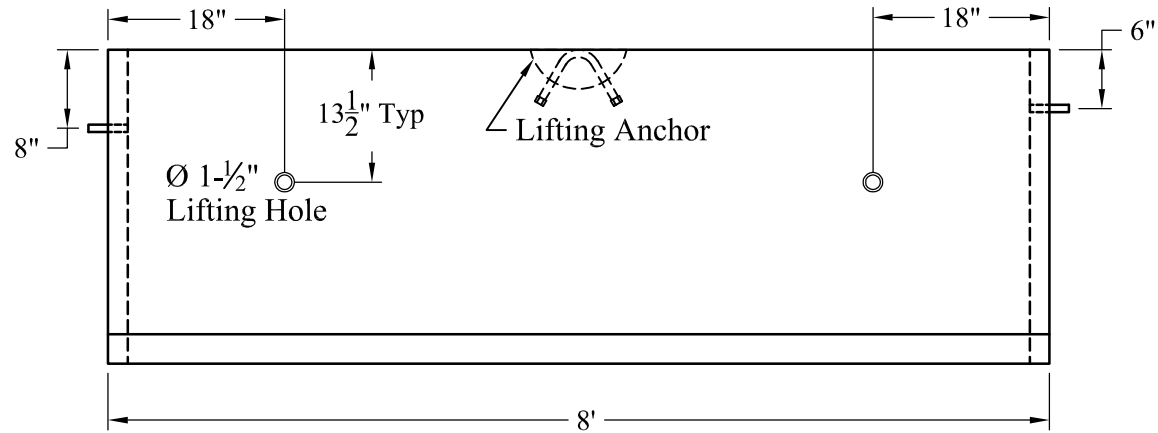
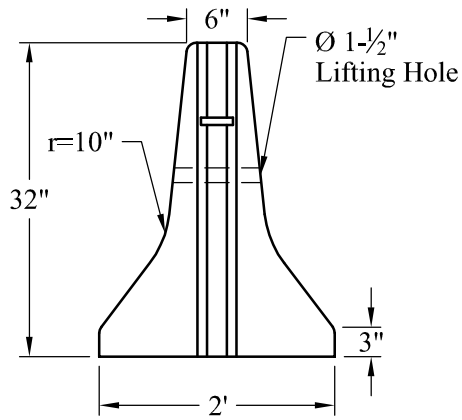
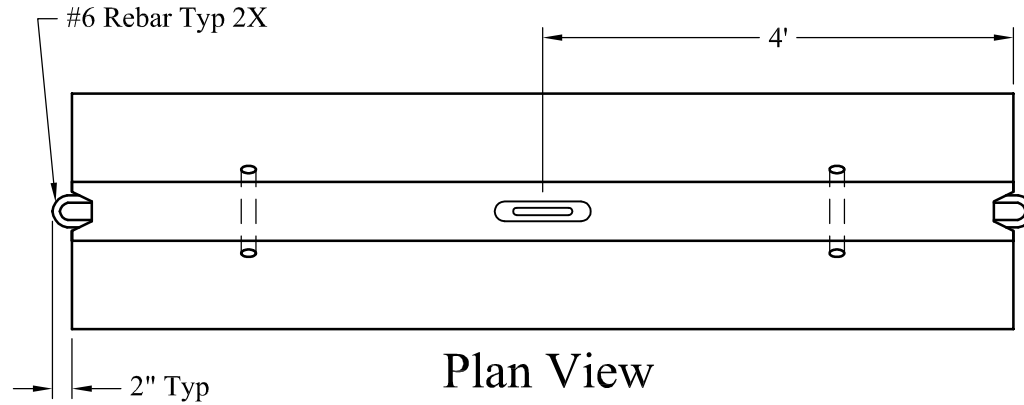


- 1.) Reinforcement: ASTM A-615  
Grade 60 With Minimum 2" Cover
- 2.) Concrete:  $f_c = 4,000$  psi @ 28 Days Min
- 3.) Est Weight: 3,200 Lbs



Phoenix Precast Products

Phoenix Precast Products

Phoenix  
Precast  
Products

Portable Concrete  
Barrier - 8'