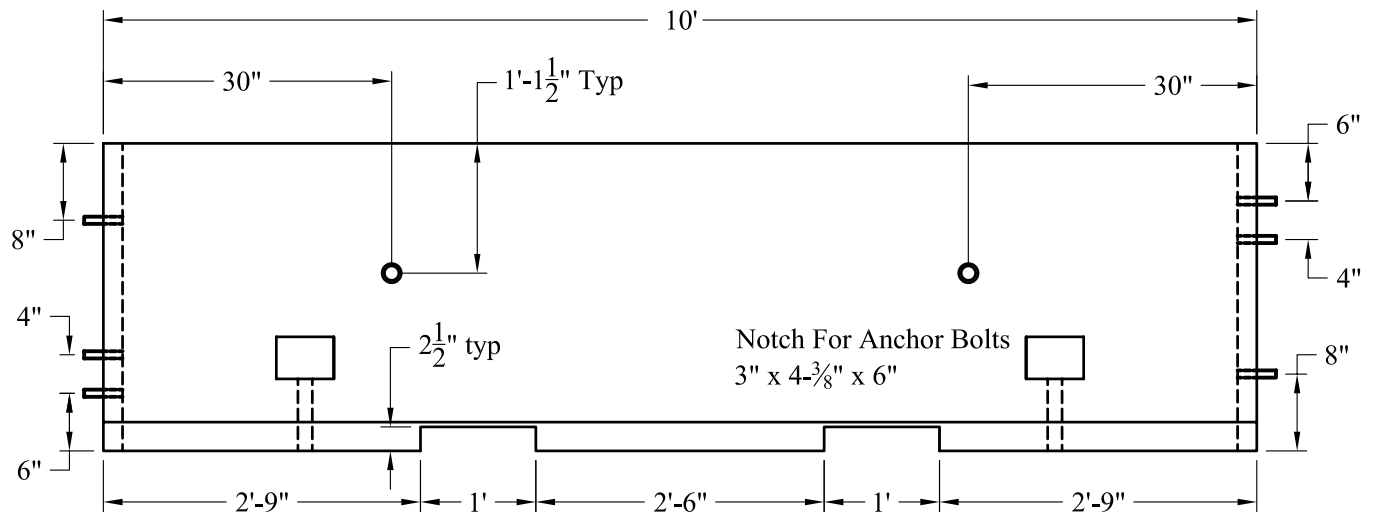
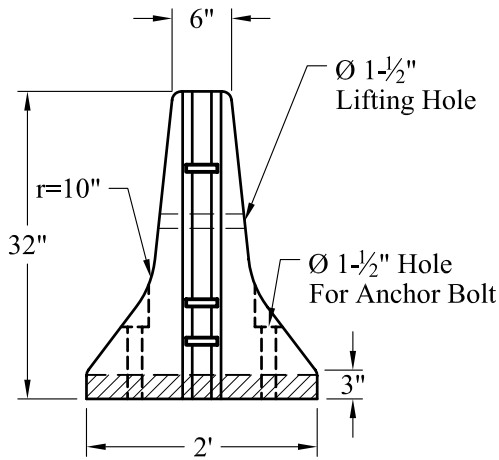
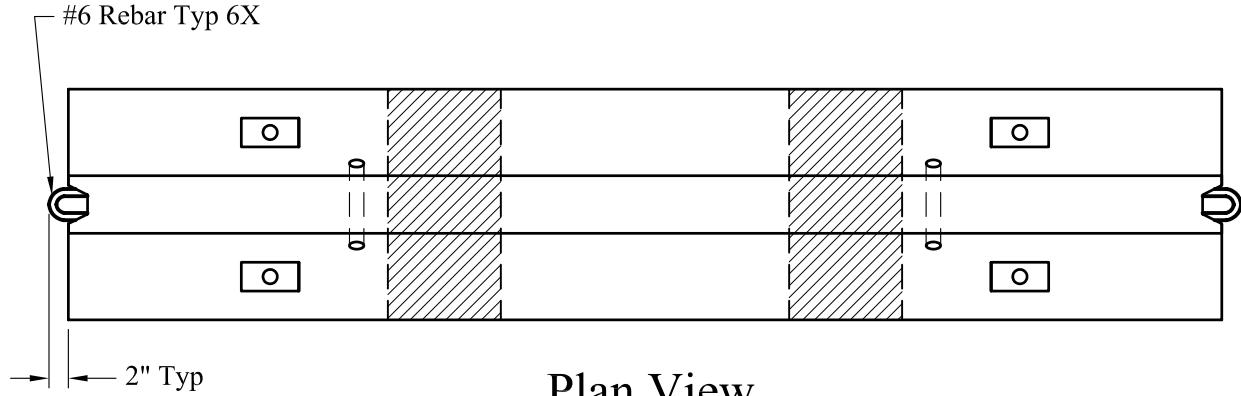


- 1.) Reinforcement: ASTM A-615, Grade 60, With Minimum 2" Cover
- 2.) Concrete: 4,000 PSI @ 28 Days Minimum
- 3.) All Exposed Edges of Concrete Shall Have a 3/4" Radius Except as Shown.
- 4.) Est Weight: 4000 Lbs
- 5.) Reference PCB4-3LP10



Phoenix Precast Products

Phoenix Precast Products

Phoenix  
Precast  
Products

NH DOT  
Portable Concrete  
Barrier