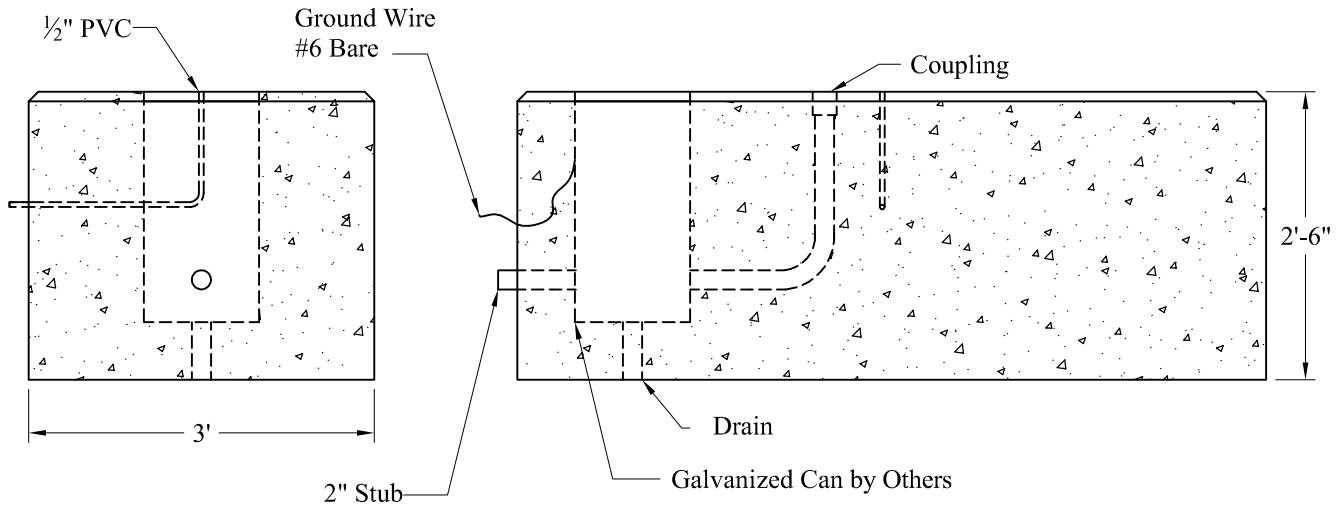


Plan View



End View

Side View

Est. Weight: 7,200 Lbs

General Notes

1. Concrete: $f_c = 5,000$ psi @ 28 Days Minimum
2. Reinforcing Steel: ASTM-A615 Grade #60 Black Deformed Bars

<p>Phoenix Precast Products</p>	<p>Distance Remaining Light Airport Sign Base</p>
------------------------------------------------	-------------------------------------------------------

P/N: