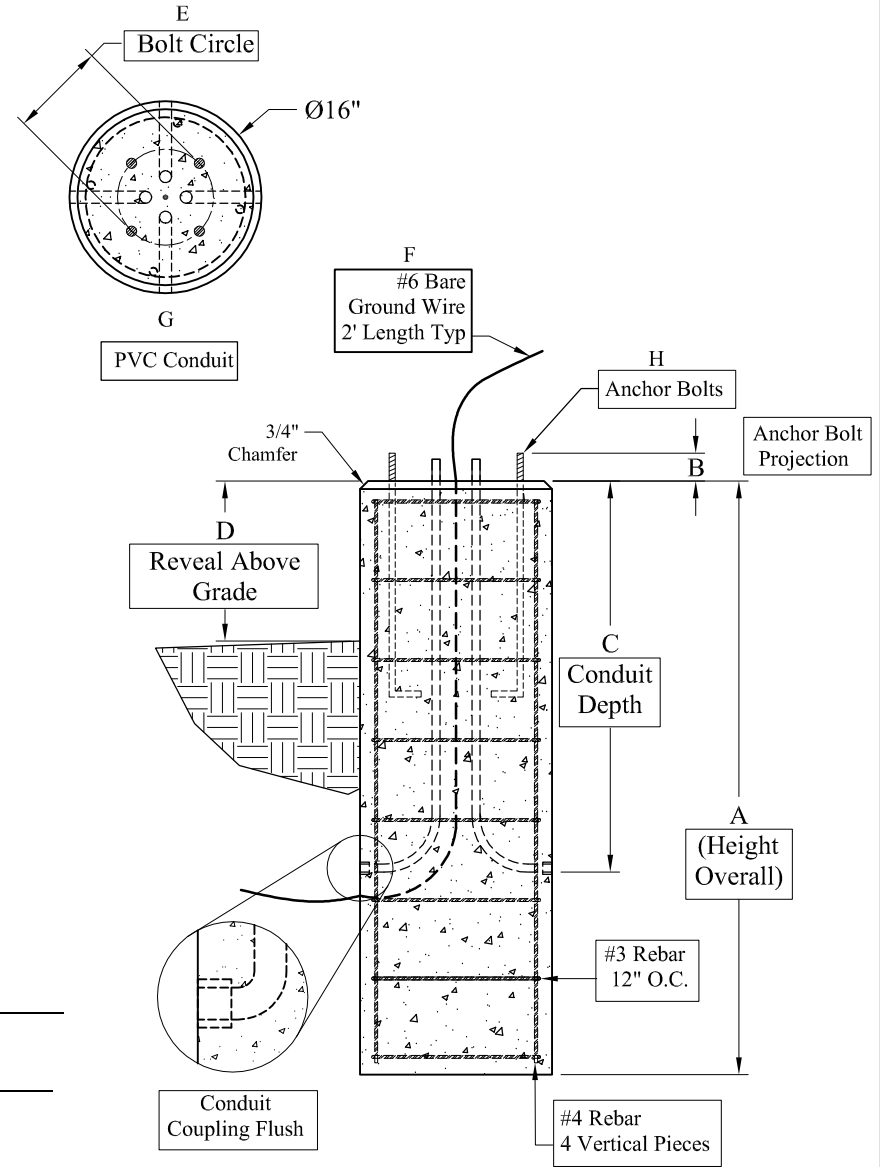
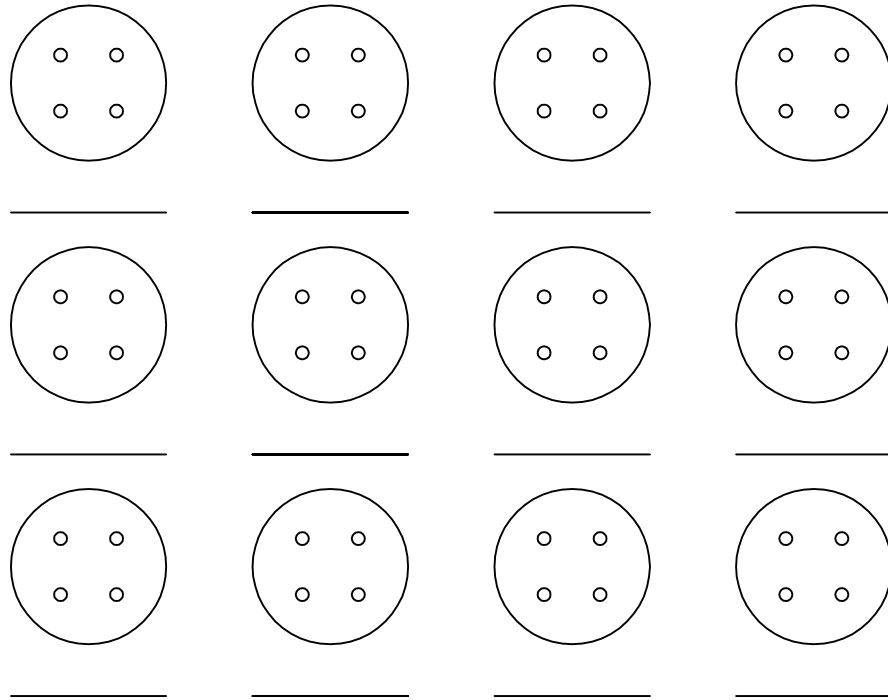


Phoenix Precast Products

Phoenix Precast Products



**Dimensions:**

A.) Total Base Height \_\_\_\_\_

B.) Bolt Projection \_\_\_\_\_

C.) Depth of Conduit \_\_\_\_\_

D.) Reveal Above Grade \_\_\_\_\_

E.) Bolt Circle Diameter \_\_\_\_\_

F.) Ground Wire - \_\_\_\_\_

G.) Conduit (PVC) \_\_\_\_\_

H.) Anchor Bolts - Dia & Length \_\_\_\_\_

**General Notes:**

1. Concrete:  $f_c = 5,000$  PSI @ 28 Days Min

2. Reinforcing Steel: ASTM A615 Grade 60 Rebar

Job #: \_\_\_\_\_

Cust: \_\_\_\_\_

Signoff: \_\_\_\_\_

Date: \_\_\_\_\_

Phoenix Precast Products	16" Diameter Light Pole Base
--------------------------------	---------------------------------