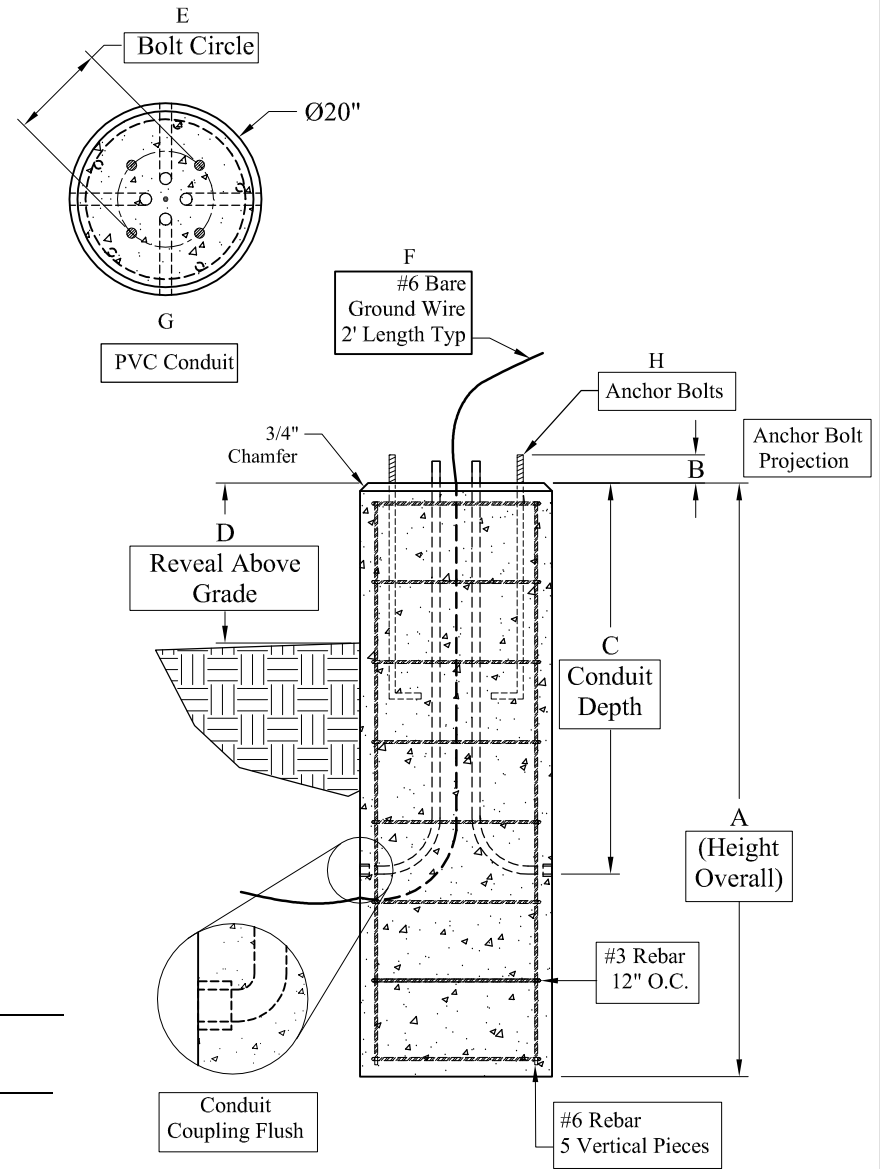
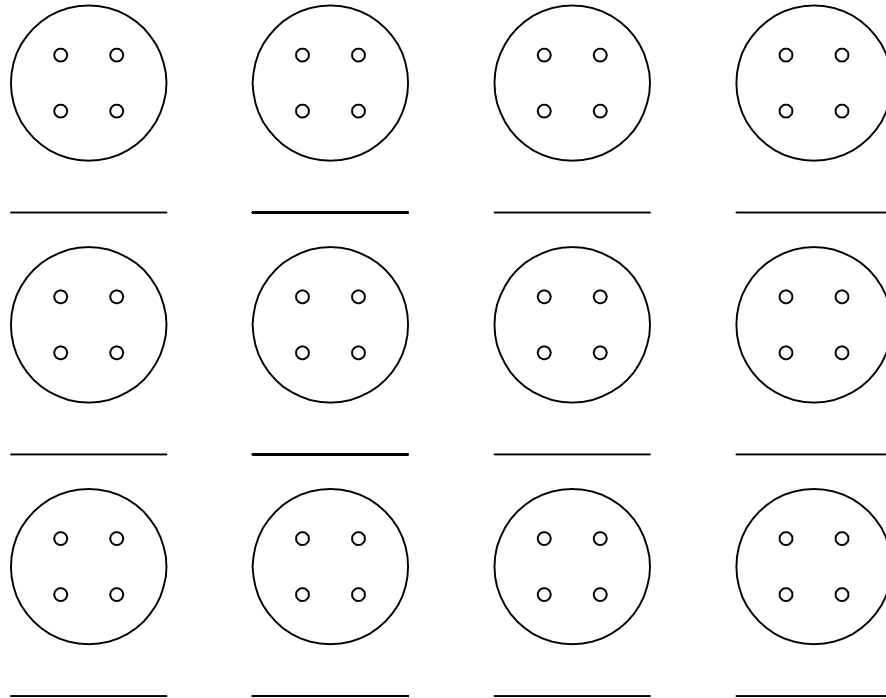


Phoenix Precast Products

Phoenix Precast Products



Dimensions:

- A.) Total Base Height _____
- B.) Bolt Projection _____
- C.) Depth of Conduit _____
- D.) Reveal Above Grade _____
- E.) Bolt Circle Diameter _____
- F.) Ground Wire - _____
- G.) Conduit (PVC) _____
- H.) Anchor Bolts - Dia & Length _____

General Notes:

- 1. Concrete: $f_c = 5,000$ PSI @ 28 Days Min
- 2. Reinforcing Steel: ASTM A615 Grade 60 Rebar

Job #: _____

Cust: _____

Signoff: _____

Date: _____

| | |
|--------------------------------|---|
| Phoenix Precast Products | 20" Diameter Light Pole Base |
|--------------------------------|---|