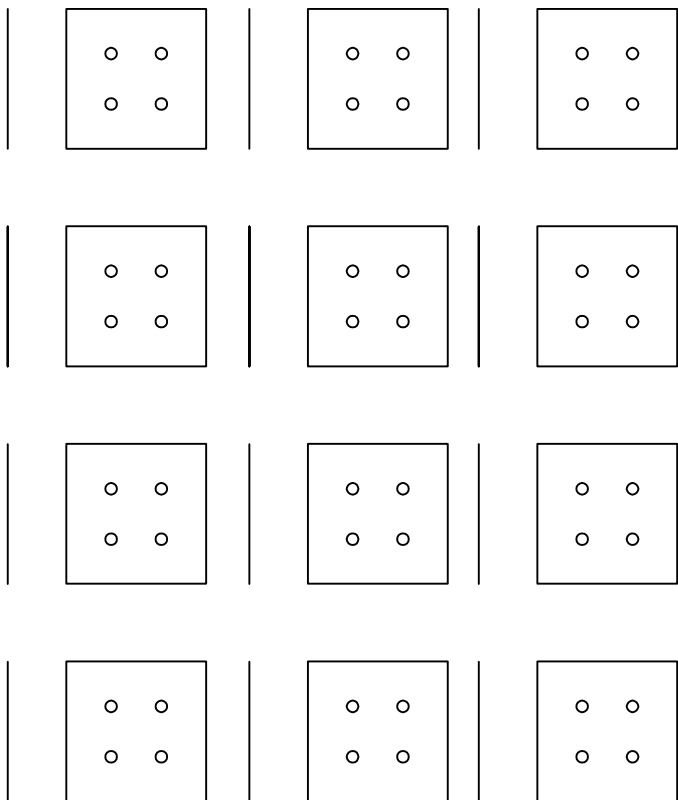


**Phoenix Precast Products**



**Dimensions:**

A.) Total Base Height \_\_\_\_\_

B.) Bolt Projection \_\_\_\_\_

C.) Depth of Conduit \_\_\_\_\_

D.) Reveal Above Grade \_\_\_\_\_

E.) Bolt Circle Diameter \_\_\_\_\_

F.) Ground Wire - \_\_\_\_\_

G.) Conduit (PVC) \_\_\_\_\_

H.) Anchor Bolts - Dia & Length \_\_\_\_\_

**General Notes:**

1. Concrete:  $f_c = 5,000$  PSI @ 28 Days Min

2. Reinforcing Steel: ASTM A615 Grade 60 Rebar #6 Verticals, #3 Hoops

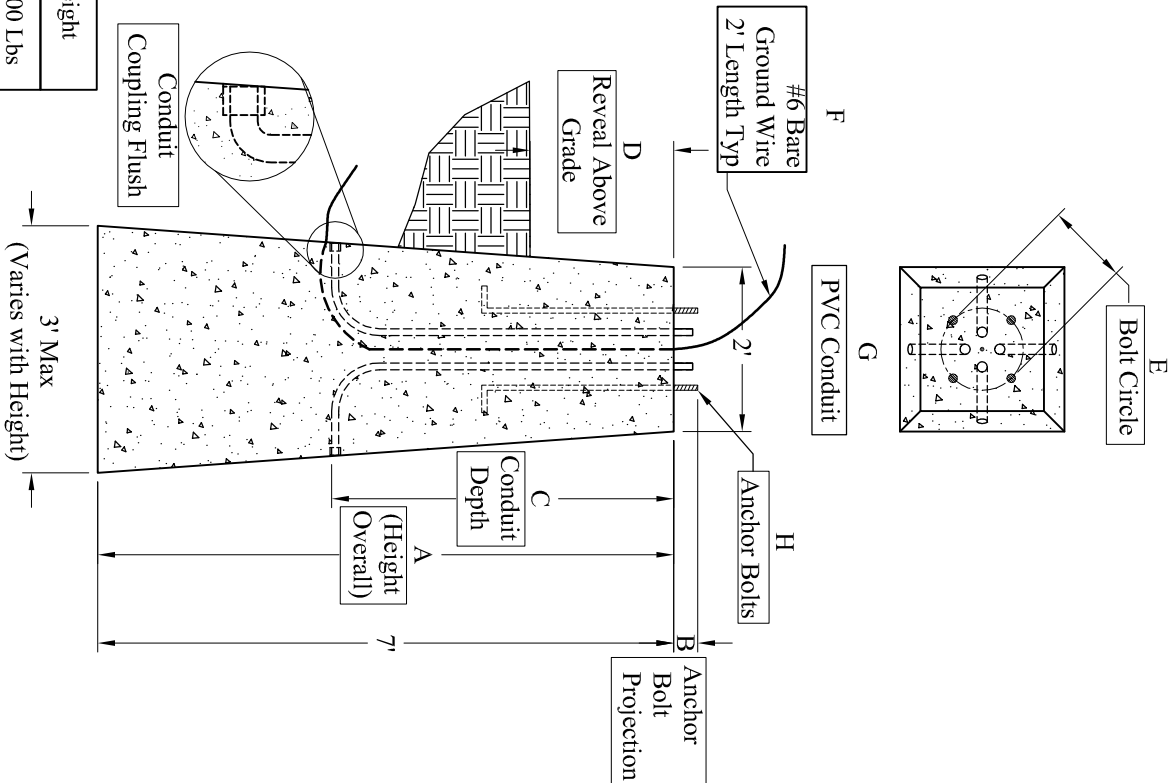
Job #: \_\_\_\_\_

Cust: \_\_\_\_\_

Signoff: \_\_\_\_\_

Date: \_\_\_\_\_

Height	Base Width	Weight
4'-0"	2'-7"	3,100 Lbs
5'-0"	2'-9"	4,125 Lbs
6'-0"	2'-10"	5,250 Lbs
7'-0"	3'-0"	6,500 Lbs



Phoenix  
Precast  
Products

Pyramid  
Light Pole Base