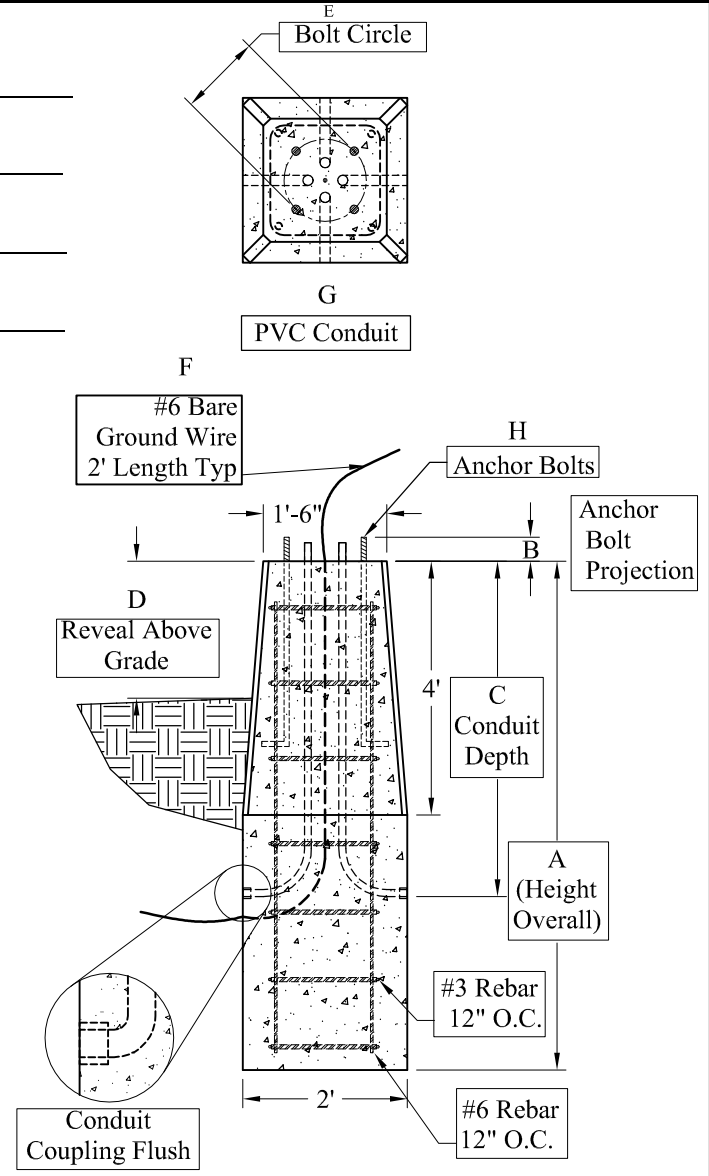


Job #: \_\_\_\_\_  
 Cust: \_\_\_\_\_  
 Signoff: \_\_\_\_\_  
 Date: \_\_\_\_\_



**Dimensions:**

- A.) Total Base Height \_\_\_\_\_
- B.) Bolt Projection \_\_\_\_\_
- C.) Depth of Conduit \_\_\_\_\_
- D.) Reveal Above Grade \_\_\_\_\_
- E.) Bolt Circle Diameter \_\_\_\_\_
- F.) Ground Wire - \_\_\_\_\_
- G.) Conduit (PVC) \_\_\_\_\_
- H.) Anchor Bolts - Dia & Length \_\_\_\_\_

**General Notes:**

1. Concrete:  $f_c = 5,000$  PSI @ 28 Days Min
2. Reinforcing Steel: ASTM A615 Grade 60 Rebar  
#6 Verticals, #3 Hoops

Height	Weight
4'-6"	2,110 Lbs
5'-0"	2,410 Lbs
5'-6"	2,705 Lbs
6'-0"	3,005 Lbs
6'-6"	3,295 Lbs
7'-0"	3,590 Lbs
7'-6"	3,890 Lbs
8'-0"	4,185 Lbs
8'-6"	4,480 Lbs
9'-0"	4,775 Lbs
9'-6"	5,070 Lbs
10'-0"	5,370 Lbs

Phoenix  
Precast  
Products

Standard Tapered  
Light Pole Base  
(Long)