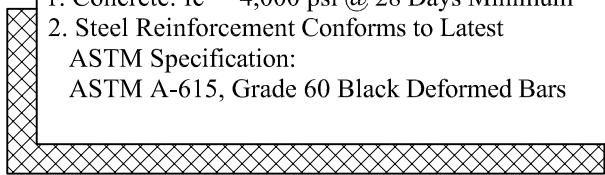


Required Dimensions	
L	
W	
H	
D1	
D2	
B.O.-L	
B.O.-W	

General Notes

1. Concrete: $f_c = 4,000$ psi @ 28 Days Minimum
2. Steel Reinforcement Conforms to Latest ASTM Specification:
ASTM A-615, Grade 60 Black Deformed Bars



Phoenix
Precast
Products

Generator Pad