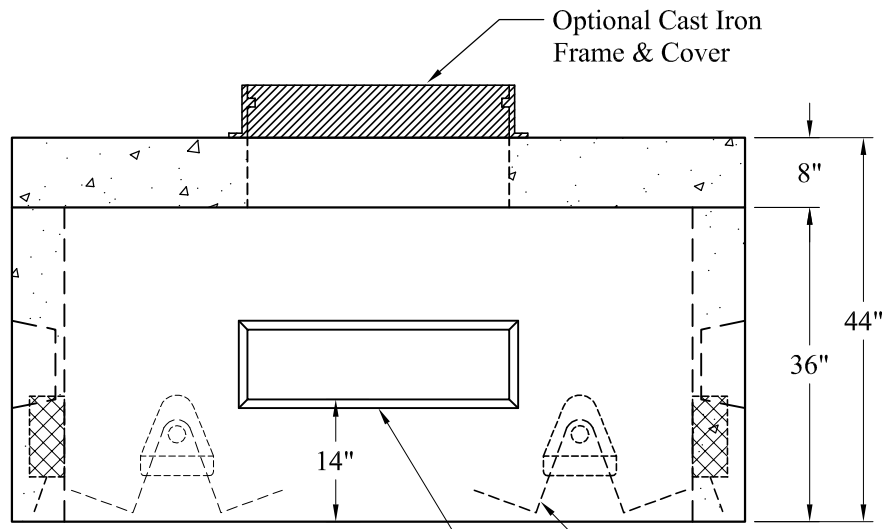


8" x 16" Knockout 2 Places  
See Note 5



Optional Cast Iron  
Frame & Cover

Pull Pockets Typ 4 Places  
8" x 30" Knockouts 2 Places  
See Note 5

**Est Weight:**  
Top Slab: 2,925 Lbs  
Box: 4,900 Lbs  
Total: 7,825 Lbs

**General Notes**

- 1.) Concrete fc: 5,000 psi @ 28 Days Minimum
- 2.) Reinforcement Steel: ASTM A615 Grade 60 Rebar
- 3.) Design Loading: AASHTO-HS20-44
- 4.) Butyl rubber Joint Sealant Provided
- 5.) Modified Openings per Job Specifications are Available

Phoenix  
Precast  
Products

48" x 72" x 36"  
Pull Box

P/N: