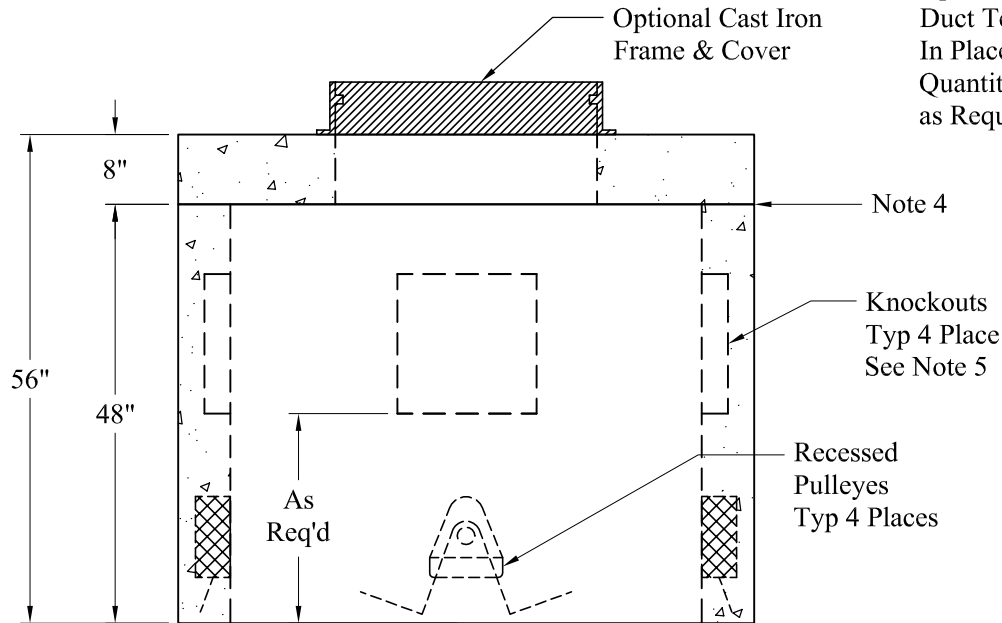


Optional  
Duct Terminators  
In Place of Knock-outs.  
Quantity & Elevation  
as Required



**Est Weights:**

Top Slab -	2,520 Lbs
Base -	5,925 Lbs
<b>Total Weight:</b>	<b>8,445 Lbs</b>

General Notes

1. Concrete:  $f_c = 5,000$  psi @ 28 Days Minimum
2. Reinforcing Steel: ASTM-A615 Grade #60
3. Design Loading: AASHTO-HS20-44
4. Butyl Rubber Joint Sealant Provided
5. Openings per Job Specifications are Available

Phoenix  
Precast  
Products

54" x 54" x 48"  
Pull Box

P/N: