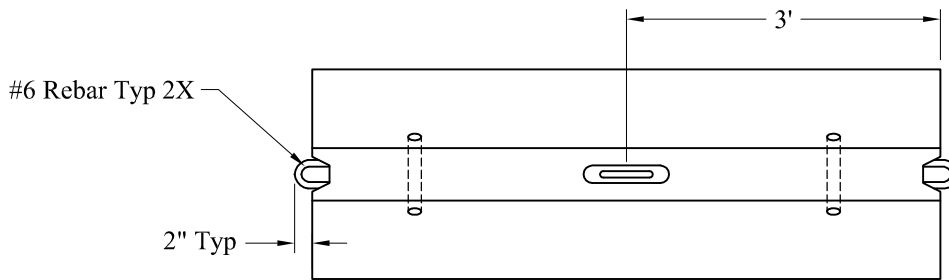
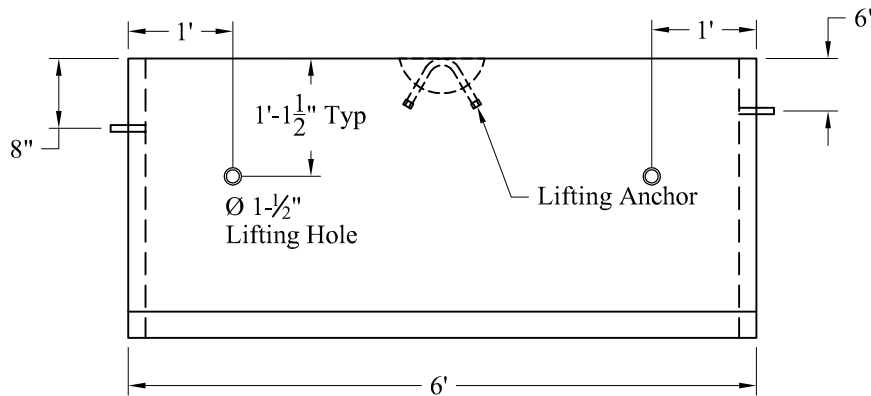


End View



Plan View



Elevation View

General Notes

1. Reinforcing Steel: ASTM-A615 Grade #60
2. Concrete:  $f_c = 5,000$  psi @ 28 Days Minimum
3. All Exposed Edges of Concrete Shall Have a  $\frac{3}{4}$ " Radius Except as Shown.
4. Standard Item #
5. Item ID # 8830-

Est Weight: 2,400 Lbs

Phoenix  
Precast  
Products

Liberty Utilities  
6' Portable Concrete  
Barrier