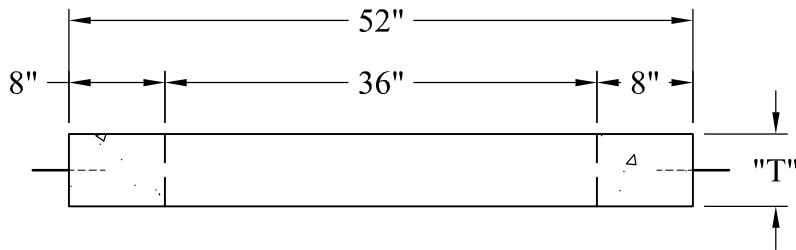
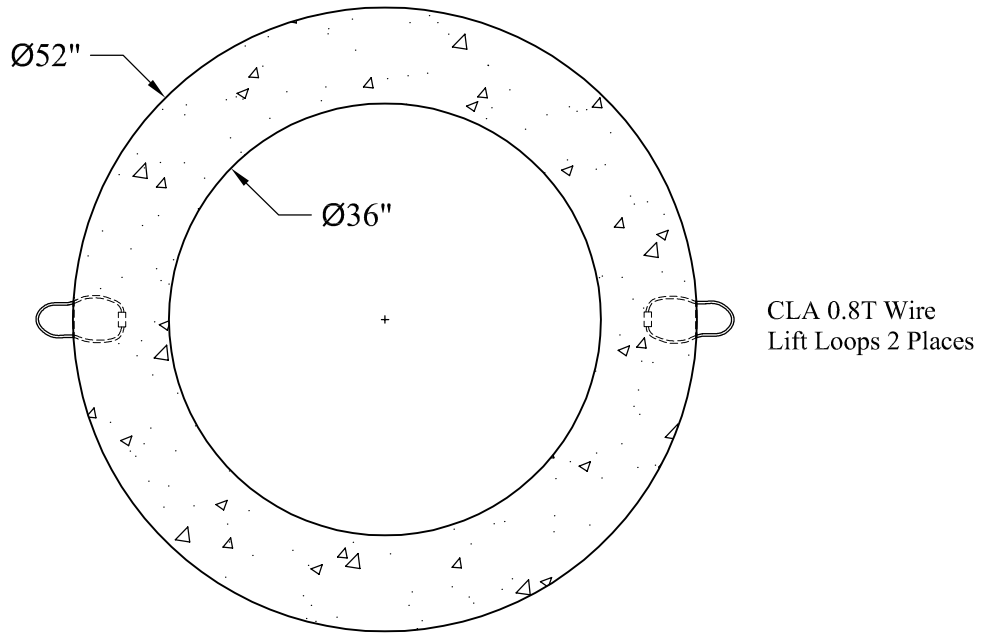


General Notes

1. Concrete: $f_c = 5,000$ psi @ 28 Days Minimum
2. Steel Reinforcement Conforms to Latest ASTM Specification A-615 Grade 60



Grade Ring Chart			
Item Number	Part Number	Dim "T"	Weight
UM15CR - T - 3	8830-9201628	3"	285 Lbs
UM15FR - T - 6	8830-9201629	6"	570 Lbs

**Phoenix
Precast
Products**

Liberty Utilities 36" ID
Grade Ring LUMS-3422