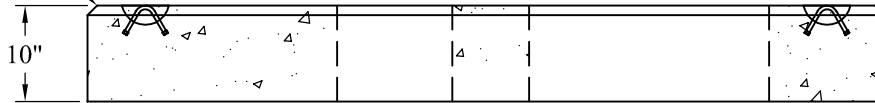


Recessed Handles 4X

3/4" Chamfer



General Notes

1. Concrete: $f_c = 5,000$ psi @ 28 Days Minimum. 6% (+/- 1%) Air Entrainment.
2. Reinforcing Steel: Conforms to Latest ASTM-A615 Grade 60 Black Deformed Bars.
3. Conforms to ACI 318

Est. Weight: 5,350 Lbs

Phoenix
Precast
Products

Libert Utilities
LU-MS 2583 (NG 44-114)
3 Phase Transformer Pad
750-2500 KVA