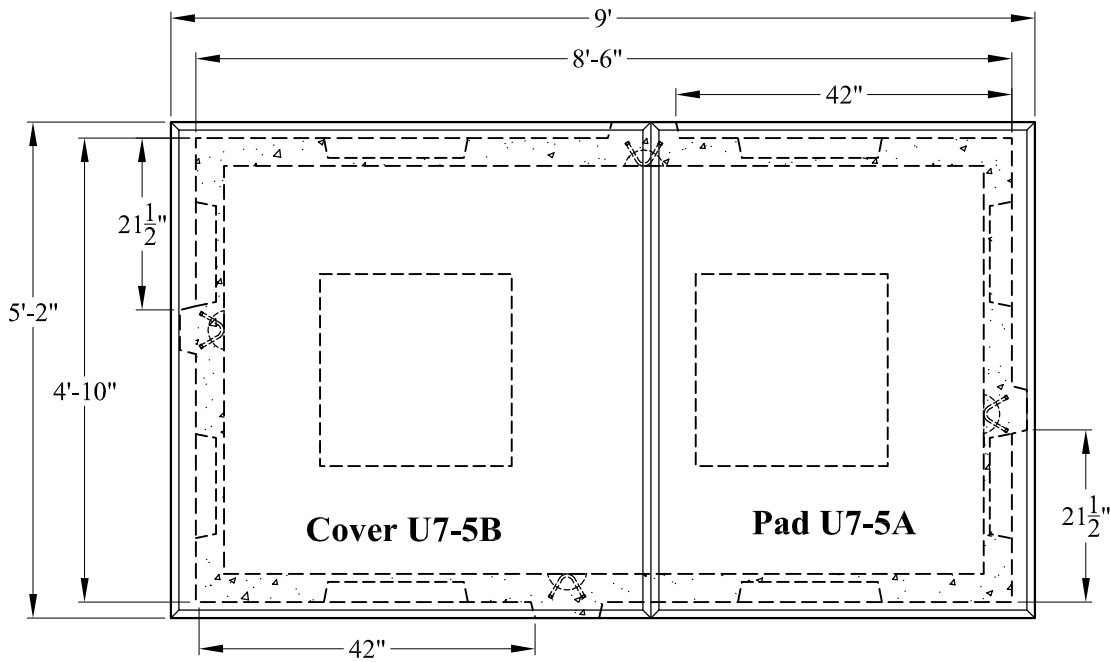


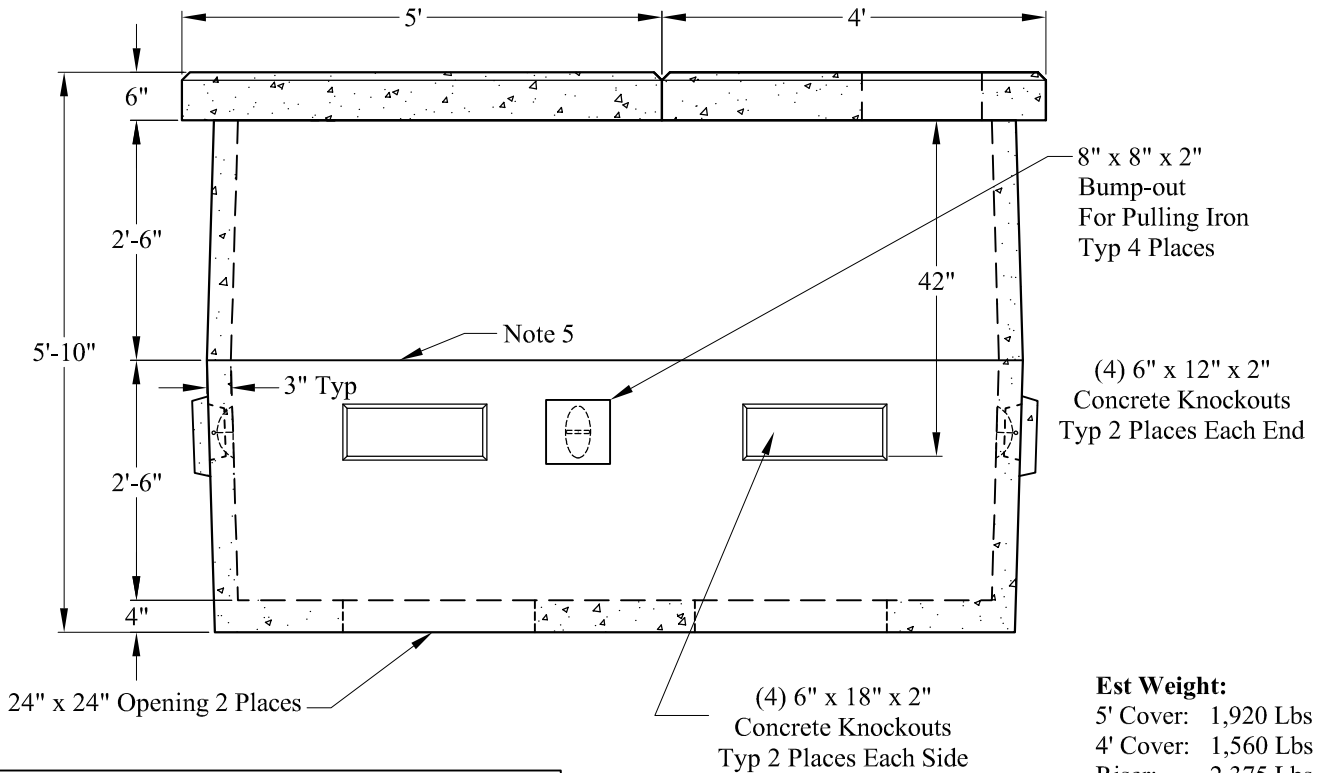
1-800-639-2199

Fax (603) 224-2927

Electrical\CO-OP\Standard\U5-5 Splicing Pulling Vault Sales



Recessed Pull Handles 4 Places In Vault



Est Weight:
 5' Cover: 1,920 Lbs
 4' Cover: 1,560 Lbs
 Riser: 2,375 Lbs
 Base: 4,300 Lbs
 Total: 10,155 Lbs

General Notes

1. Reinforcement Steel Conforms to: ASTM A615 Grade 60
2. Concrete: $f_c = 5,000$ psi @ 28 Days Minimum
3. Conforms to NHEC Specification
4. Top of Vault Shall be 4" - 6" Above Finish Grade
5. Butyl Joint Sealant Provided
6. Vault is for Multiple Residence Applications
7. Vault is for Non-Traffic Applications

Phoenix
Precast
Products

NH Co-Op
U5-5 Splicing and Pulling
Vault

P/N: NHEC-U5-5SPSPLICE

Phoenix Precast Products

Phoenix Precast Products