

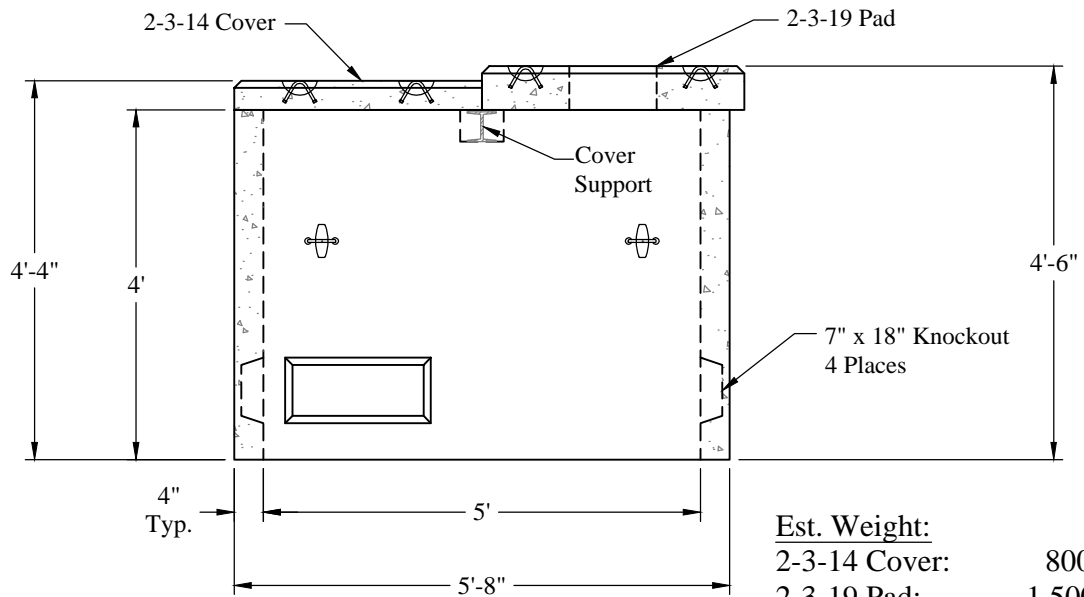
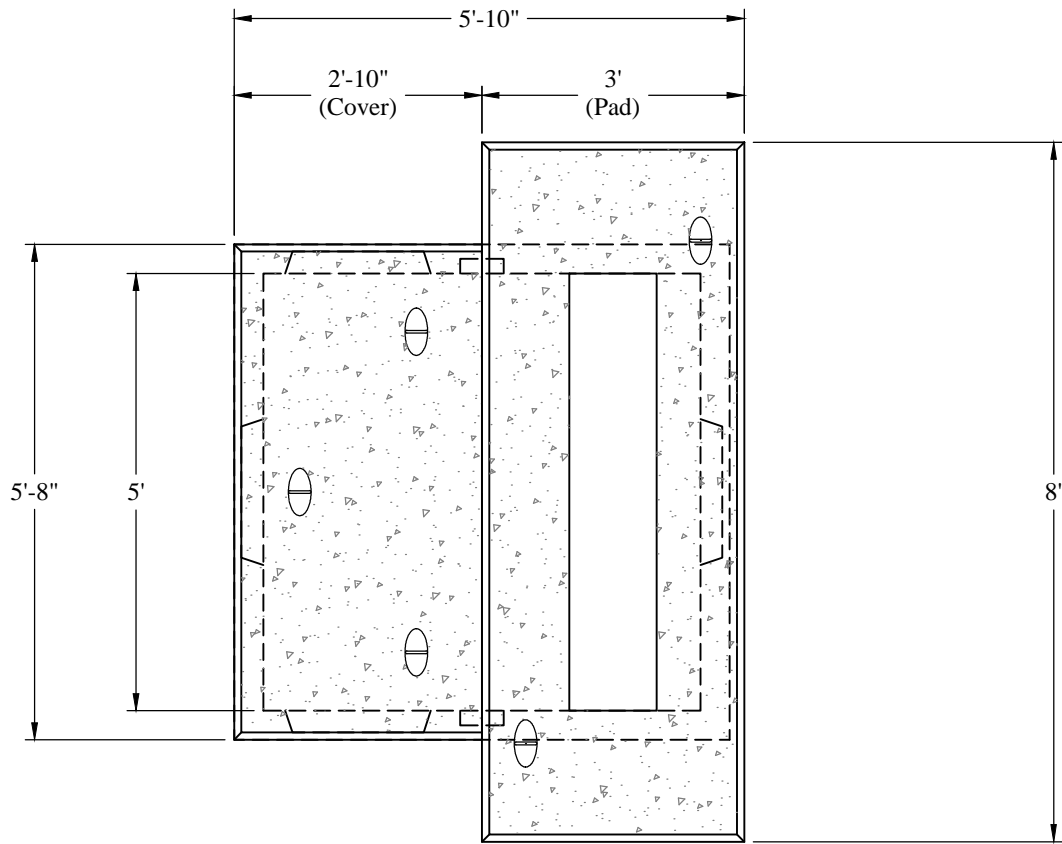
1-800-639-2199

Fax (603) 224-2927

Electrical\Unitil\2-3-16_Assembly_Sales_Rev4

Phoenix Precast Products

Phoenix Precast Products



<u>Est. Weight:</u>	
2-3-14 Cover:	800 Lbs
2-3-19 Pad:	1,500 Lbs
Vault:	4,200 Lbs
Total:	6,500 Lbs

General Notes

1. Concrete: $f_c = 5,000$ psi @ 28 Days Minimum
2. Reinforcement Steel Conforms to:
ASTM A615 Grade 60 Black Deformed Bars

Phoenix
Precast
Products

Unitil 2-3-16
Assembly

P/N: UEH-2316

77 Regional Drive

Concord, NH 03301