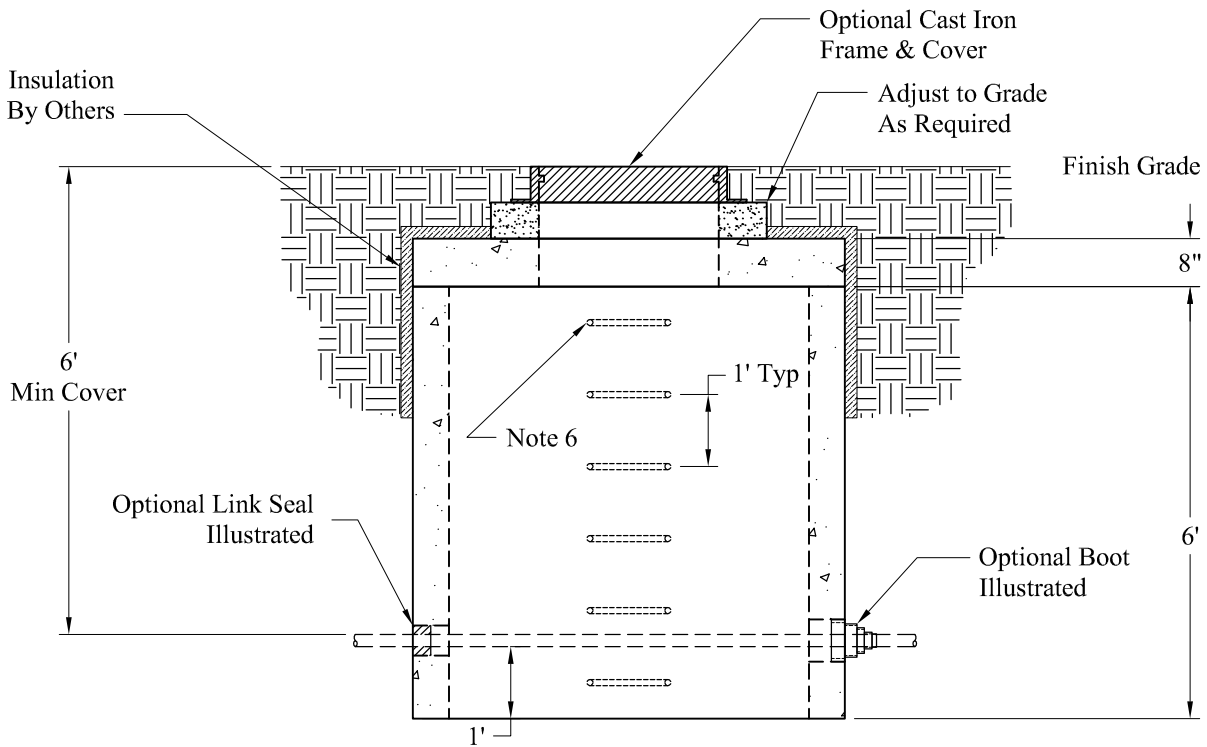


Plan View



Front View

**Est. Weights:**

Top Slab:	2,650 Lbs
Base:	8,000 Lbs
<b>Total:</b>	<b>10,650 Lbs</b>

**General Notes**

1. Concrete:  $f_c = 5,000$  psi @ 28 Days Minimum, Type III Cement
2. Steel Reinforcement Conforms to Latest ASTM Specification: ASTM A-615, Grade 60 Black Deformed Bars
3. Butyl Rubber Joint Sealant Provided Conforms to ASTM C-990 and Federal Spec SS-S-210A
4. Design Loading: AASHTO-HS20-44
5. Design Specification: per Latest ASTM C-857 & C858
6. Steel Reinforced Copolymer Polypropylene Plastic Step Conforms To Latest ASTM C478

Phoenix  
Precast  
Products

4' x 5' x 6'  
Meter Pit

P/N: