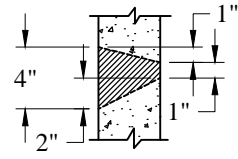
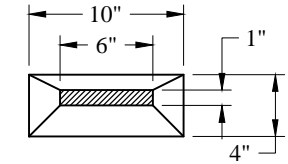
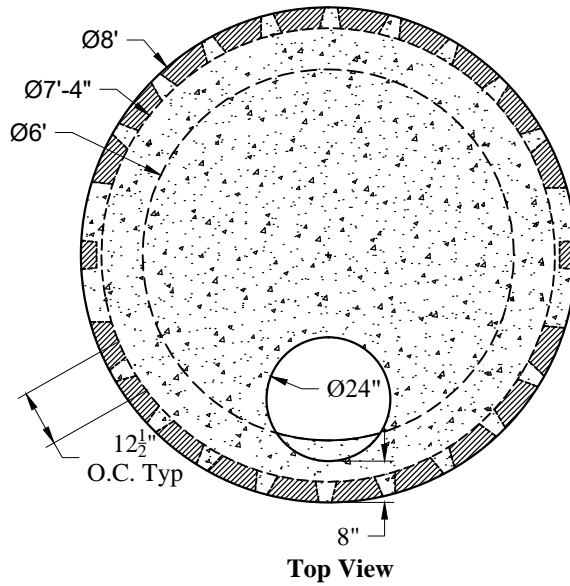


1-800-639-2199

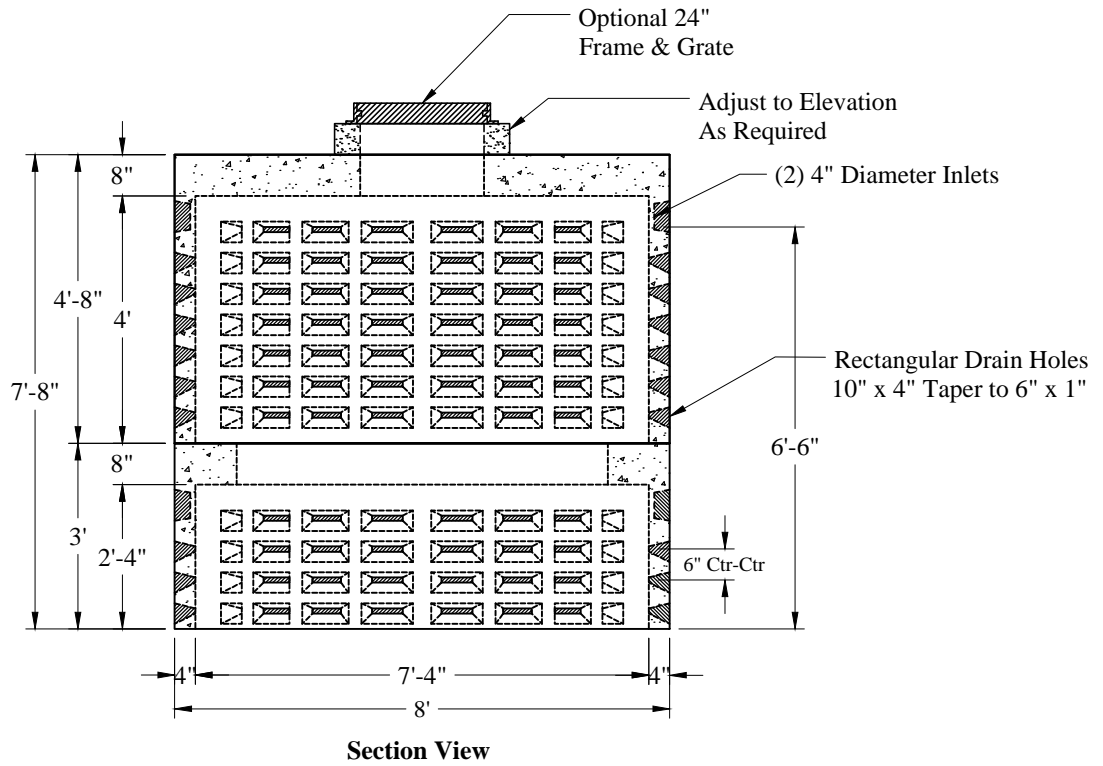
Fax (603) 224-2927

Drywells\Standard\8ft Dia\8Ft_OD_2100 Gal DW_Rev3.dwg



Detail of Openings (NTS)

Volume:
316 Gals / Vert Ft



Est Weights:
Top: 7,900 Lbs
Bottom: 4,100 Lbs
Total: 12,000 Lbs

General Notes

1. Concrete: $f_c = 4,000$ psi @ 28 Days Minimum
2. Steel Reinforcement Conforms To Latest ASTM Specifications:
 - ASTM A-615 Grade 60 Rebar
 - ASTM A-185 Welded Wire Fabric
3. Design Loading: AASHTO-HS20-44
4. Optional Cast Iron Covers or Concrete Covers Available
5. Hole Coring Available for Larger Diameter Pipes
6. All Sections Are Butt Joint

<p style="font-size: 1.2em; margin: 0;">Phoenix Precast Products</p>	<p style="font-size: 1.5em; margin: 0;">8' O.D. 2,100 Gallon Dry Well</p>
<p>P/N:</p>	

77 Regional Drive

Concord, NH 03301

Phoenix Precast Products

Phoenix Precast Products