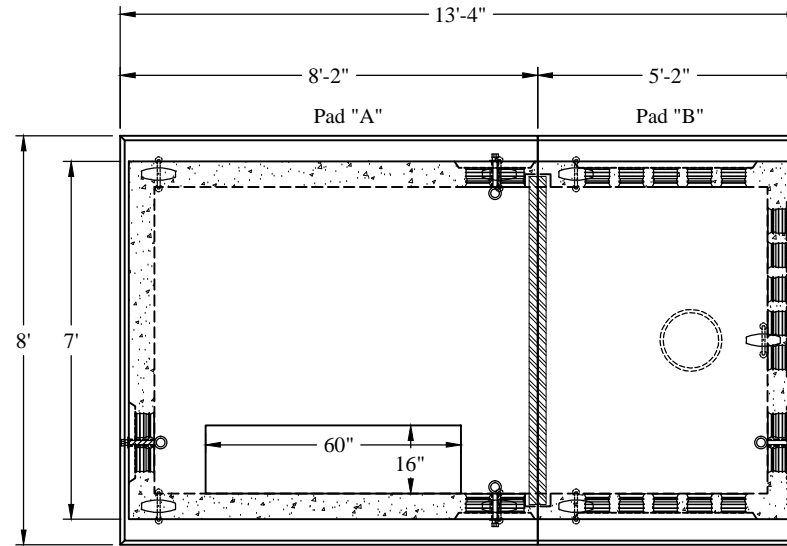
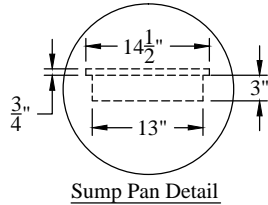


1-800-639-2199

Fax (603) 224-2927

Phoenix Precast Products

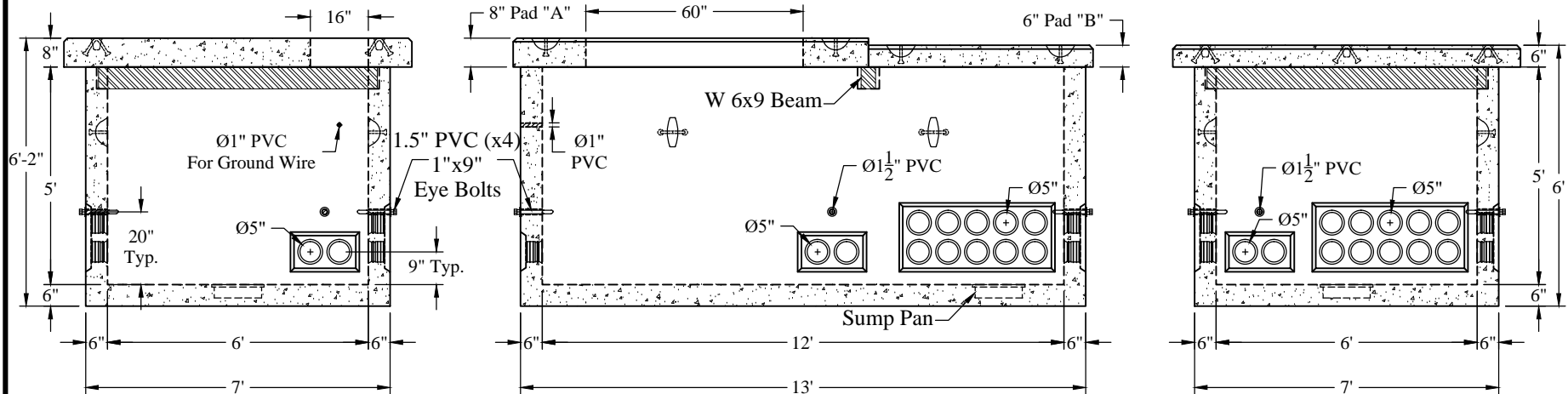
Phoenix Precast Products

**General Notes:**

1. Concrete; $f_c = 5,000$ psi @ 28 Days Min.
2. Reinforcing Steel: ASTM-A615 Grade #60.
3. Design Loading: AASHTO-H10
4. Pulleys = $\varnothing 1\frac{1}{4}$ " Eyebolt With Galvanized Steel Washer.
5. Built to Green Mountain Power Spec K30.4

Est. Weight:

Vault:	20,800 Lbs
Pad "A":	5,800 Lbs
Pad "B":	3,100 Lbs
Total:	29,700 Lbs



Customer:	-	Job No.	-	Date	-	Drawn By:	-
Location:	-	Custom No.	-	Rev:	-	Rev'd By:	-

Phoenix
Precast
Products

Green Mountain Power
K.30.4 Vault

77 Regional Drive

Concord, NH 03301