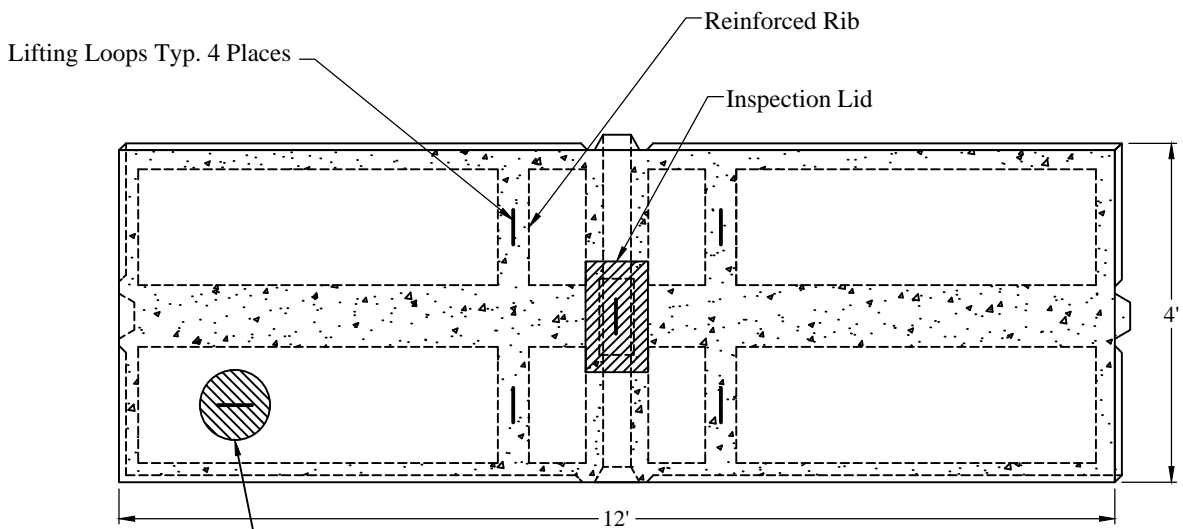


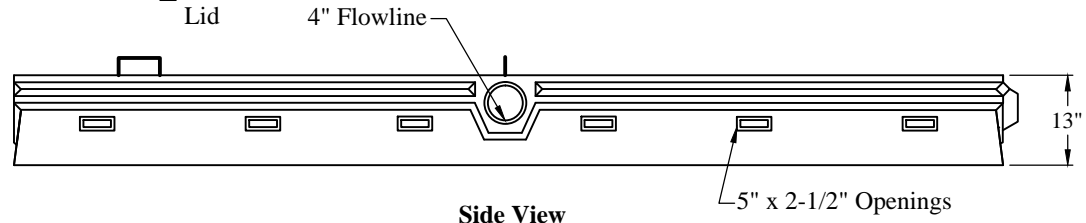
1-800-639-2199

Fax (603) 224-2927

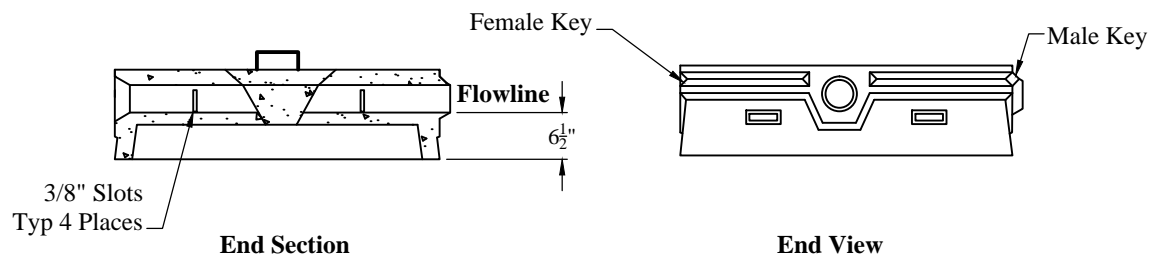
D:\Boxes & Chambers\Chambers\4Ft x 12Ft x 13In S\_Flow\_diffuser



Top View

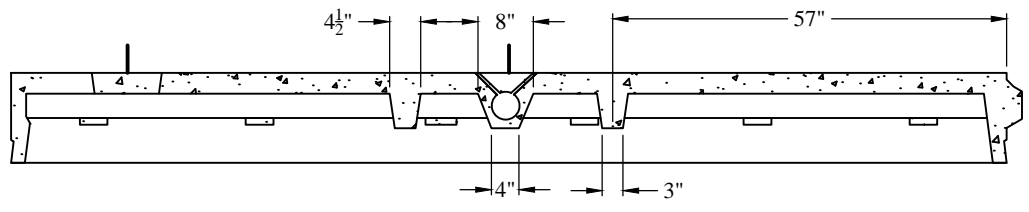


Side View



End Section

End View



Side Section

**General Notes**

1. Steel Reinforcement Conforms to Latest ASTM Specifications: ASTM-A615 Grade 60 Rebar
2. Concrete:  $f_c = 4,000$  psi @ 28 Days Minimum
3. Design Loading: AASHTO- HS20-44
4. Distribution Line Running Across Chamber
5. Est Weight: 2,855 Lbs

<b>Phoenix Precast Products</b>	4Ft x 12Ft x 13In "S" Flow Diffuser Leaching Chamber
---	--

P/N: LC-4X12SHD

Phoenix Precast Products

Phoenix Precast Products