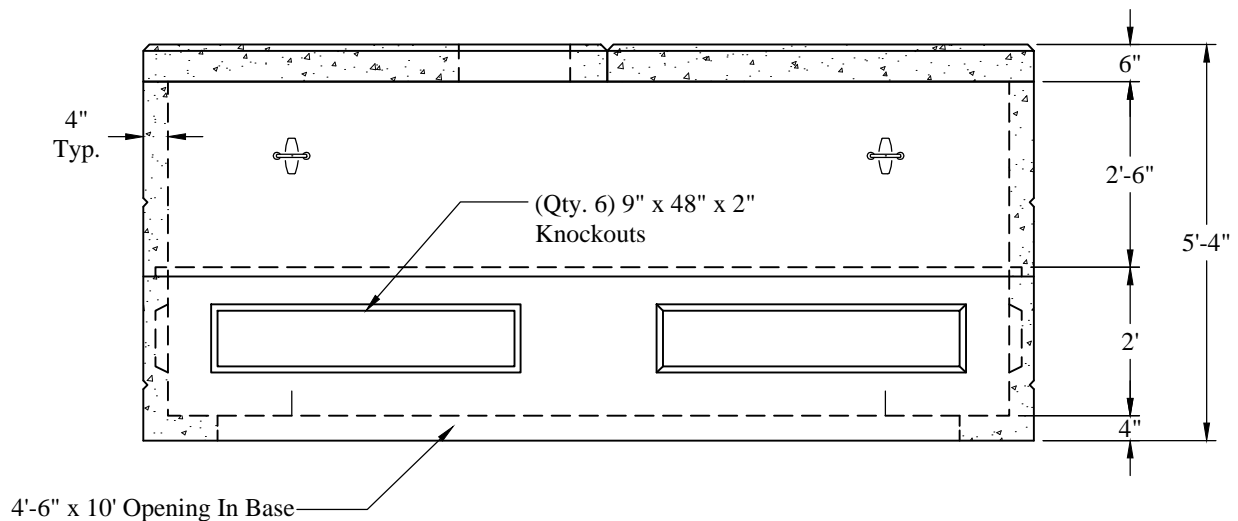
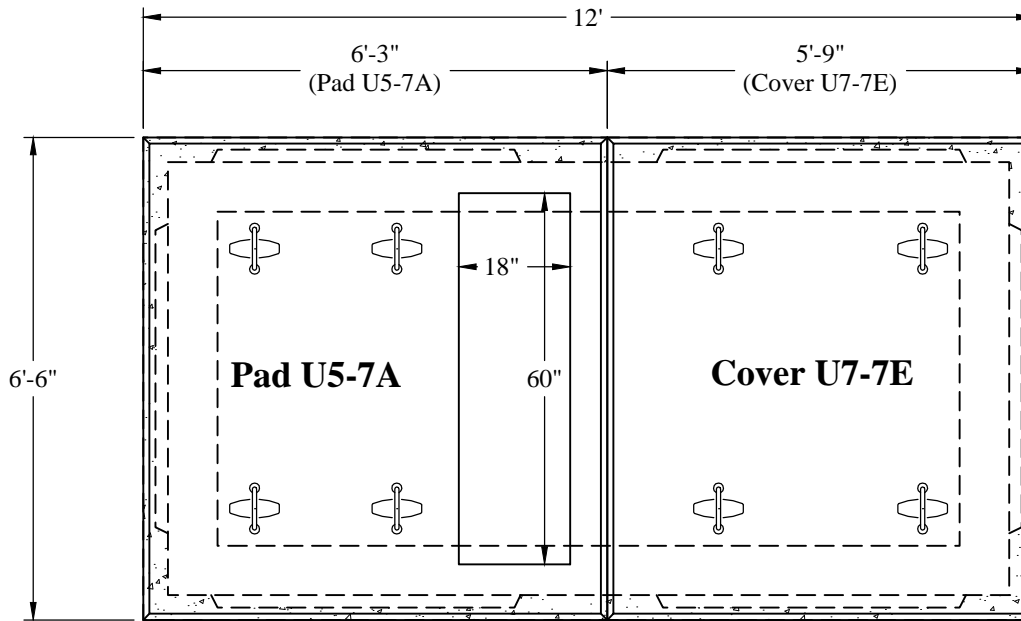


1-800-639-2199

Fax (603) 224-2927



Est Weight:

Pad:	2,400 Lbs.
Cover:	2,800 Lbs
2'-6" Riser:	4,400 Lbs
Base:	4,750 Lbs
Total:	14,350 Lbs

General Notes:

1. Concrete: $f_c = 5,000$ psi @ 28 Days Minimum
2. Reinforcement Steel Conforms to:
ASTM A615 Grade 60
3. Conforms to NHEC Specification
4. Top of Vault Shall be 6" Above Grade
5. Vault is for Non-Traffic Applications

Phoenix
Precast
Products

NH Co-Op
U5-7 Three Phase
Transformer Vault

P/N: NHEC-U5-7T

77 Regional Drive

Concord, NH 03301

Phoenix Precast Products

Phoenix Precast Products