

1-800-639-2199

Fax (603) 224-2927

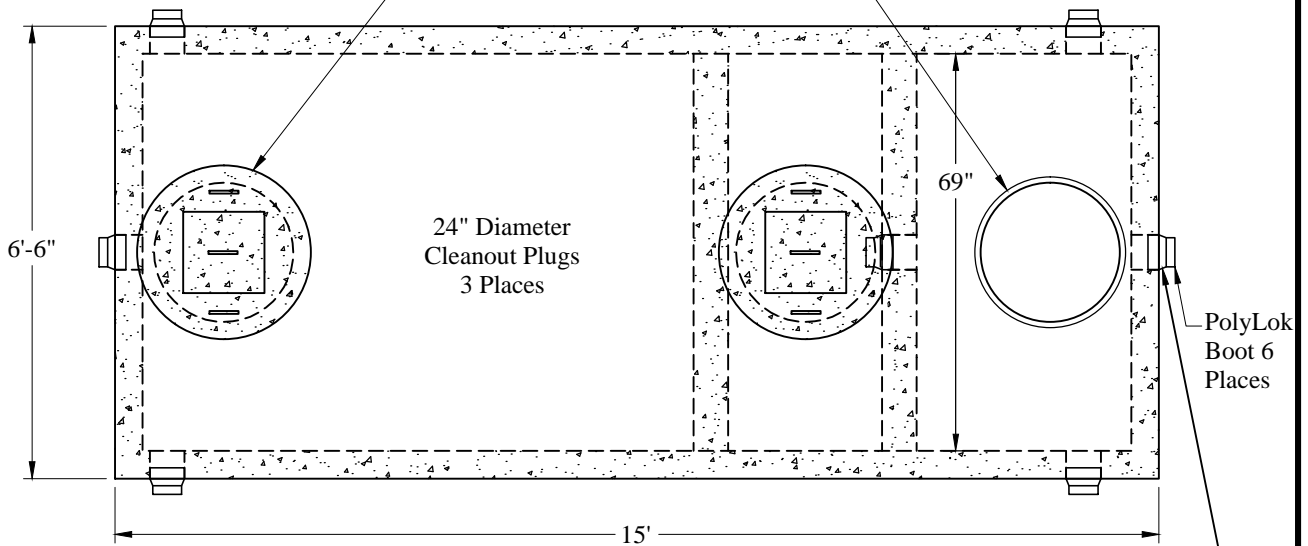
Tanks\Compartment\3 Comp\Med_HD_3_Comp_Tank

Phoenix Precast Products

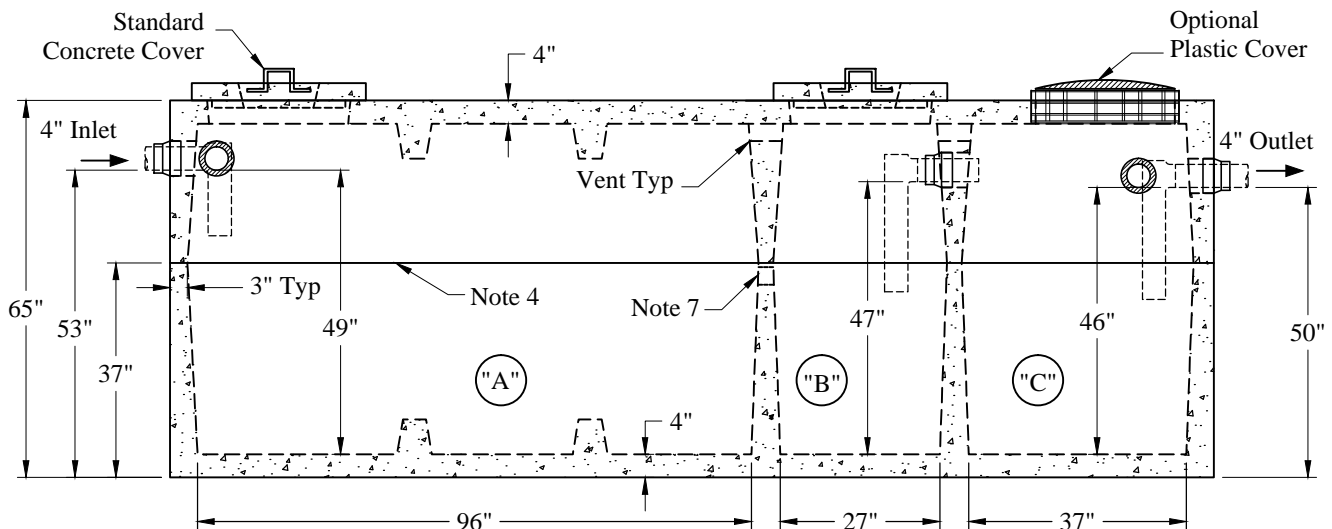
Phoenix Precast Products

Standard Cover Configuration
Is (3) 24" Dia Concrete Covers

Optional Cover Configuration
Is (3) 24" Dia Plastic Risers
Cast In, With Plastic Covers



NOTE: A Pipe Bushing Will Be Required
On All Boots with Pipes Less Than 4"



General Notes

1. Steel Reinforcement Conforms to Latest ASTM Specifications: ASTM-A615 Grade 60 Rebar
2. Concrete: $f_c = 4,000$ psi @ 28 Days Minimum
3. Flexible Sleeves Used On All Pipe Openings
4. Butyl Rubber Joint Sealant Provided
5. Internal PVC Baffles Available
- Inlet: Shall Penetrate at Least 9" Below the Liquid Level, But Not Deeper Than the Outlet Baffle.
- Outlet: Shall Extend Below the Surface of the Liquid Equal to 40% of the Liquid Depth (19").
6. HD Tanks: 3' - 6' Cover Max, Non-Traffic
7. Flow-Through Opening Between Compartments A & B

"A" Liquid Level = 355 Gals/VF (30 Gals/In)

"B" Liquid Level = 105 Gals/VF (9 Gals/In)

"C" Liquid Level = 143 Gals/VF (12 Gals/In)

"A" = 1,391 Gals

"B" = 411 Gals

"C" = 548 Gals

Total = 2,350 Gals

Est Weight:

Upper: 10,270 Lbs

Lower: 12,500 Lbs

Total: 22,770 Lbs

Phoenix
Precast
Products

Medium HD
3 Compartment Tank

P/N: ST-1330/380/500HD

Concord, NH 03301