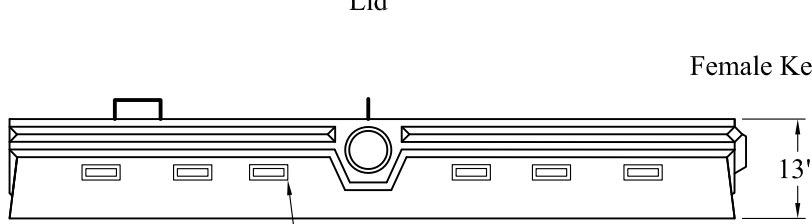
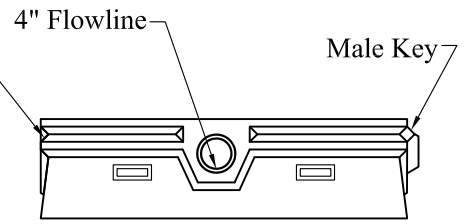


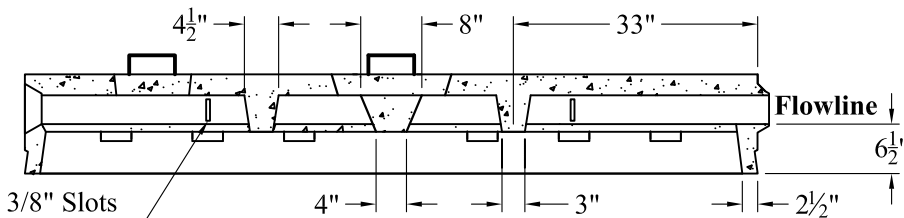
Top View



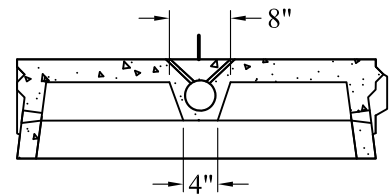
Side View



End View



Side Section



End Section

General Notes

1. Steel Reinforcement Conforms to Latest ASTM Specifications: ASTM-A615 Grade 60 Rebar
2. Concrete: $f_c = 4,000$ psi @ 28 Days Minimum
3. Design Loading: AASHTO- HS20-44
4. Distribution Line Running Length of Chamber
5. Est Weight: 2,140 Lbs

**Phoenix
Precast
Products**

**4Ft x 8Ft x 13In
"L" Flow Diffuser
Leaching Chamber**

P/N: LC-4X8LHD