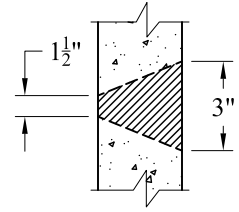
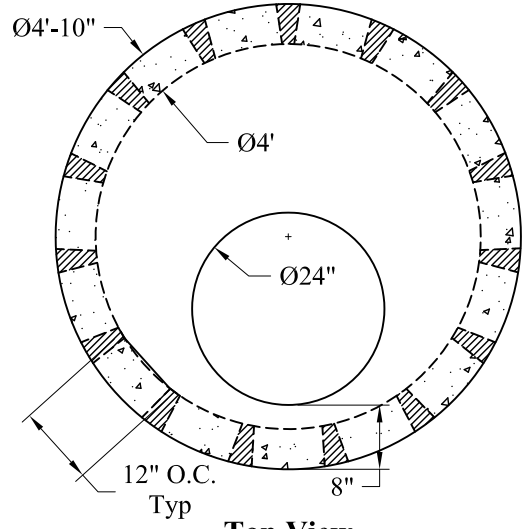


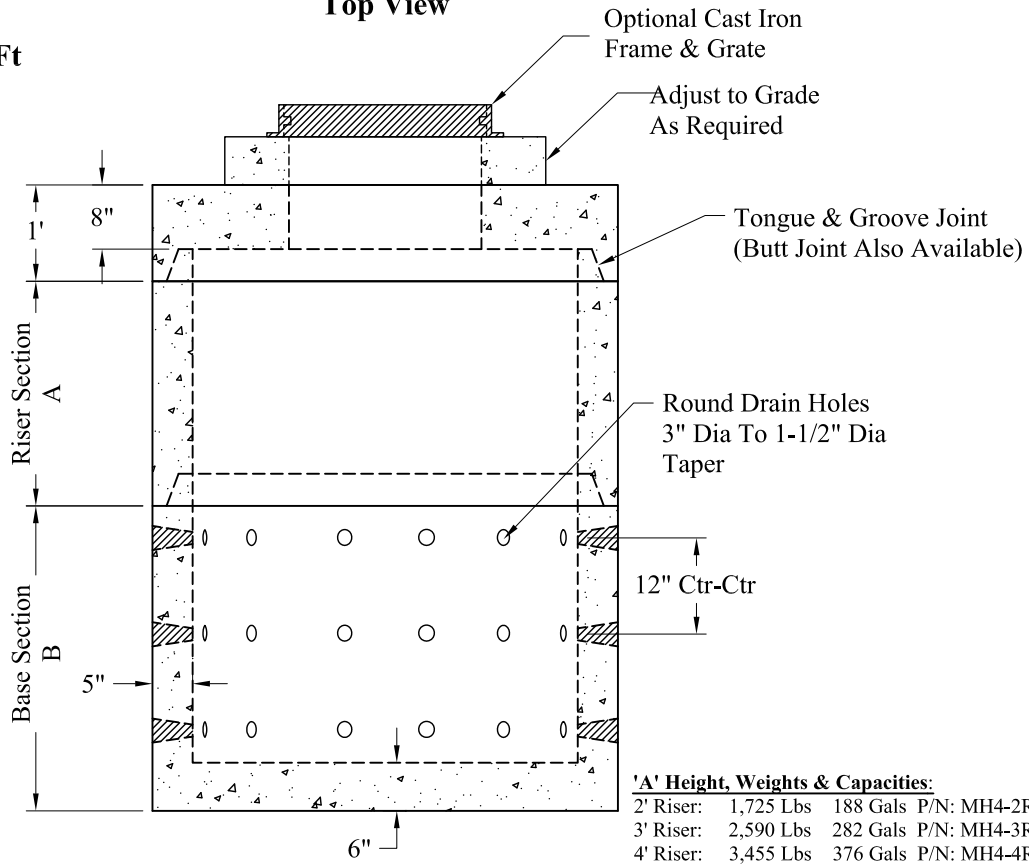
Drywells\Standard\4 Ft Dia\4Ft\_ID\_DW\_with Solid Riser



Detail Of Openings (NTS)

**Volume:**  
**94 Gals Vert/Ft**

**Top View**



**Section View**

**'A' Height, Weights & Capacities:**

2' Riser:	1,725 Lbs	188 Gals	P/N: MH4-2R
3' Riser:	2,590 Lbs	282 Gals	P/N: MH4-3R
4' Riser:	3,455 Lbs	376 Gals	P/N: MH4-4R
5' Riser:	4,320 Lbs	470 Gals	P/N: MH4-5R
Top Slab:	1,970 Lbs	N/A	P/N: MH4-TS24OFF

**'B' Height, Weights & Capacities:**

2' Base:	2,800 Lbs	141 Gals	P/N: MH4-2SDW
3' Base:	3,700 Lbs	235 Gals	P/N: MH4-3SDW
4' Base:	4,520 Lbs	329 Gals	P/N: MH4-4SDW
5' Base:	5,380 Lbs	423 Gals	P/N: MH4-5SDW

**General Notes**

- 1.) Steel Reinforcement Conforms To Latest ASTM Specifications:  
ASTM A-615 Grade 60 Rebar  
ASTM A-185 Welded Wire Fabric 0.12 Square Inch / Lineal Foot And 0.12 Square Inch (Both Ways) Base Bottom
- 2.) Concrete:  $f_c = 4,000$  psi @ 28 Days Minimum
- 3.) Design Loading: AASHTO-HS20-44
- 4.) Hole Coring Available for Larger Diameter Pipes

<p><b>Phoenix Precast Products</b></p>	<p><b>4' I.D. Dry Well With Solid Riser</b></p>
--	---

**Phoenix Precast Products**

**Phoenix Precast Products**