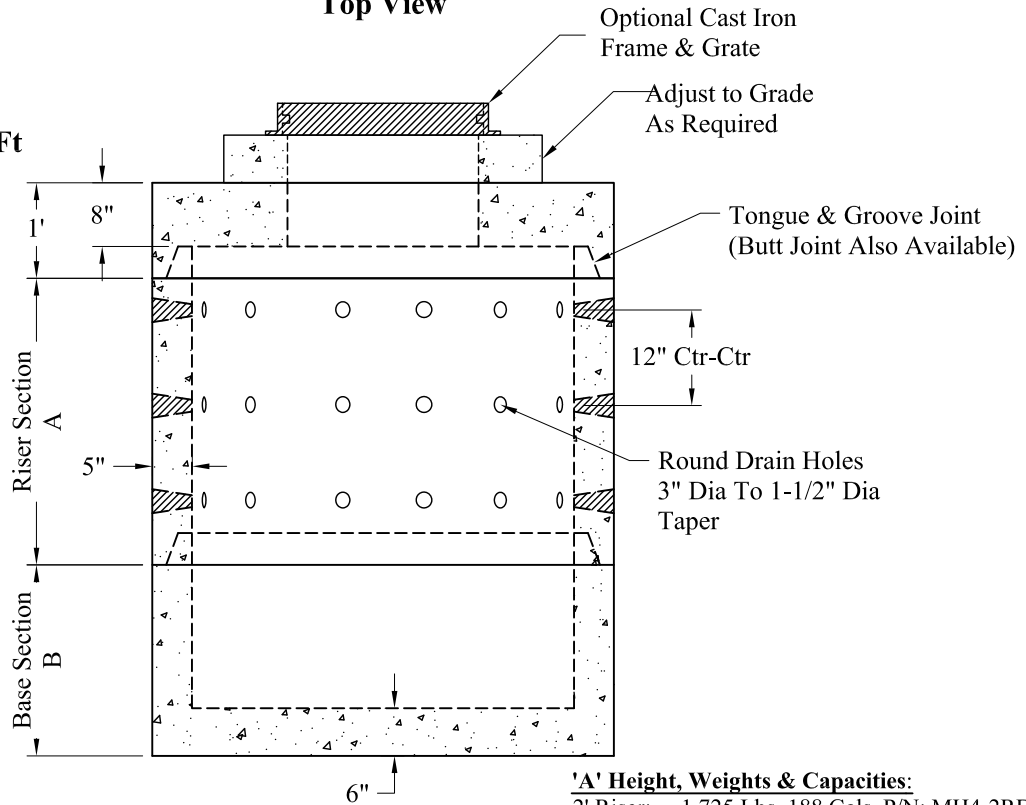


Detail Of Openings
(NTS)

Volume:
94 Gals Vert/Ft



Section View

'A' Height, Weights & Capacities:

2' Riser:	1,725 Lbs	188 Gals	P/N: MH4-2RDW
3' Riser:	2,590 Lbs	282 Gals	P/N: MH4-3RDW
4' Riser:	3,455 Lbs	376 Gals	P/N: MH4-4RDW
5' Riser:	4,320 Lbs	470 Gals	P/N: MH4-5RDW
Top Slab:	1,970 Lbs	N/A	P/N: MH4-TS24OFF

'B' Height, Weights & Capacities:

2' Base:	2,800 Lbs	141 Gals	P/N: MH4-2S
3' Base:	3,700 Lbs	235 Gals	P/N: MH4-3S
4' Base:	4,520 Lbs	329 Gals	P/N: MH4-4S
5' Base:	5,380 Lbs	423 Gals	P/N: MH4-5S

General Notes

- 1.) Steel Reinforcement Conforms To Latest ASTM Specifications:
ASTM A-615 Grade 60 Rebar
ASTM A-185 Welded Wire Fabric 0.12 Square Inch / Lineal Foot And 0.12 Square Inch (Both Ways) Base Bottom
- 2.) Concrete: $f_c = 4,000$ psi @ 28 Days Minimum
- 3.) Design Loading: AASHTO-HS20-44
- 4.) Hole Coring Available for Larger Diameter Pipes

Phoenix
Precast
Products

4' I.D. Dry Well
With Solid Sump