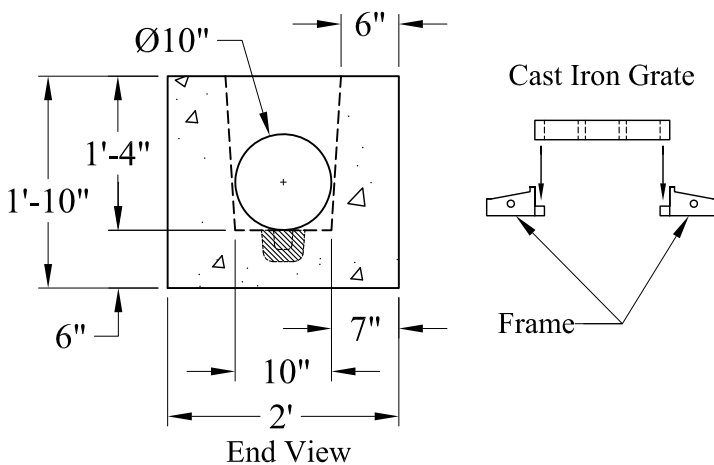
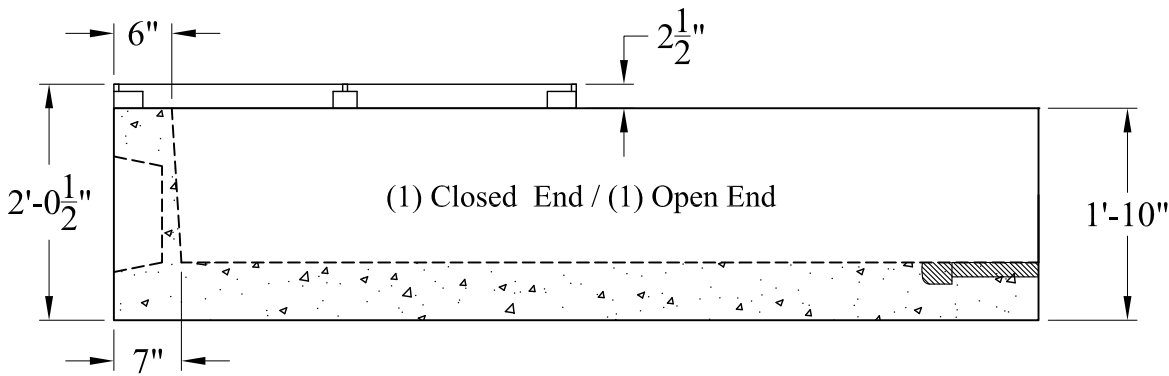
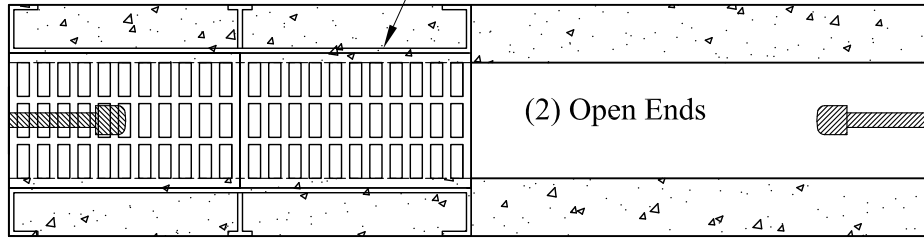


Partial Frame & Grate Shown



Style	P/N	Est. Weight
4' Open Ends	TD-4O	1,500 Lbs
4' Closed Ends	TD-4C	1,500 Lbs
4' Open End / Closed End	TD-4OC	1,500 Lbs
8' Open Ends	TD-8O	3,000 Lbs
8' Closed Ends	TD-8C	3,000 Lbs
8' Open End / Closed End	TD-8OC	3,000 Lbs

General Notes

1. Reinforcing Steel ASTM A615 Grade 60
2. Concrete: $f_c = 5,000$ psi @ 28 Days Min.
3. Design Loading: AASHTO-HS20-44
4. Available In 4' and 8' Sections

**Phoenix
Precast
Products**

**2' Deep
Heavy Duty
Trench Drain**

P/N: See Above