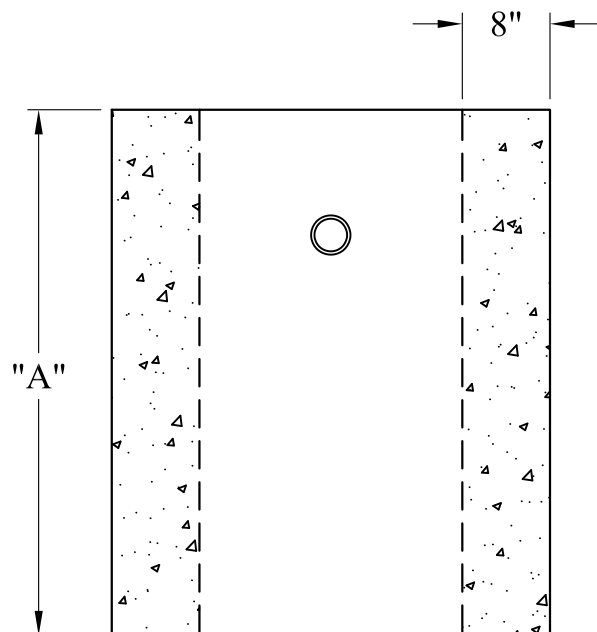


Dim "A"	P/N	Est. Weight:
12"	DIR-24x12	825 Lbs
18"	DIR-24x18	1,235 Lbs
24"	DIR-24x24	1,645 Lbs
30"	DIR-24x30	2,055 Lbs
36"	DIR-24x36	2,470 Lbs
42"	DIR-24x42	2,880 Lbs
48"	DIR-24x48	3,290 Lbs
54"	DIR-24x54	3,700 Lbs
60"	DIR-24x60	4,115 Lbs



General Notes

- 1.) Concrete: $f_c = 4,000$ psi @ 28 Days Minimum
- 2.) Design Loading: AASHTO-HS20-44

Phoenix
Precast
Products

**2' Diameter
Drop Inlet Riser**

P/N: See Above