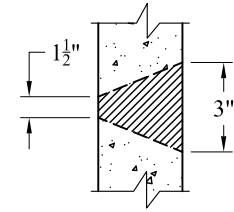
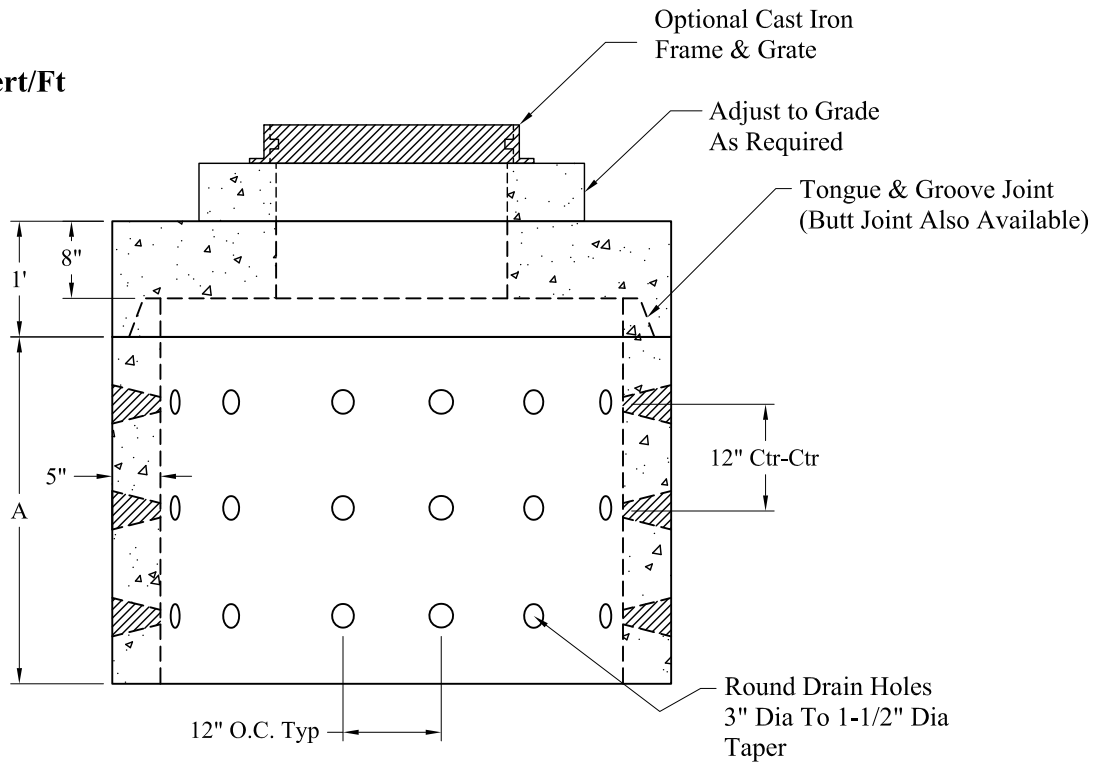


Top View



Detail Of Openings (NTS)

Volume:
94 Gals Vert/Ft



Section View

'A' Height, Weights & Capacities:

2' Riser:	1,725 Lbs	188 Gals	P/N: MH4-2RDWBB
3' Riser:	2,590 Lbs	282 Gals	P/N: MH4-3RDWBB
4' Riser:	3,455 Lbs	376 Gals	P/N: MH4-4RDWBB
5' Riser:	4,320 Lbs	470 Gals	P/N: MH4-5RDWBB
Top Slab:	1,970 Lbs	N/A	P/N: MH4-TS24OFF

General Notes

- 1.) Steel Reinforcement Conforms To Latest ASTM Specifications: ASTM A-185 Welded Wire Fabric
ASTM A-615 Grade 60 Black Deformed Bars
- 2.) Concrete: $f_c = 4,000$ psi @ 28 Days Minimum
- 3.) Design Loading: AASHTO-HS20-44
- 4.) Hole Coring Available for Larger Diameter Pipes

Phoenix
Precast
Products

4' I.D. Dry Well
(Open Bottom)