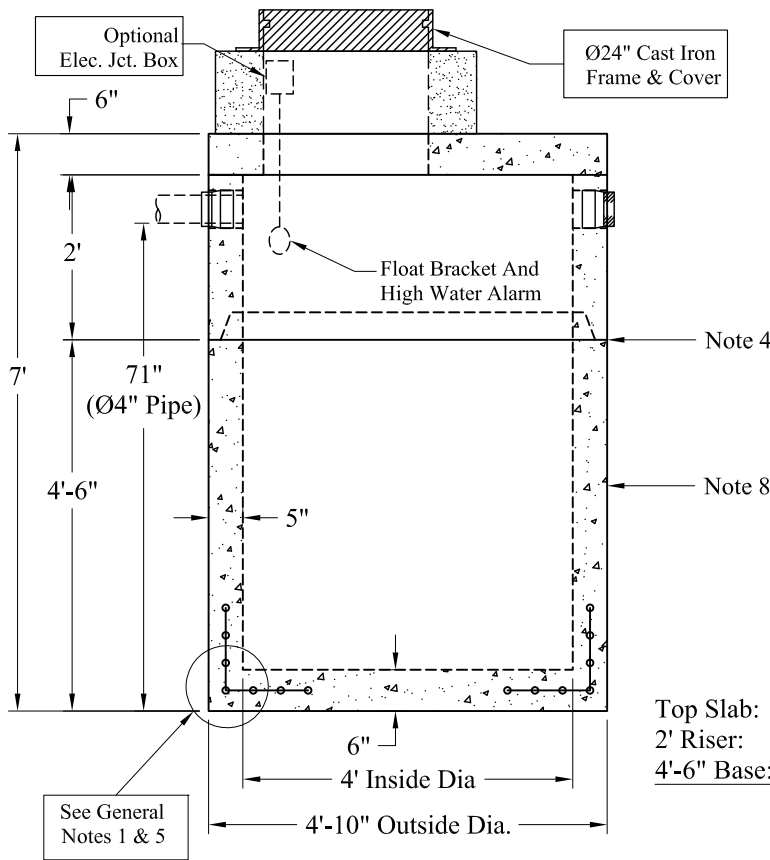
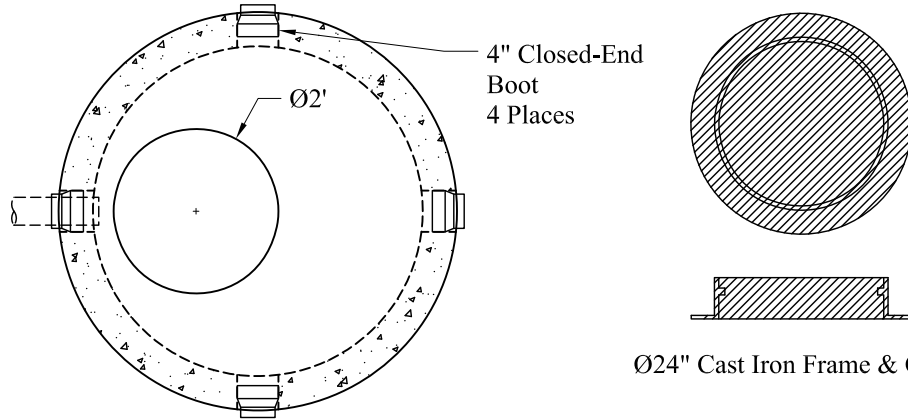


Alarms and Related Accessories are Optional.  
Junction Box and Electrical Connections  
Installed by Others



Est. Weight	
Top Slab: P/N: MH4-TS24OFF	1,150 Lbs
2' Riser: P/N: MH4-2RB	1,760 Lbs
4'-6" Base: P/N: MH4-4.5S	4,960 Lbs
Total: 7,870 Lbs	

**General Notes**

- 1.) Reinforcement Steel Conforms To Latest ASTM A 185 Specifications: 0.12 Sq. In. / Lineal Ft. And 0.12 Sq./In. (Both Ways) Base Bottom
- 2.) Concrete:  $f_c = 4,000$  psi @ 28 Days Minimum
- 3.) Manhole Design: Conforms To The Latest ASTM C478 Specifications For "Precast Reinforced Concrete Manhole Sections". Design Loading: AASHTO-HS20-44
- 4.) Butyl Rubber Joint Sealant Provided
- 5.) One Pour Monolithic Base Section
- 6.) Liquid Capacity: 94 Gallons/VF (8 Gallons/Inch)
- 7.) Flexible Boots Provided
- 8.) Exterior Coating Available

Elevations:	
Rim:	
Invert In:	
Alarm On:	
Inside Floor:	

**Phoenix  
Precast  
Products**

**4' Diameter  
HS-20 500 Gallon  
Holding Tank**

P/N: See Above