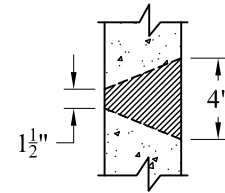
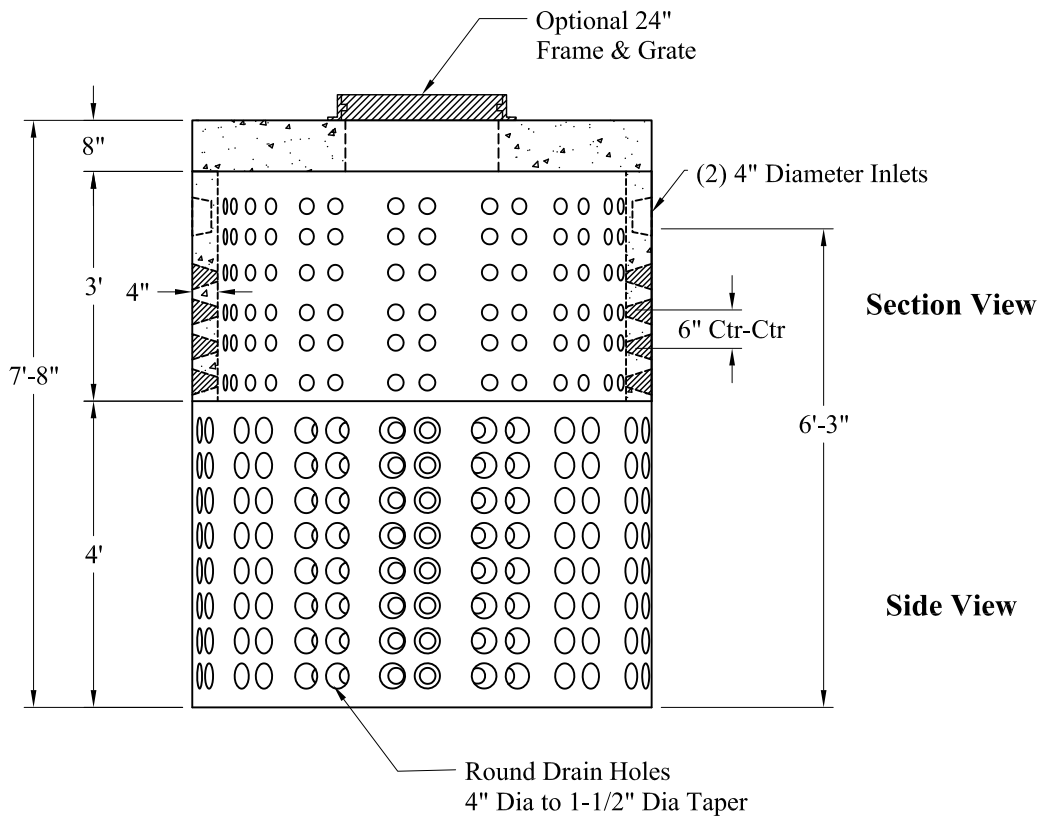


**Volume:**  
167 Gals/Vert Ft

**Top View**



Detail Of Openings  
(NTS)



**Section View**

**Side View**

**Est Weight:**

Top Slab:	P/N: MH5-TS24CLBT8	2,490 Lbs
3' Riser:	P/N: DWR-3	2,440 Lbs
4' Riser:	P/N: DWR-4	3,300 Lbs
<b>Total:</b>		<b>8,230 Lbs</b>

**General Notes**

- 1.) Steel Reinforcement Conforms To Latest ASTM Specifications:  
ASTM A-615 Grade 60 Rebar  
ASTM A-185 Welded Wire Fabric
- 2.) Concrete:  $f_c = 4,000$  psi @ 28 Days Minimum
- 3.) Design Loading: AASHTO-HS20-44
- 4.) Optional Cast Iron Covers or Concrete Covers Available
- 5.) Hole Coring Available for Larger Diameter Pipes
- 6.) All Sections Are Butt Joint

**Phoenix  
Precast  
Products**

**6' O.D. Dry Well  
1,200 Gallons**

P/N: See Above