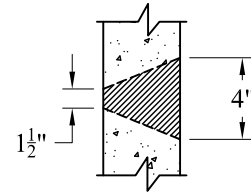
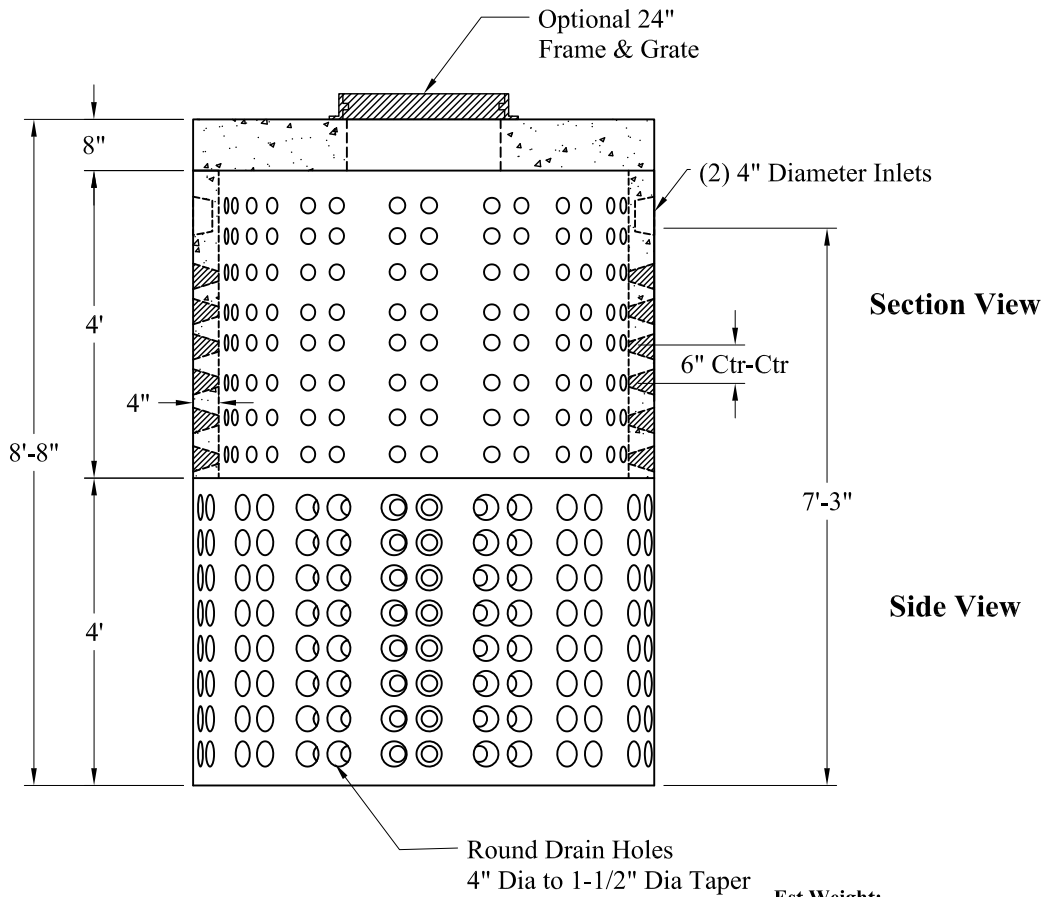


**Volume:**  
167 Gals/Vert Ft

**Top View**



**Detail Of Openings**  
(NTS)



**Section View**

**Side View**

Round Drain Holes  
4" Dia to 1-1/2" Dia Taper

**Est Weight:**

Top Slab: P/N: MH5-TS24CLBB8	2,490 Lbs
Risers: P/N: DWR-4	6,600 Lbs
<b>Total:</b>	<b>9,090 Lbs</b>

**General Notes**

- 1.) Steel Reinforcement Conforms To Latest ASTM Specifications:  
ASTM A-615 Grade 60 Rebar  
ASTM A-185 Welded Wire Fabric
- 2.) Concrete:  $f_c = 4,000$  psi @ 28 Days Minimum
- 3.) Design Loading: AASHTO-HS20-44
- 4.) Optional Cast Iron Covers or Concrete Covers Available
- 5.) Hole Coring Available for Larger Diameter Pipes
- 6.) All Sections Are Butt Joint

**Phoenix  
Precast  
Products**

**6' O.D. Dry Well  
1,300 Gallons**

P/N: See Above

**Concord, NH 03301**