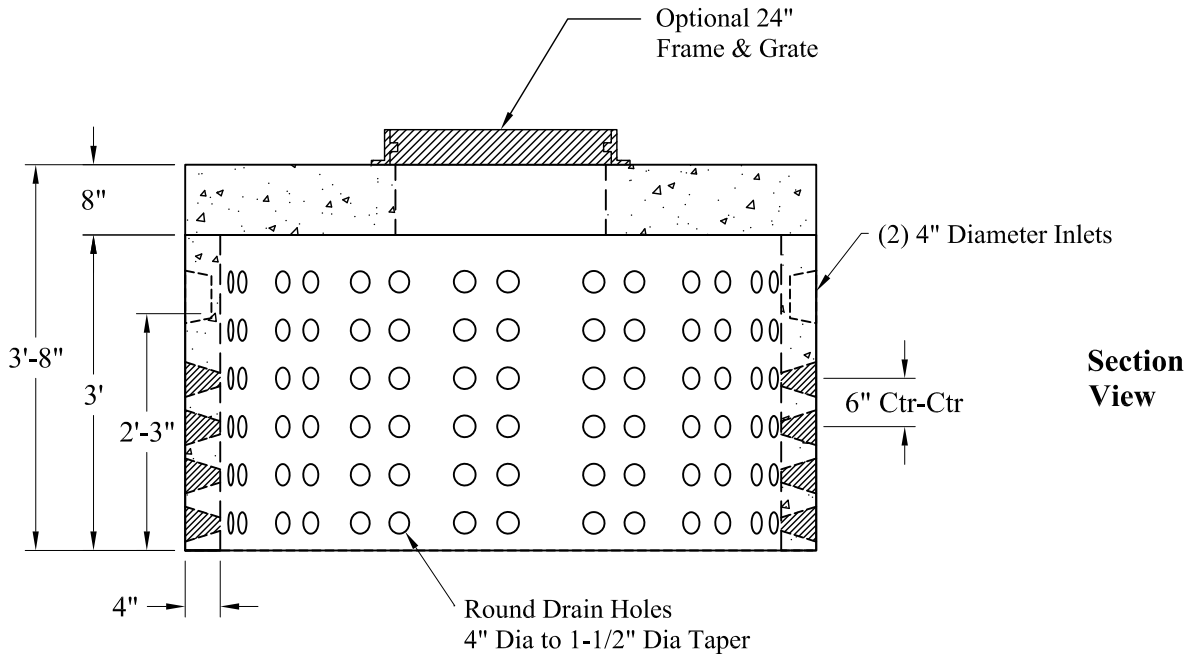


Detail Of Openings  
(NTS)

**Volume:**  
167 Gals/Vert Ft

**Top View**



**Section View**

**Est. Weight:**

Top Slab: P/N: MH5-TS24CLBT8	2,490 Lbs
Riser: P/N: DWR-3	2,440 Lbs
<b>Total:</b>	<b>4,930 Lbs</b>

**General Notes**

- 1.) Steel Reinforcement Conforms To Latest ASTM Specifications:  
ASTM A-615 Grade 60 Rebar  
ASTM A-185 Welded Wire Fabric
- 2.) Concrete:  $f_c = 4,000$  psi @ 28 Days Minimum
- 3.) Design Loading: AASHTO-HS20-44
- 4.) Optional Cast Iron Covers or Concrete Covers Available
- 5.) Hole Coring Available for Larger Diameter Pipes
- 6.) All Sections Are Butt Joint

**Phoenix  
Precast  
Products**

**6' O.D. Dry Well  
500 Gallon**

P/N: See Above

**Concord, NH 03301**