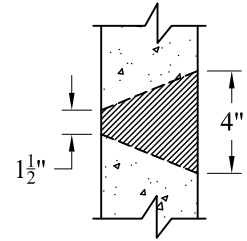
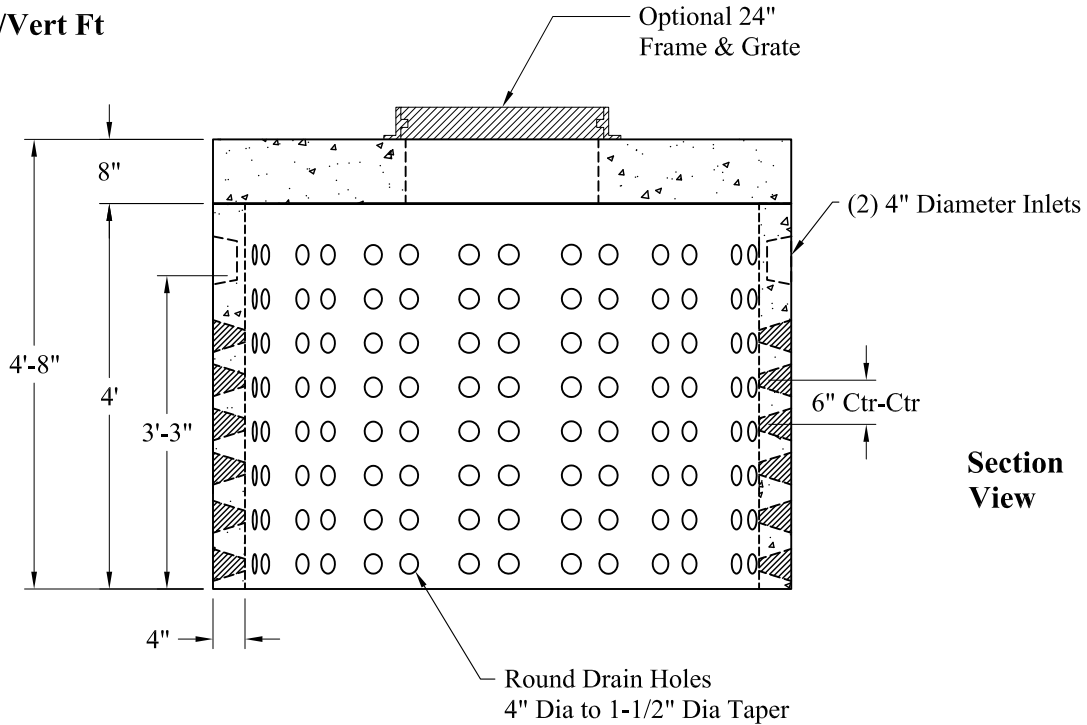


Top View



Detail Of Openings (NTS)

**Volume:**  
167 Gals/Vert Ft



Section View

**Est Weight:**

Top Slab:	P/N: MH5-TS24CLBT8	2,490 Lbs
Riser:	P/N: DWR-4	3,300 Lbs
Total:		5,790 Lbs

**General Notes**

- 1.) Steel Reinforcement Conforms To Latest ASTM Specifications:  
ASTM A-615 Grade 60 Rebar  
ASTM A-185 Welded Wire Fabric
- 2.) Concrete:  $f_c = 4,000$  psi @ 28 Days Minimum
- 3.) Design Loading: AASHTO-HS20-44
- 4.) Optional Cast Iron Covers or Concrete Covers Available
- 5.) Hole Coring Available for Larger Diameter Pipes
- 6.) All Sections Are Butt Joint

Phoenix  
Precast  
Products

6' O.D. Dry Well  
600 Gallon

P/N: See Above