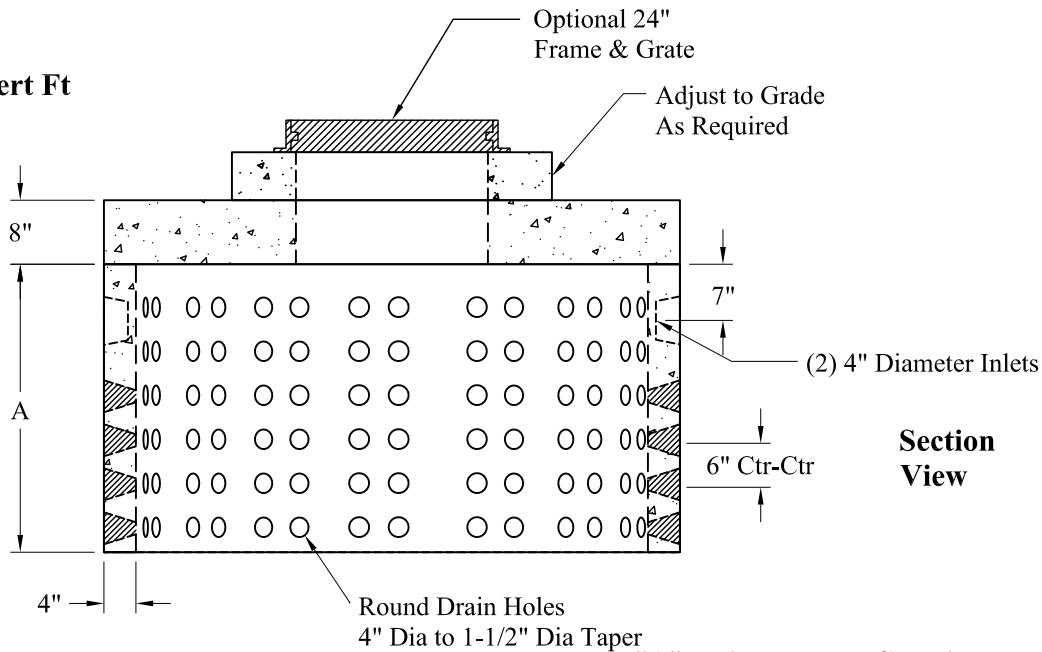


Detail Of Openings
(NTS)

Top View

Volume:
167 Gals/Vert Ft



Section
View

"A" Height	Capacity	Est Weight
2' P/N: DWR-2	334 Gallons	1,650 Lbs
3' P/N: DWR-3	501 Gallons	2,440 Lbs
4' P/N: DWR-4	668 Gallons	3,300 Lbs
5' P/N: N/A	835 Gallons	4,090 Lbs
6' P/N: N/A	1,002 Gallons	4,880 Lbs
7' P/N: N/A	1,169 Gallons	5,740 Lbs
8' P/N: N/A	1,336 Gallons	6,600 Lbs

Top Slab P/N: MH5-TS24CLBB8 2,640 Lbs

General Notes

- 1.) Steel Reinforcement Conforms To Latest ASTM Specifications:
ASTM A-615 Grade 60 Rebar
ASTM A-185 Welded Wire Fabric
- 2.) Concrete: $f_c = 4,000$ psi @ 28 Days Minimum
- 3.) Design Loading: AASHTO-HS20-44
- 4.) Optional Cast Iron Covers or Concrete Covers Available
- 5.) Hole Coring Available for Larger Diameter Pipes
- 6.) All Sections Are Butt Joint

**Phoenix
Precast
Products**

6' O.D. Dry Well