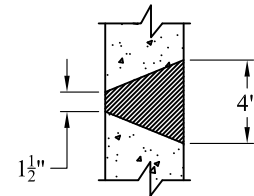
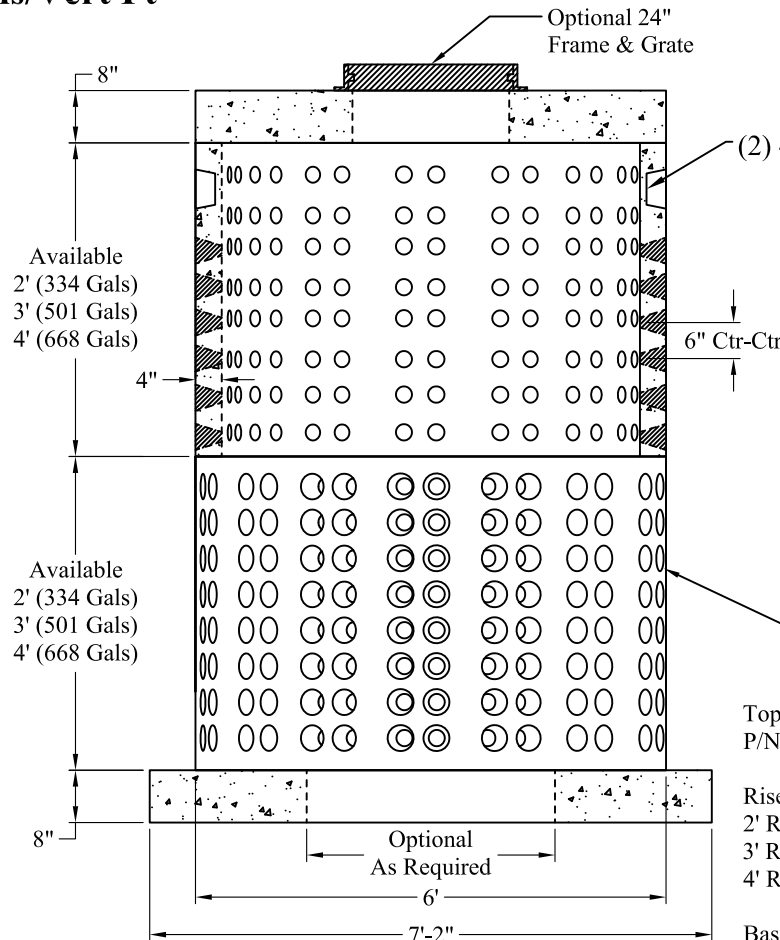


**Top View**



**Detail Of Openings (NTS)**

**Volume:  
167 Gals/Vert Ft**



**Section View**

**Side View**

| Top Slab                   |  | Est Weights |
|----------------------------|--|-------------|
| P/N: MH5-TS24CLBB8         |  | 2,640 Lbs   |
| Risers                     |  |             |
| 2' Riser P/N: DWR-2        |  | 1,650 Lbs   |
| 3' Riser P/N: DWR-3        |  | 2,440 Lbs   |
| 4' Riser P/N: DWR-4        |  | 3,300 Lbs   |
| Base Slabs                 |  |             |
| 24" Dia P/N: MH6-TS24CLBB8 |  | 3,680 Lbs   |
| 30" Dia P/N: MH6-TS30CLBB8 |  | 3,480 Lbs   |
| 36" Dia P/N: MH6-TS36CLBB8 |  | 3,280 Lbs   |
| 42" Dia P/N: MH6-TS42CLBB8 |  | 2,920 Lbs   |
| 48" Dia P/N: MH6-TS48CLBB8 |  | 2,760 Lbs   |

**General Notes**

- 1.) Steel Reinforcement Conforms To Latest ASTM Specifications:  
ASTM A-615 Grade 60 Rebar  
ASTM A-185 Welded Wire Fabric
- 2.) Concrete:  $f_c = 4,000$  psi @ 28 Days Minimum
- 3.) Design Loading: AASHTO-HS20-44
- 4.) Optional Cast Iron Covers or Concrete Covers Available
- 5.) Hole Coring Available for Larger Diameter Pipes
- 6.) All Sections Are Butt Joint
- 7.) Solid Base Or With An Opening, As Required

**Phoenix  
Precast  
Products**

**Deep  
6' O.D. Dry Well  
With Base Slab**

**Concord, NH 03301**