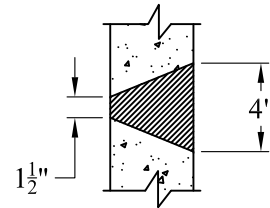
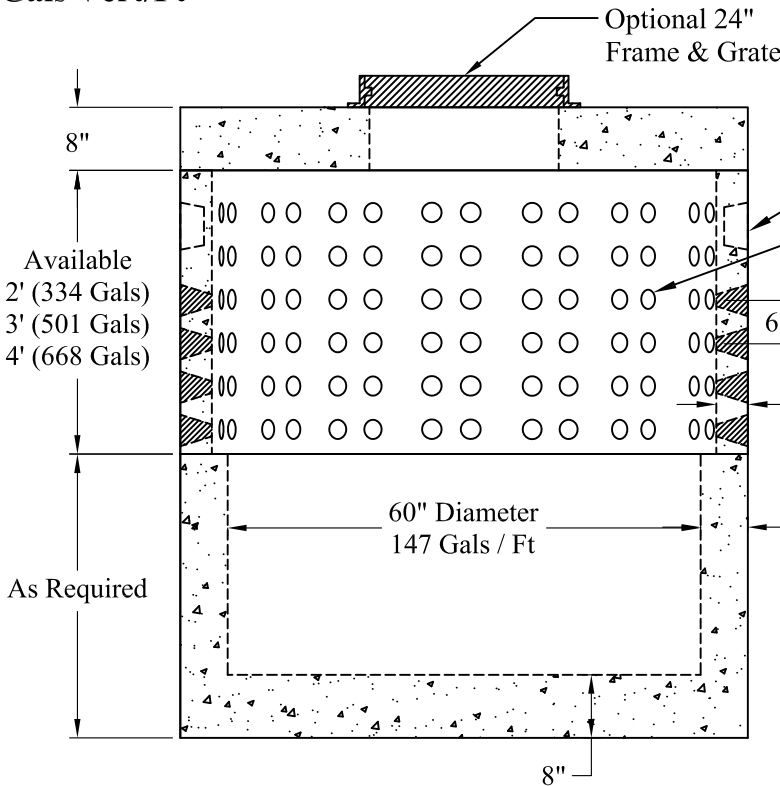


Top View



Detail Of Openings (NTS)

**Volume:
167 Gals Vert/Ft**



(2) 4" Diameter Inlets
Round Drain Holes
4" Dia To 1-1/2" Dia Taper

Section View

Top Slab P/N: MH5-TS24CLBB8	Est. Weights 2,490 Lbs
Risers	
2' Risers P/N: DWR-2	1,650 Lbs
3' Risers P/N: DWR-3	2,440 Lbs
4' Risers P/N: DWR-4	3,300 Lbs
Sumps	
2' Sump P/N: MH5-2SBT	4,680 Lbs
2'-6" Sump P/N: MH5-2.5SBT	5,320 Lbs
3' Sump P/N: MH5-3SBT	5,960 Lbs

Side View

General Notes

- 1.) Steel Reinforcement Conforms To Latest ASTM Specifications:
ASTM A-615 Grade 60 Rebar
ASTM A-185 Welded Wire Fabric
- 2.) Concrete: $f_c = 4,000$ psi @ 28 Days Minimum
- 3.) Design Loading: AASHTO-HS20-44
- 4.) Optional Cast Iron Covers or Concrete Covers Available
- 5.) Hole Coring Available for Larger Diameter Pipes
- 6.) All Sections Are Butt Joint

**Phoenix
Precast
Products**

**6' O.D. Dry Well
With Solid Sump**