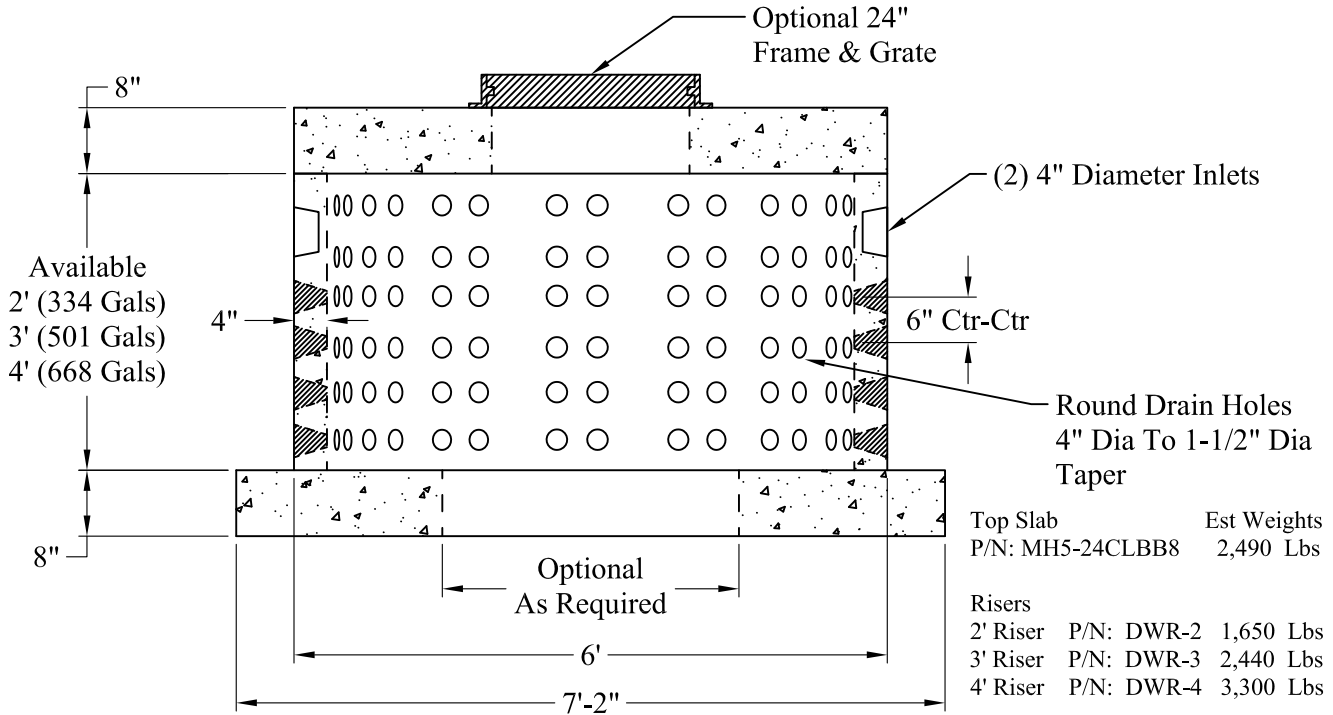


Detail Of Openings  
(NTS)

**Volume:  
167 Gals Vert/Ft**



**General Notes**

- 1.) Steel Reinforcement Conforms To Latest ASTM Specifications:  
ASTM A-615 Grade 60 Rebar  
ASTM A-185 Welded Wire Fabric
- 2.) Concrete:  $f_c = 4,000$  psi @ 28 Days Minimum
- 3.) Design Loading: AASHTO-HS20-44
- 4.) Optional Cast Iron Covers or Concrete Covers Available
- 5.) Hole Coring Available for Larger Diameter Pipes
- 6.) All Sections Are Butt Joint
- 7.) Solid Base Or With An Opening, As Required

**Phoenix  
Precast  
Products**

**Shallow  
6' O.D. Dry Well  
With Base Slab**