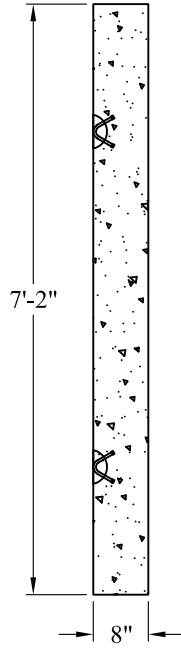
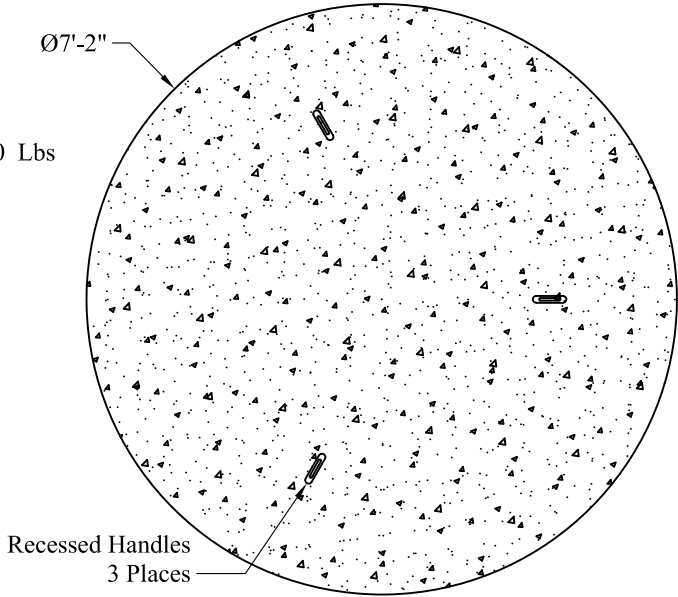
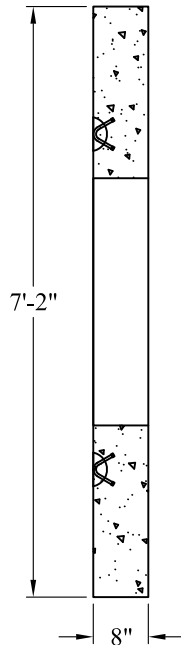
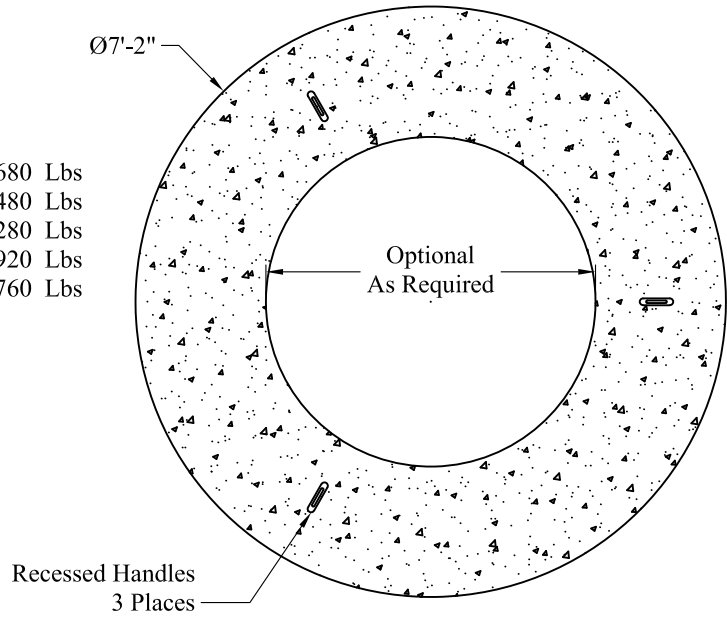


Base Slab
P/N: MH6-TSSOLIDBB8 4,000 Lbs



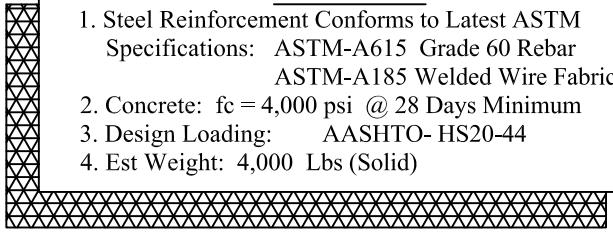
Available As Solid Or With Central Hole,
Sized As Required

Base Slab
 P/N: MH6-TS24CLBB8 3,680 Lbs
 P/N: MH6-TS30CLBB8 3,480 Lbs
 P/N: MH6-TS36CLBB8 3,280 Lbs
 P/N: MH6-TS42CLBB8 2,920 Lbs
 P/N: MH6-TS48CLBB8 2,760 Lbs



General Notes

1. Steel Reinforcement Conforms to Latest ASTM Specifications: ASTM-A615 Grade 60 Rebar
ASTM-A185 Welded Wire Fabric
2. Concrete: $f_c = 4,000$ psi @ 28 Days Minimum
3. Design Loading: AASHTO- HS20-44
4. Est Weight: 4,000 Lbs (Solid)



Phoenix
Precast
Products

6' O.D. Dry Well
Base Slab Options